

Template, Rim Device 100 & R100 Series x 2000 & Y2000 Trim Aluminum Door

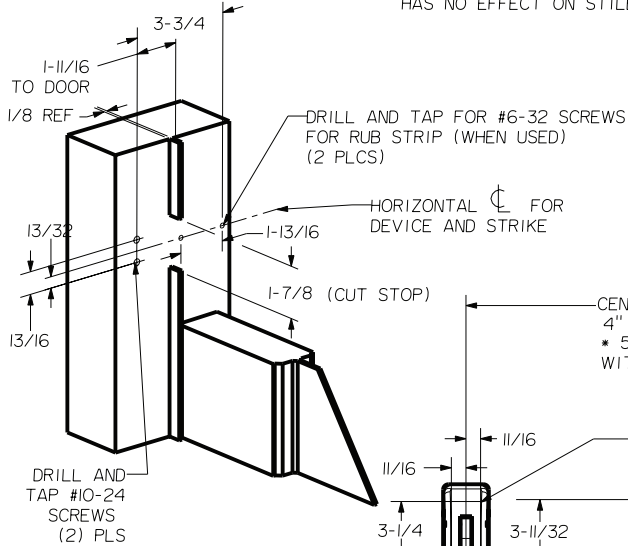
Trim Series: 2000
 Device Series: 100, R100
 Strike: S988



For online instructions, assistance or warranty information:
 Call 1-800-392-5209 or visit <https://dhwsupport.dormakaba.com/hc/en-us>

SEX BOLT MACHINING

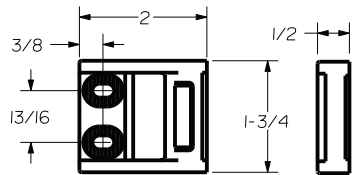
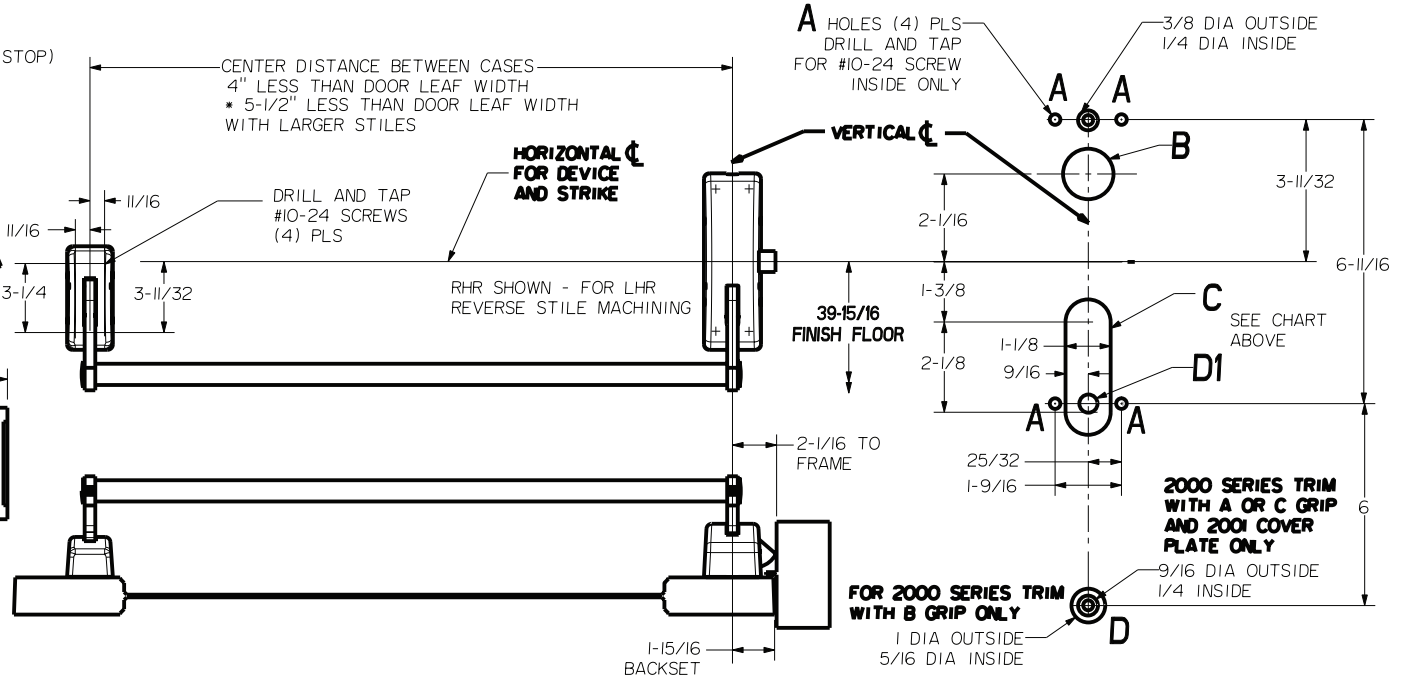
DRILL 1/4 DIA. INSIDE
 DRILL 3/8 DIA. OUTSIDE



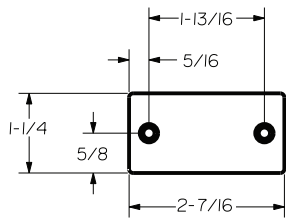
NOTE:
 "LETTER" AT END OF TRIM MODEL NO. DESIGNATES GRIP STYLE. EXCEPT AS NOTED, GRIP STYLE HAS NO EFFECT ON STILE MACHINING.

DEVICES	TRIMS	HOLE B 1-3/8 DIA. THRU DOOR	SLOT C THRU DOOR	D1
101, R101	2001	NO	NO	3/8 DIA OUTSIDE 1/4 DIA INSIDE
102, R102	2002			
103, R103	2003			
105, R105	Y2005	YES	YES	NO
15, R15	Y2015	NO		

LOCK STILE MACHINING



ROLLER STRIKE S988 (STANDARD)



RUB STRIP S454 (STANDARD)

ALUMINUM DOOR AND FRAME WITH BLADE OR APPLIED STOP		
MIN. STILES	DEVICE SIZE	DOOR WIDTH
3-1/2"	3'-0"	2'-6" TO 2'-10"
	4'-0"	3'-0" TO 3'-10"
4-3/4" OR FLUSH DOOR	3'-0"	2'-7" TO 3'-0"
	4'-0"	3'-1" TO 4'-0"