

**Surface Vertical Rod Device 200 & FL200 Series x 2000
& Y2000 Trim Hollow Metal Door
(LBR Requires Fire Bolt Template)**

Trim Series: 2000

Device Series: 200, FL200, 200LBR, FL200LBR

Strike: S300, S301, S460



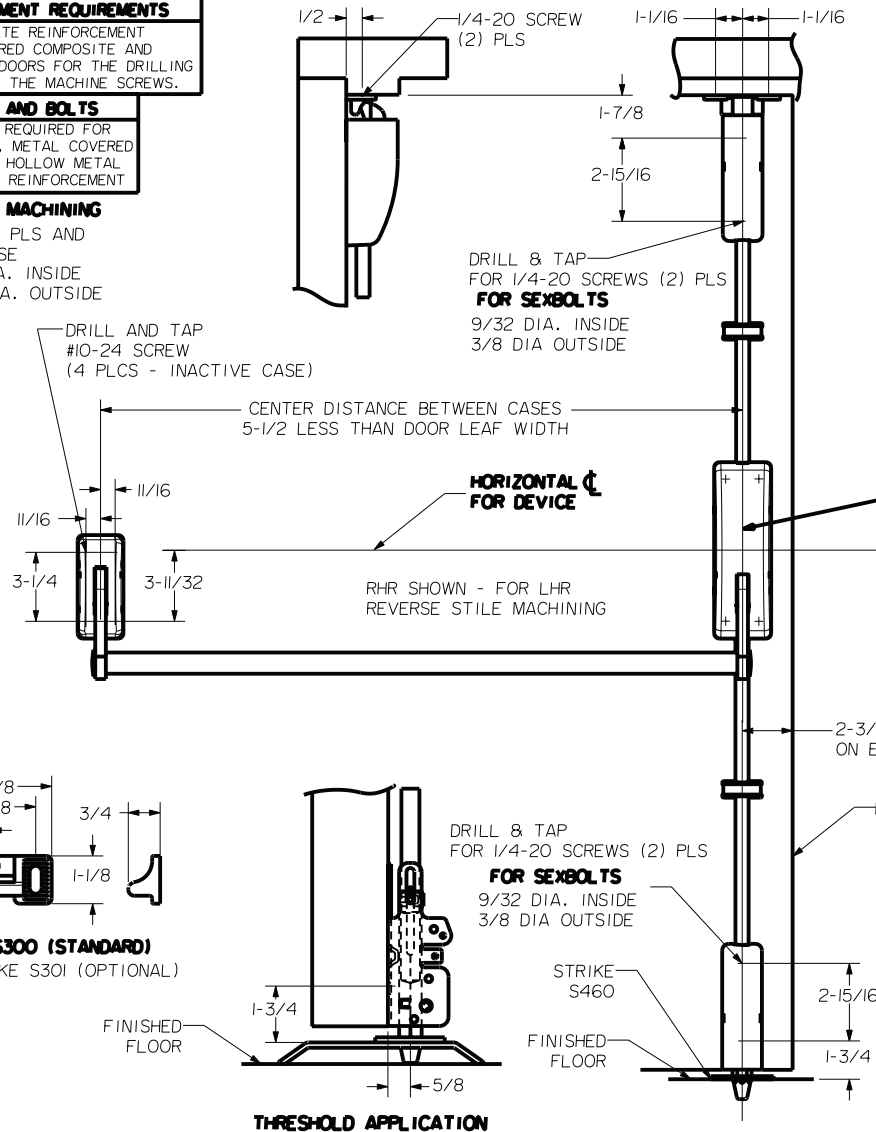
For online instructions, assistance or warranty information:

Call 1-800-392-5209 or visit <https://dhwsupport.dormakaba.com/hc/en-us>

REINFORCEMENT REQUIREMENTS
PROVIDE ADEQUATE REINFORCEMENT TO METAL COVERED COMPOSITE AND HOLLOW METAL DOORS FOR THE DRILLING AND TAPPING OF THE MACHINE SCREWS.

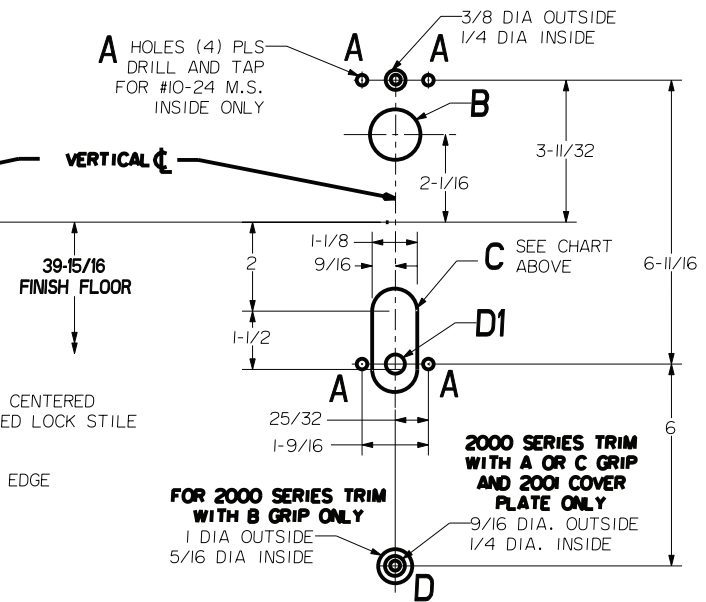
SEX NUTS AND BOLTS
SEX BOLTS ARE REQUIRED FOR PLASTIC, WOOD, METAL COVERED COMPOSITE AND HOLLOW METAL DOORS WITHOUT REINFORCEMENT.

SEX BOLT MACHINING
HOLE "A" (4) PLS AND INACTIVE CASE
DRILL 1/4 DIA. INSIDE
DRILL 3/8 DIA. OUTSIDE



| DEVICES | TRIMS | HOLE B 1-3/8 DIA. THRU DOOR | SLOT C THRU DOOR | D1 |
|-----------|-------|-----------------------------------|---------------------|-----------------------------------|
| 201.FL201 | 2001 | NO | NO | 3/8 DIA OUTSIDE 1/4 DIA INSIDE |
| 202.FL202 | 2002 | | | |
| 203.FL203 | 2003 | YES | YES | NO |
| 205.FL205 | Y2005 | | | |
| 25.FL25 | Y2015 | NO | | |

LOCK STILE MACHINING



STRIKE S300 (STANDARD)
ROLLER STRIKE S301 (OPTIONAL)

NOTE:
"LETTER" AT END OF TRIM MODEL NO. DESIGNATES GRIP STYLE. EXCEPT AS NOTED, GRIP STYLE HAS NO EFFECT ON STILE MACHINING.

**LBR DEVICES:
OMIT BOTTOM BOLT MACHINING.
FIRE BOLT REQ'D FOR FL DEVICES
SEE DRAWING 0297-II-000 FOR DETAILS**