

Dual Switch Push Plate

For online instructions, assistance or warranty information:
Call 1-800-392-5209 or visit <https://dhwsupport.dormakaba.com/hc/en-us>

PRODUCT DESCRIPTION

This push plate is designed to fit into either double-gang or 4x4 electrical boxes. Typical uses include controlling inside and outside doors of a vestibule. The faceplates are made of 1/16" thick stainless steel for durable use. The push plate may be hard wired to the door operator or connected to one of BEST's line of radio-controlled transmitters.

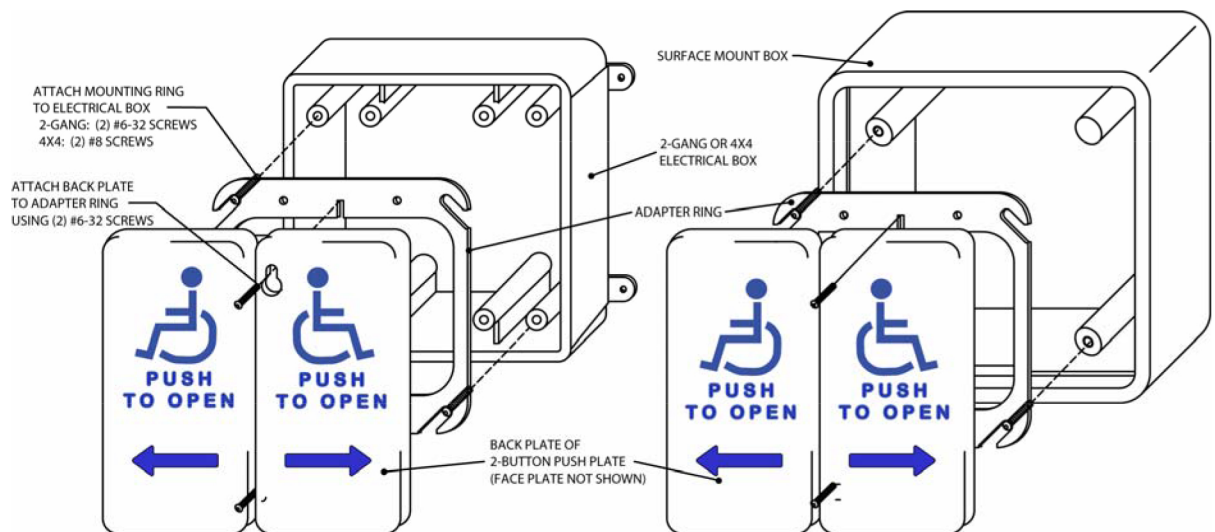
SAFETY PRECAUTIONS



- Shut off all power going to the header before attempting any wiring procedures.
- Maintain a clean & safe environment when working in public areas.
- Constantly be aware of pedestrian traffic around the door area.
- Always stop pedestrian traffic through the doorway when performing tests that may result in unexpected reactions by the door.
- Always check placement of all wiring before powering up to insure that moving door parts will not catch any wires and cause damage to equipment.
- Ensure compliance with all applicable safety standards (example: ANSI A156.19) upon completion of installation.

INSTALLATION

1. Attach the adapter ring to the electrical box. Use (2) #6-32 screws for 2-gang electrical boxes or (2) #8-32 screws for 4x4 boxes.
2. Wire the switches of the push plates to the door controllers or radio controlled transmitters using the NO or NC contacts and common.
3. Start (2) #6-32 screws into the center holes of the adapter ring. Place the keyway-shaped holes of the back plate over the holes, and fully tighten the screws with the enclosed hex key.
4. Test the push plates for proper activation.



CLEANING

The push plates are constructed with durable stainless steel and painted with scuff-resistant coatings. To clean the plates, use only a damp, non-abrasive cloth. Repeated cleaning with harsh solvents or abrasive materials may cause deterioration of the coating. Please make the end-user aware of this procedure.

COMPANY CONTACT

If after troubleshooting a problem, a satisfactory solution cannot be achieved, please contact:

1-800-392-5209 or visit <https://dhwsupport.dormakaba.com/hc/en-us>

NEVER sacrifice the safe operation of the automatic door or gate for an incomplete solution.