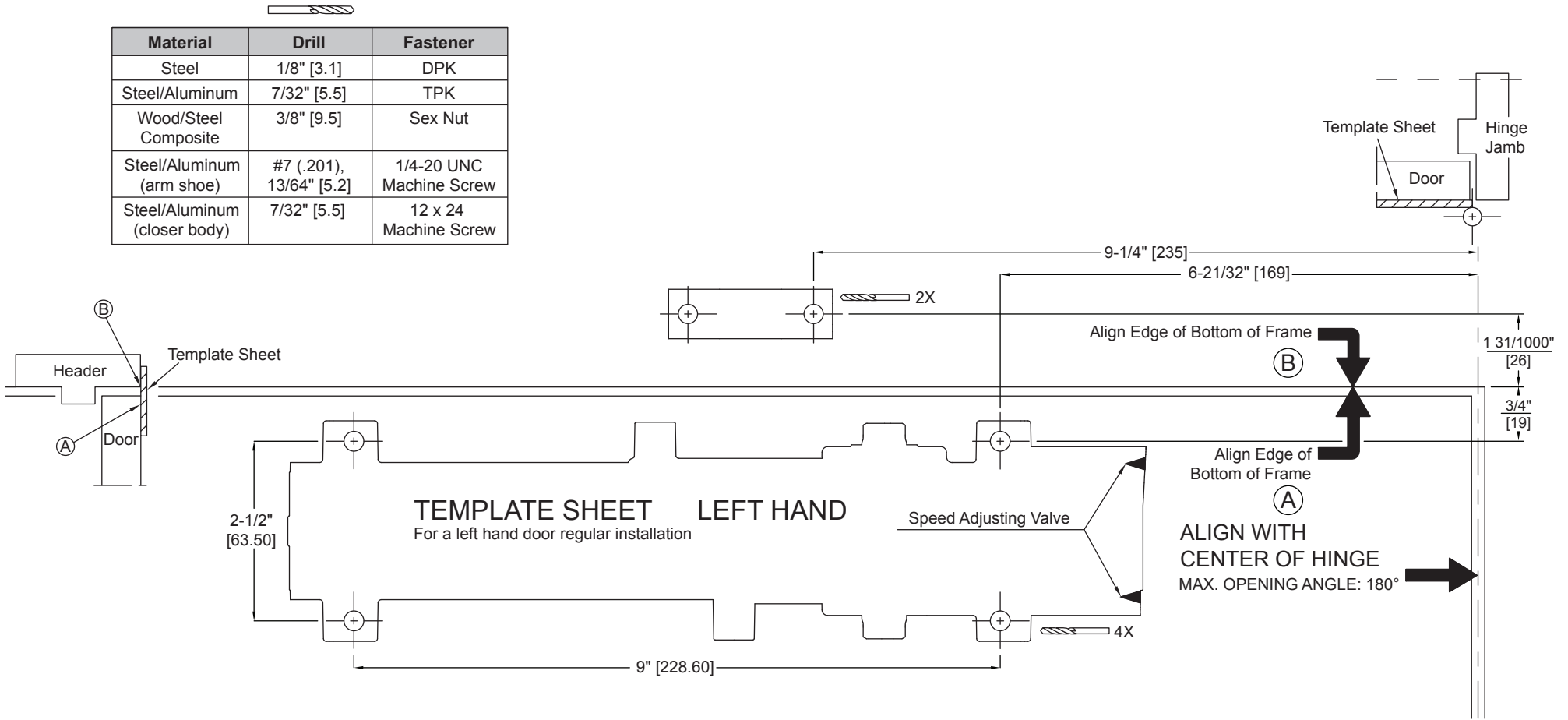


**Door Closer Models: HD8016 and HD8056 AF80,
FH, PH, IS, ISH Left Hand (Pull Side Mount) Regular
Template/Drilling Instructions**

Always consult BEST's website for the latest template at
<https://dhwsupport.dormakaba.com/hc/en-us> or call 1-800-392-5209.



Material	Drill	Fastener
Steel	1/8" [3.1]	DPK
Steel/Aluminum	7/32" [5.5]	TPK
Wood/Steel Composite	3/8" [9.5]	Sex Nut
Steel/Aluminum (arm shoe)	#7 (.201), 13/64" [5.2]	1/4-20 UNC Machine Screw
Steel/Aluminum (closer body)	7/32" [5.5]	12 x 24 Machine Screw



NOTE:
A supplemental door stop is always recommended for installations not incorporating a stop in the closer arm. Damage to the door, frame and closer may occur if no stop is used.