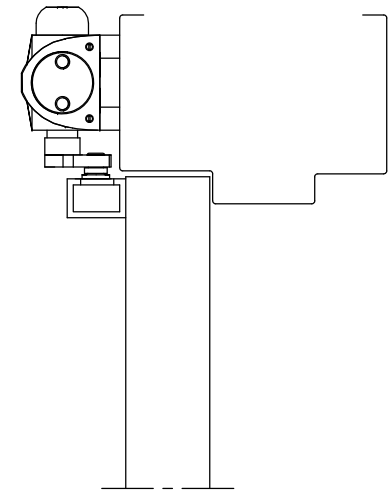
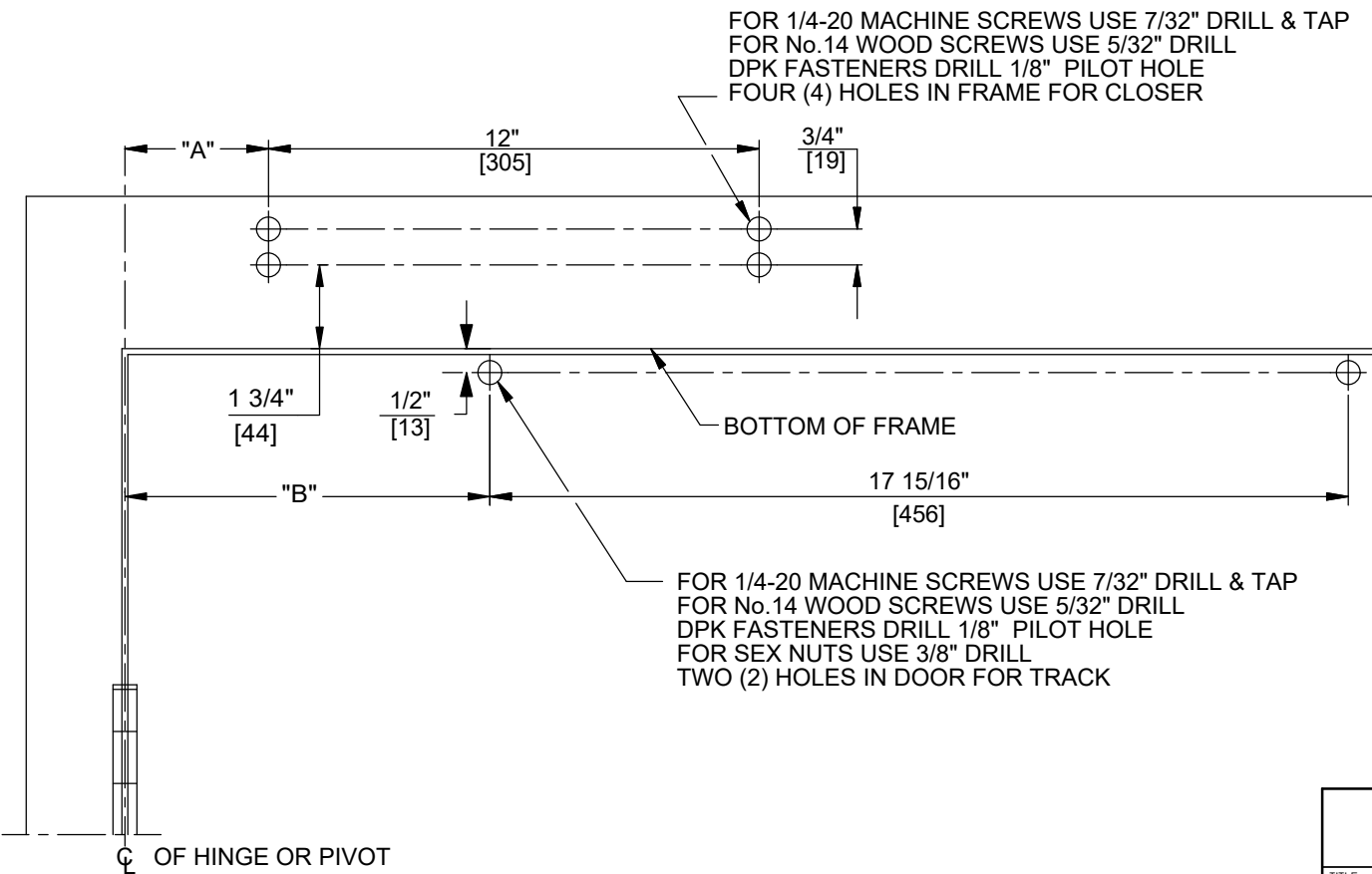


REVISION TABLE				
REV.	ECN NO.	DESCRIPTION	BY	DATE
A	-	UPDATED TO dormakaba STANDARD	AFW	2019-10-29

- NOTES:
- DO NOT SCALE DRAWING.
 - DIMENSIONS ARE IN INCHES/(MM).
 - RIGHT HAND DOOR SHOWN.
 - CAUTION: SEX NUTS ARE REQUIRED FOR ATTACHMENT OF COMPONENTS TO UNREINFORCED DOORS AND TO WOOD OR PLASTIC FACED COMPOSITE TYPE FIRE DOORS, UNLESS AN ALTERNATIVE METHOD IS IDENTIFIED IN THE INDIVIDUAL DOOR MANUFACTURER'S LISTINGS.
 - MAX. OPENING IS 180°.
 - OPTIONAL DPK FASTENERS (DPK86) FOR STEEL DOOR & FRAME ONLY.

ANGLE OF OPENING	DIM. "A" CLOSER	DIM. "B" TRACK	HOLD OPEN RANGE
85°	1-1/4 (32)	10-3/8 (263)	30°-83°
90°	1-1/4 (32)	9-3/8 (238)	30°-88°
110°	0 (0)	7-1/2 (190)	30°-108°
180°	-1/2 (-13)	4-7/8 (124)	30°-160°



dormakaba dormakaba USA, INC.
www.dormakaba.us
800 523 8483

TITLE: **DOOR CLOSER MODELS: 8616 T, TH
TRACK INSTALLATION (PULL SIDE MOUNT)**

DO NOT SCALE DRAWING	SHEET SIZE	DWG NO	REV
	A	08279602	A
			SHEET 1 OF 1