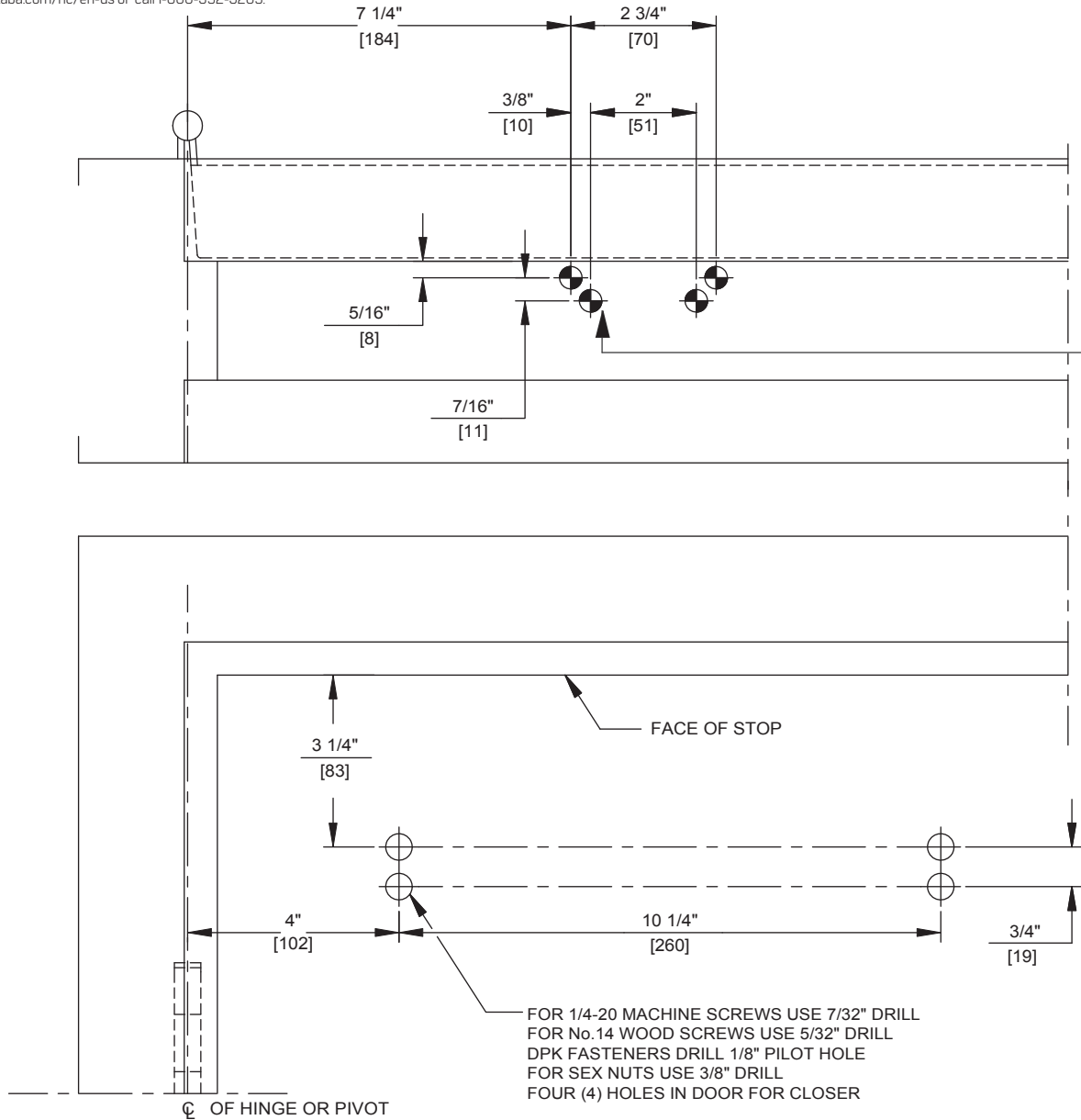


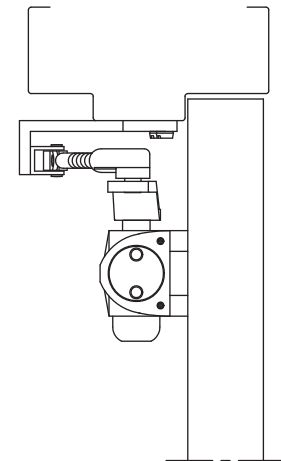
**Door Closer Models: SL6014 and SL6036**  
**ARP, A08P Parallel Arm (Push Side Mount)**  
**Template/Drilling Instructions**

Always consult BEST's website for the latest template at <https://dhwsupport.dormakaba.com/hc/en-us> or call 1-800-392-5209.



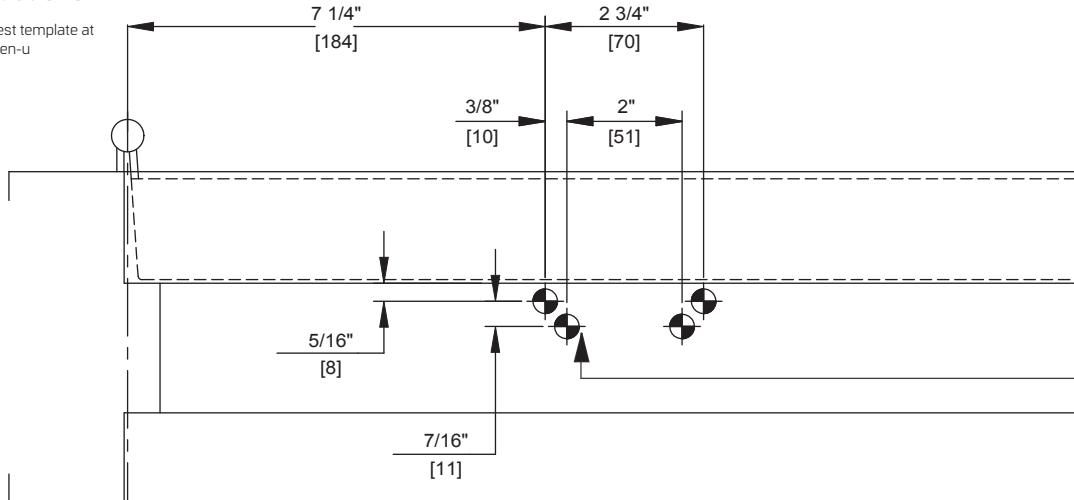
- NOTES:
1. DO NOT SCALE DRAWING.
  2. DIMENSIONS ARE IN INCHES/(MM).
  3. LEFT HAND DOOR SHOWN.
  4. CAUTION: SEX NUTS ARE REQUIRED FOR ATTACHMENT OF COMPONENTS TO UNREINFORCED DOORS AND TO WOOD OR PLASTIC FACED COMPOSITE TYPE FIRE DOORS, UNLESS AN ALTERNATIVE METHOD IS IDENTIFIED IN THE INDIVIDUAL DOOR MANUFACTURER'S LISTINGS.
  5. MAX. OPENING IS 180°.
  6. DPK SELF-DRILLING FASTENERS FOR STEEL DOOR & FRAME ONLY (INCLUDED WITH EVERY CLOSER).

FOR 1/4-20 MACHINE SCREWS USE 7/32\"/>



**Door Closer Models: SL6014 and SL6036**  
**ARP, A08P Parallel Arm (Push Side Mount)**  
**with Plate DP60**  
**Template/Drilling Instructions**

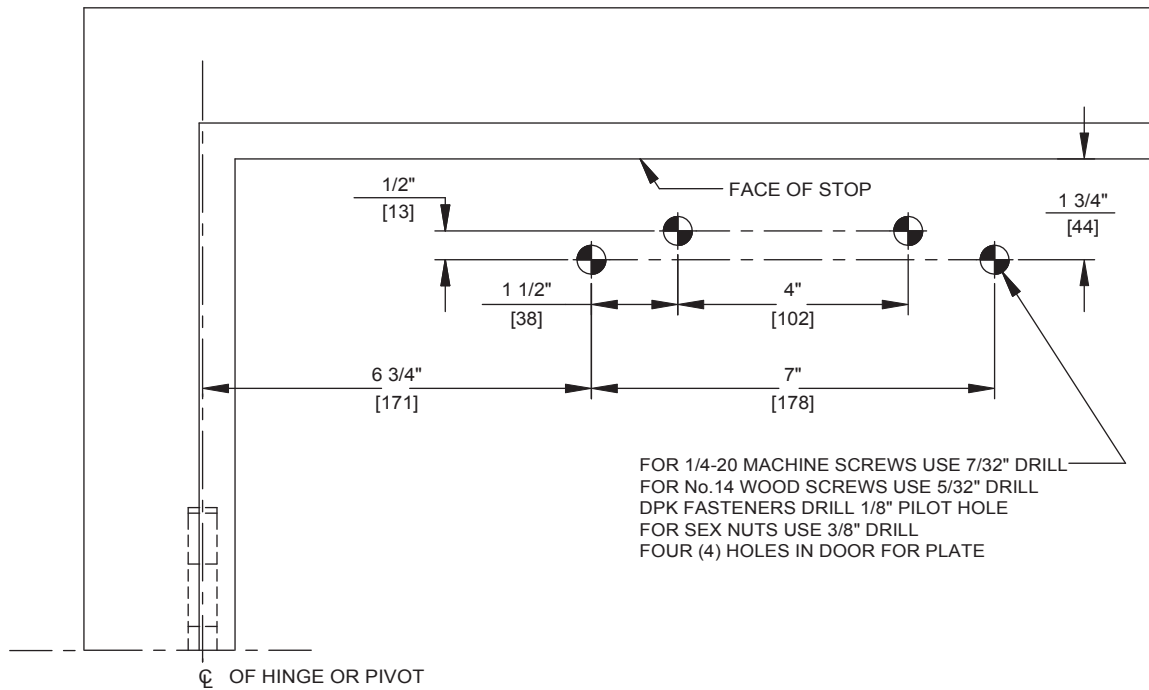
Always consult BEST's website for the latest template at <https://dhwsupport.dormakaba.com/hc/en-u> or call 1-800-392-5209.



**NOTES:**

1. DO NOT SCALE DRAWING.
2. DIMENSIONS ARE IN INCHES/(MM).
3. LEFT HAND DOOR SHOWN.
4. CAUTION: SEX NUTS ARE REQUIRED FOR ATTACHMENT OF COMPONENTS TO UNREINFORCED DOORS AND TO WOOD OR PLASTIC FACED COMPOSITE TYPE FIRE DOORS, UNLESS AN ALTERNATIVE METHOD IS IDENTIFIED IN THE INDIVIDUAL DOOR MANUFACTURER'S LISTINGS.
5. MAX. OPENING IS 180°.
6. DPK SELF-DRILLING FASTENERS FOR STEEL DOOR & FRAME ONLY (INCLUDED WITH EVERY CLOSER).

FOR 1/4-20 MACHINE SCREWS USE 7/32" DRILL  
FOR No. 14 WOOD SCREWS USE 5/32" DRILL  
DPK FASTENERS DRILL 1/8" PILOT HOLE  
FOUR (4) HOLES IN FRAME FOR PA BRACKET



FOR 1/4-20 MACHINE SCREWS USE 7/32" DRILL  
FOR No. 14 WOOD SCREWS USE 5/32" DRILL  
DPK FASTENERS DRILL 1/8" PILOT HOLE  
FOR SEX NUTS USE 3/8" DRILL  
FOUR (4) HOLES IN DOOR FOR PLATE

