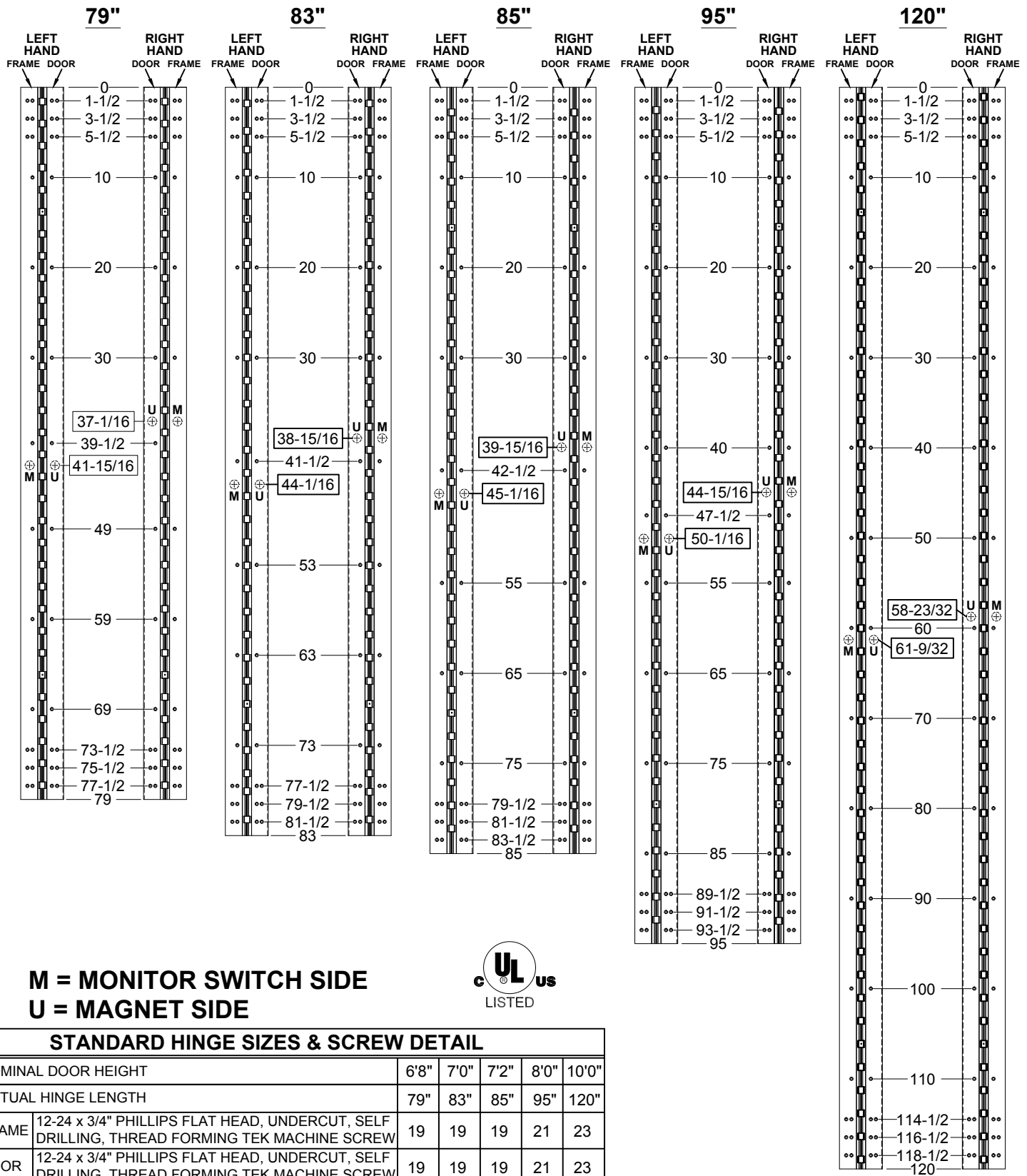


# 662HD - (CS) CONCEALED SWITCH



**M = MONITOR SWITCH SIDE**  
**U = MAGNET SIDE**



## STANDARD HINGE SIZES & SCREW DETAIL

NOMINAL DOOR HEIGHT	6'8"	7'0"	7'2"	8'0"	10'0"
ACTUAL HINGE LENGTH	79"	83"	85"	95"	120"
FRAME 12-24 x 3/4" PHILLIPS FLAT HEAD, UNDERCUT, SELF DRILLING, THREAD FORMING TEK MACHINE SCREW	19	19	19	21	23
DOOR 12-24 x 3/4" PHILLIPS FLAT HEAD, UNDERCUT, SELF DRILLING, THREAD FORMING TEK MACHINE SCREW	19	19	19	21	23

**STANLEY**

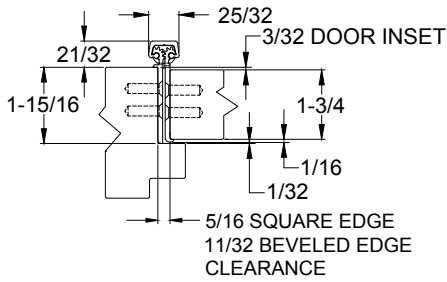
dormakaba USA Inc.  
 6161 East 75th Street  
 Indianapolis, IN 46250 USA  
 Customer Service: 1-855-365-2407

[stanleyhardwarefordoors.com](http://stanleyhardwarefordoors.com)

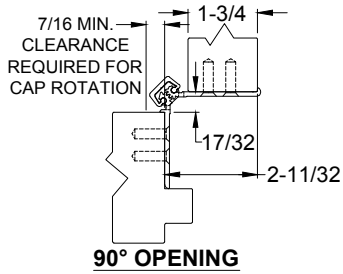
T91652\_A  
 662HD - (CS) CONCEALED SWITCH

©2020 All rights reserved.

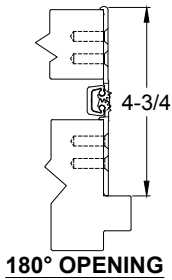
# 662HD - (CS) CONCEALED SWITCH



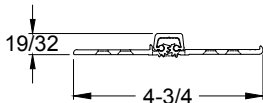
**CLOSED POSITION**



**90° OPENING**

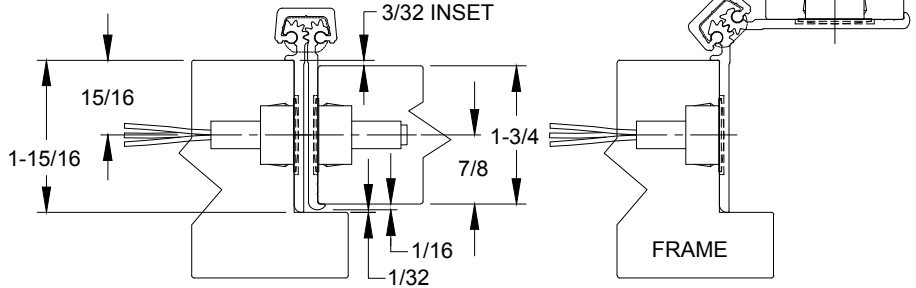


**180° OPENING**



**NOTES:**

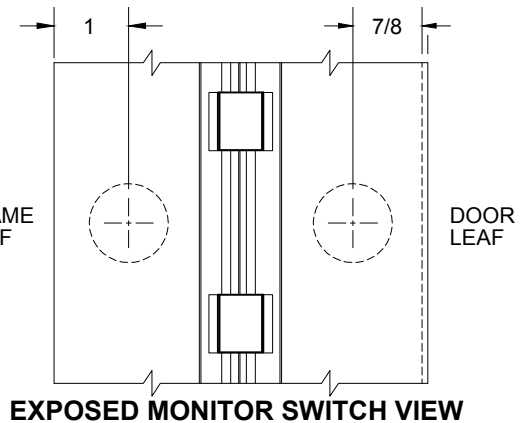
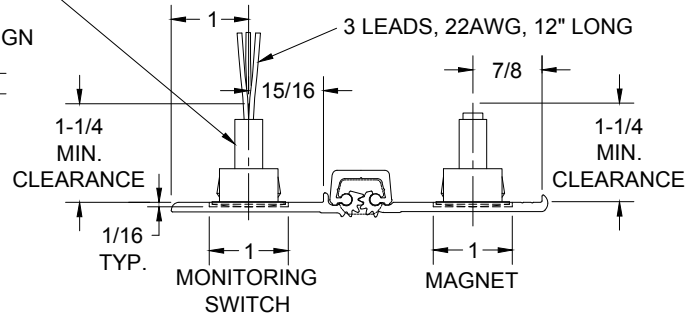
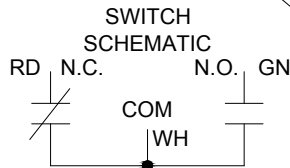
1. HINGES CUT TO CUSTOM LENGTH ARE CUT FROM BOTTOM OF HINGE.
2. SPECIFY HANDING WHEN ORDERING.
3. IF "M" OPTION (MOVEABLE PANEL) OR "R" OPTION (REMOVABLE PANEL) IS CHOSEN, TEMPLATE REMAINS THE SAME.



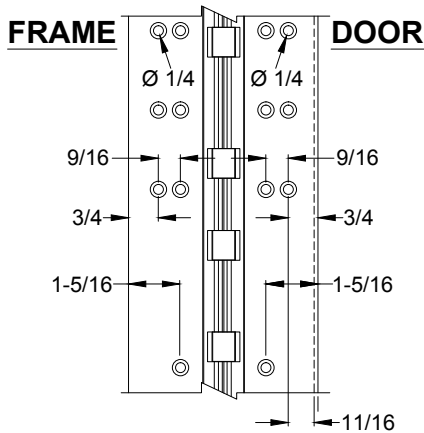
**MAGNETIC MONITOR SWITCH VIEW, LEFT HAND SHOWN**

NOTE: 7/8" DIA. MIN. CLEARANCE HOLE REQUIRED IN DOOR & FRAME FOR MONITORING SWITCH AND MAGNET

ELECTRICAL CONFIG.: SPDT  
 MAX. INITIAL CONTACT RESISTANCE : 0.140 OHM  
 MAX. CONTACT RATING: 5 WATT  
 MAX. SWITCHING VOLTAGE: 175 VDC  
 MAX. SWITCHING CURRENT: 0.25 AMP



**EXPOSED MONITOR SWITCH VIEW**



**STANLEY**

dormakaba USA Inc.  
 6161 East 75th Street  
 Indianapolis, IN 46250 USA  
 Customer Service: 1-855-365-2407

[stanleyhardwarefordoors.com](http://stanleyhardwarefordoors.com)

T91652\_A  
 662HD - (CS) CONCEALED SWITCH

©2020 All rights reserved.