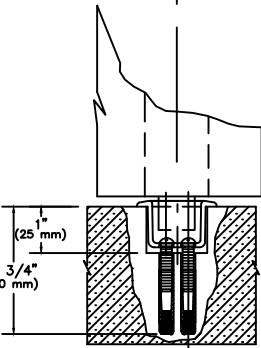
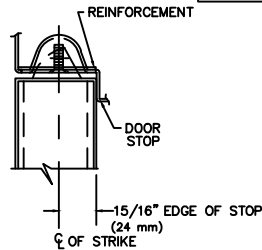
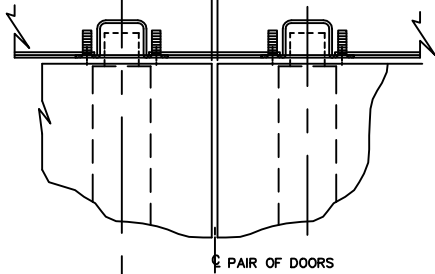


NO. 418

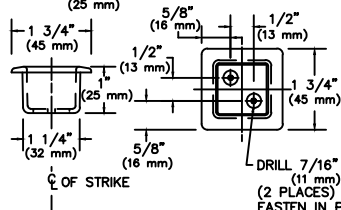
FOR DEVICE
REFERENCE DIMENSION
SEE DEVICE TEMPLATE

EDGE OF DOOR
1/8" (3 mm)



NOTE: 1 5/16" MIN. TO 1 5/8" MAX.
(33 mm) (41 mm)

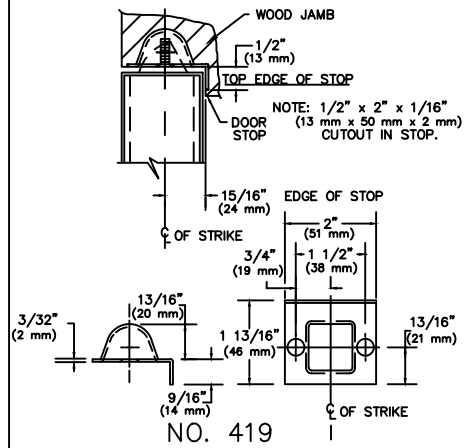
SQUARE CUTOUT FOR RECEIVED
STRIKE 1" DEEP.
(25 mm)



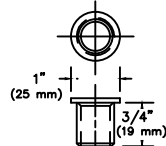
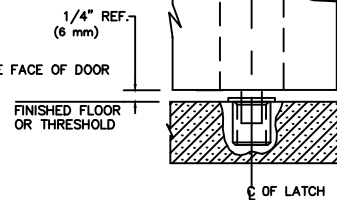
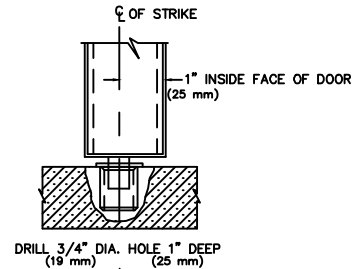
NO. 431

NOTES:

1. FOR DEVICE FUNCTION SEE APPROPRIATE DEVICE TEMPLATE.
2. IF DOOR SILENCERS ARE USED ON THE DOOR FRAME, STRIKE LOCATION MUST BE ADJUSTED ACCORDINGLY.

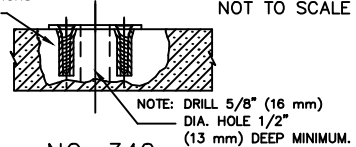


ADDITIONAL PREP REQUIRED FOR USE OF NO. 419 OPTIONAL STRIKE.
NOTE: STRIKE IS PRIMARILY USED ON WOOD JAMB INSTALLATIONS.



NO. 439

FOR SURFACE STRIKE
DRILL (2) 5/16" (8 mm)
DIA. HOLES X 1" (25 mm)
DEEP FOR LEAD ANCHORS
& 12 X 1" F.H.P.T.S.



NO. 340

REV. No. 3

REVISION: Add 9600

DATE: 2-23-2010



418, 419, 431, 439 & 340 STRIKES
WITH 9100/F9100 & 9600/F9600 SERIES
CONCEALED VERTICAL ROD EXIT DEVICES

TEMPLATE NUMBER
T-0117③