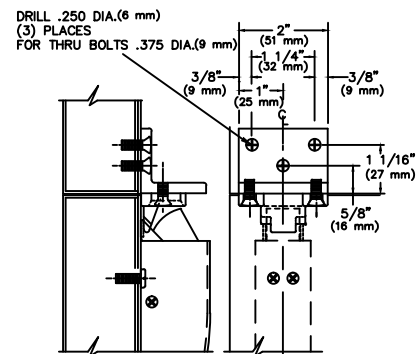
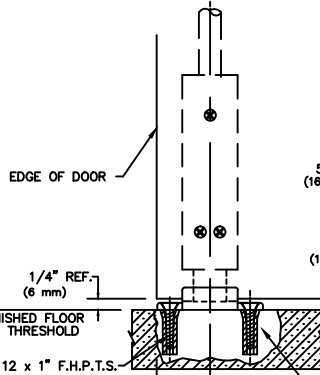
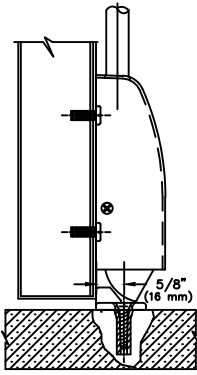


NO.14 DRILL & TAP 12-24 FOR 12-24 x 3/4" O.H.P.M.S. (2 PLACES)

NO. 426

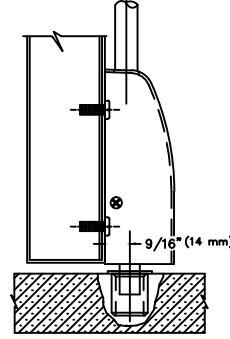


OPTIONAL ANGLE: FOR TRANSOM TYPE OF INSTALLATION (PART NO. #6400-417-500)



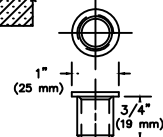
NO. 416

FOR SURFACE STRIKE DRILL (2) 5/16" (8 mm) DIA. X 1" (25 mm) DEEP. FOR LEAD ANCHORS & 12 X 1" F.H.P.T.S.

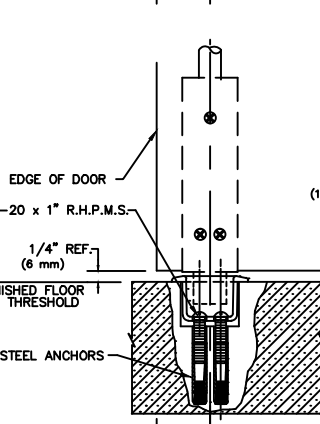
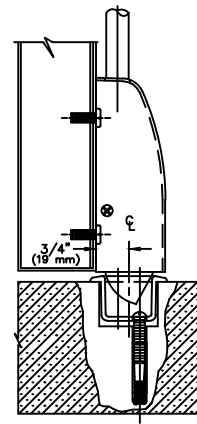


NO. 12 x 1" F.H.P.T.S. LEAD ANCHORS

EDGE OF DOOR SEE DEVICE TEMPLATE FOR BACKSET



NOTE: DRILL 3/4" (19 mm) DIA. HOLE 1" (25 mm) DEEP NO. 439



NO. 431

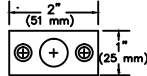
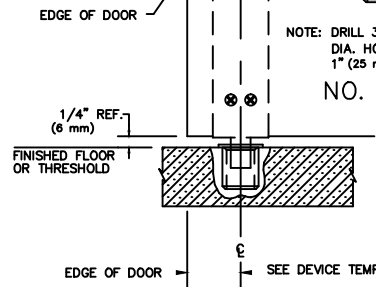
DRILL 3/8" DIA. x 2" DEEP (10 mm) (51 mm) (2 PLACES) FOR STEEL ANCHORS. FASTEN IN PLACE WITH (2) 1/4"-20 x 1" R.H.P.M.S.

1/4"-20 x 1" R.H.P.M.S.

FINISHED FLOOR OR THRESHOLD

EDGE OF DOOR SEE DEVICE TEMPLATE FOR BACKSET

NOTE: 1 5/16" MIN. TO 1 5/8" MAX. (33 mm) (41 mm) SQUARE CUTOUT FOR RECESSED STRIKE 1" (25 mm) DEEP.



FOR SURFACE STRIKE DRILL (2) 5/16" (8 mm) DIA. HOLES X 1" (25 mm) DEEP FOR LEAD ANCHORS & 12 X 1" F.H.P.T.S.

NO. 340

NOTE: DRILL 5/8" (16 mm) DIA. HOLE 1/2" (13 mm) DEEP MINIMUM.

NOT TO SCALE

NOTES:

1. FOR DEVICE FUNCTION SEE APPROPRIATE DEVICE TEMPLATE.
2. IF DOOR SILENCERS ARE USED ON THE DOOR FRAME, STRIKE LOCATION MUST BE ADJUSTED ACCORDINGLY.

REV. No. 2	REVISION: Add 9800	DATE: 2-23-2010
	416, 426, 431, 439 & 340 STRIKES WITH 4400, 5400, 6400, 8400, 9400 & 9800 SERIES SURFACE VERTICAL ROD EXIT DEVICES	TEMPLATE NUMBER T-0107 ②