

NOTE: ON 2" STILES OR LESS LATCH CENTER LINE IS 1/16" LESS THAN DEVICE

STEEL, WOOD AND ALL FIRE DOORS (METAL EDGE GUARD MAY BE REQ. ON WOOD FIRE DOOR APPLICATIONS)

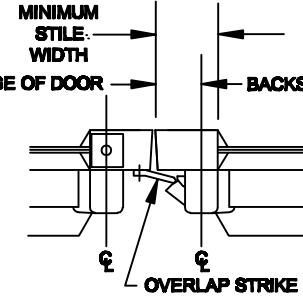
REINFORCEMENT MAY BE REQUIRED TO MAINTAIN 1/4" AND TO PROVIDE SUPPORT FOR MOUNTING.

NOTE: OUTER MOUNTING ANGLE MAY BE OMITTED ON NON-FIRE RATED DOORS HAVING LESS THEN 2 3/8" BACKSET.

NOTES:

SEE MASTER SHEET #T-0001 FOR SUGGESTED DOOR REINFORCEMENT
 SEE ADDITIONAL TRIM TEMPLATES FOR OUTSIDE TRIM (WHEN REQUIRED)
 SEE T-9600WD AND T-9600WDEG FOR WOOD DOOR PREPS.

	BACKSET	MIN. STILE
MINIMUM	1 1/4"	2 1/16"
F9600	2 3/4"	3 3/16"



BACKSET	MIN. STILE
1 5/8"	2 7/16"

REV. No. 0

REVISION:

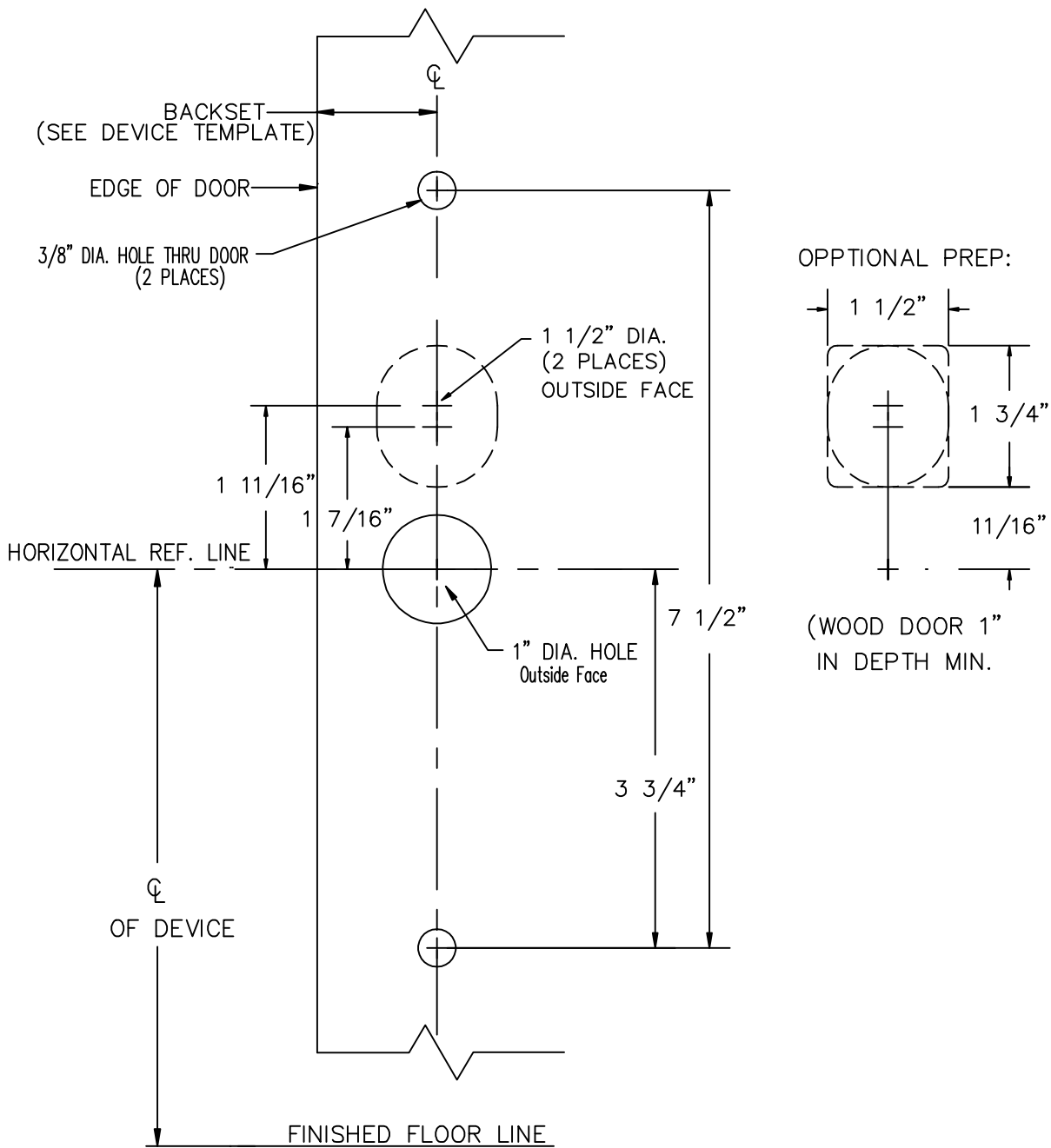
DATE: 2-2-2010



9600 & F9600 x 08,09,11 & 12 TRIMS
 CONCEALED VERTICAL ROD TYPE
 EXIT DEVICE

TEMPLATE NUMBER
 T-9605©

RHR SHOWN
LHR OPPOSITE



NOTES:

1. SEE MASTER SHEET #T-0001 FOR SUGGESTED DOOR REINFORCEMENT.

REV. No. 0

REVISION:

DATE: 2-2-2010



ZK08/09, ZT08/09, ZR0809, ZC08/09, ZG08/09, ZP11/12
ZT08/09C, ZR08/09C, ZC08/09C, ZG08/09C
TRIM

TEMPLATE NUMBER

T-9034©