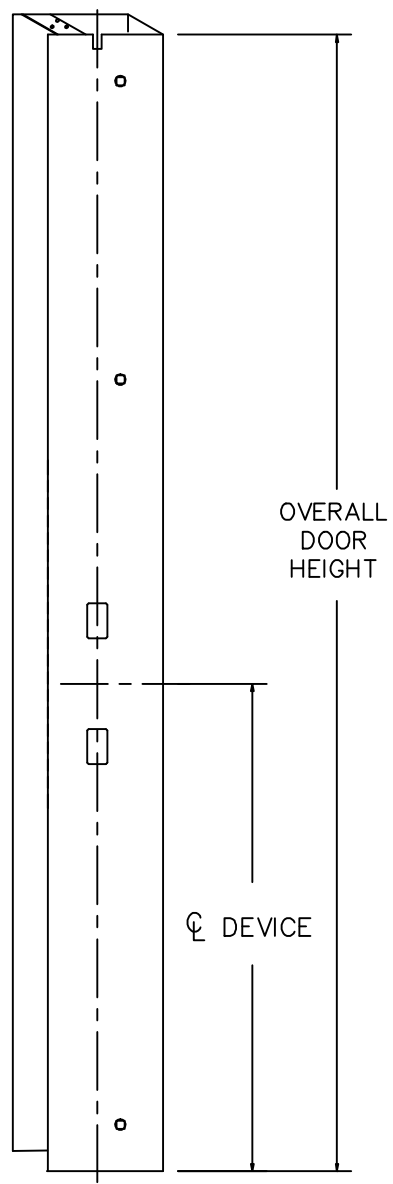
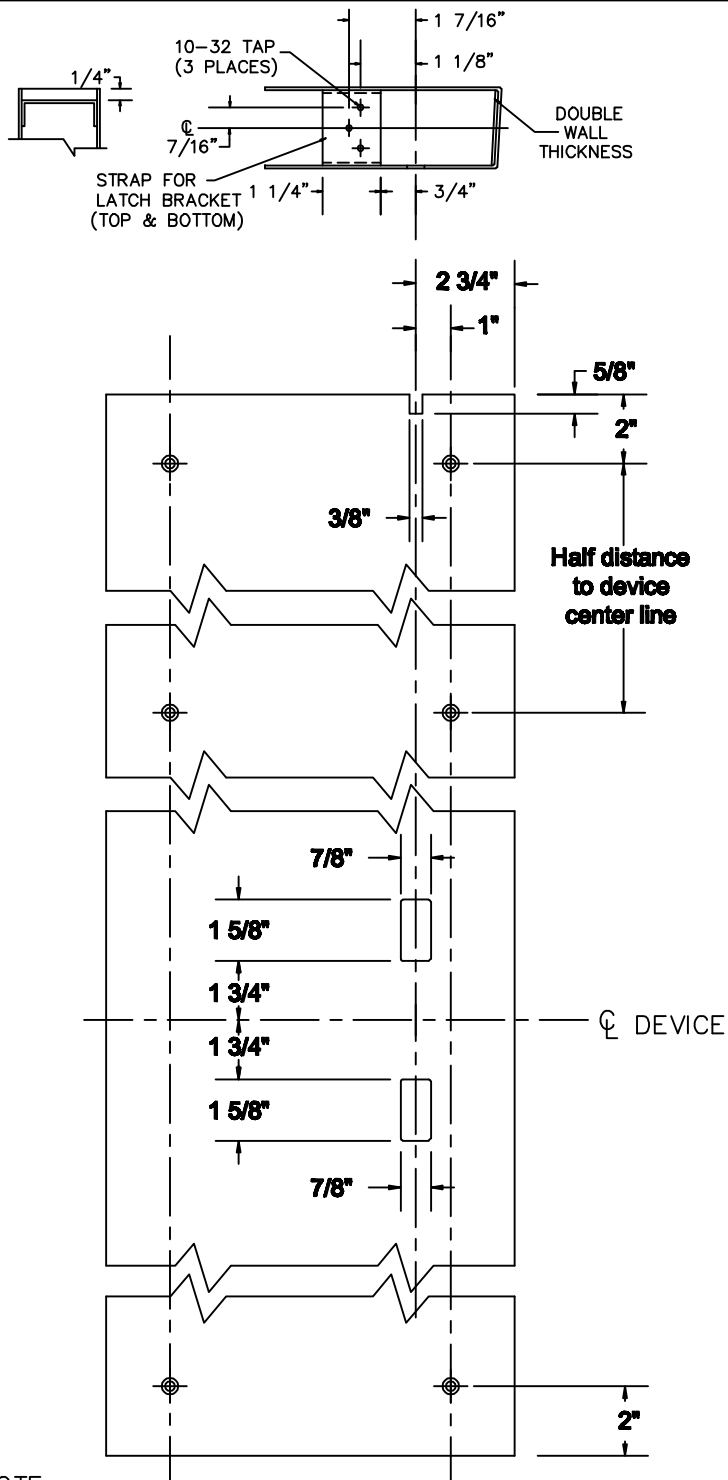


RHR shown
LHR opposite



NOTE:
1. SEE ADDITIONAL TRIM TEMPLATE WHEN REQUIRED.
2. MOUNTING HOLES TO BE DRILLED WHEN INSTALLING HARDWARE.

REV. No. 0	REVISION:	DATE: 2-12-2010
------------	-----------	-----------------



5" CHANNEL FOR
FIRE RATED MODELS F9600
CONCEALED VERTICAL ROD
EXIT DEVICE FOR WOOD DOORS

TEMPLATE NUMBER
T-9600WDEG
©