

NOTE: ON 2" STILES OR LESS LATCH CENTER LINE IS 1/16" LESS THAN DEVICE

7/32" DIA. HOLE C'SINK TO 3/8" DIA. (2) PLACES

BACKSET EDGE OF DOOR
3/8" DIA. THRU (2) PLACES
1 1/2" DIA. MAX. (2) PLACES OUTSIDE FACE ONLY

1" DIA. THRU
CUTOUT 3/4" x 1 5/8" INSIDE FACE ONLY (2) PLACES

7/32" DIA. HOLE C'SINK TO 3/8" DIA. (2) PLACES

STEEL, WOOD AND ALL FIRE DOORS (METAL EDGE GUARD MAY BE REQ. ON WOOD FIRE DOOR APPLICATIONS)

REINFORCEMENT MAY BE REQUIRED TO MAINTAIN 1/4" AND TO PROVIDE SUPPORT FOR MOUNTING.

NOTE: OUTER MOUNTING ANGLE MAY BE OMITTED ON NON-FIRE RATED DOORS HAVING LESS THEN 2 3/8" BACKSET.

OPTIONAL TOP AND BOTTOM PREP

40 5/16" FROM FINISHED FLOOR

39 5/8" FROM BOTTOM OF DOOR OR USING 1/2" THRESHOLD

	BACKSET	MIN. STILE
MINIMUM	1 1/4"	2 1/16"
F9600	2 3/4"	3 3/16"

	BACKSET	MIN. STILE
MINIMUM	1 5/8"	2 7/16"

NOTES:

SEE MASTER SHEET #T-0001 FOR SUGGESTED DOOR REINFORCEMENT

SEE ADDITIONAL TRIM TEMPLATES FOR OUTSIDE TRIM (WHEN REQUIRED)

SEE T-9600WD AND T-9600WDEG FOR WOOD DOOR PREPS.

REV. No. 0

REVISION:

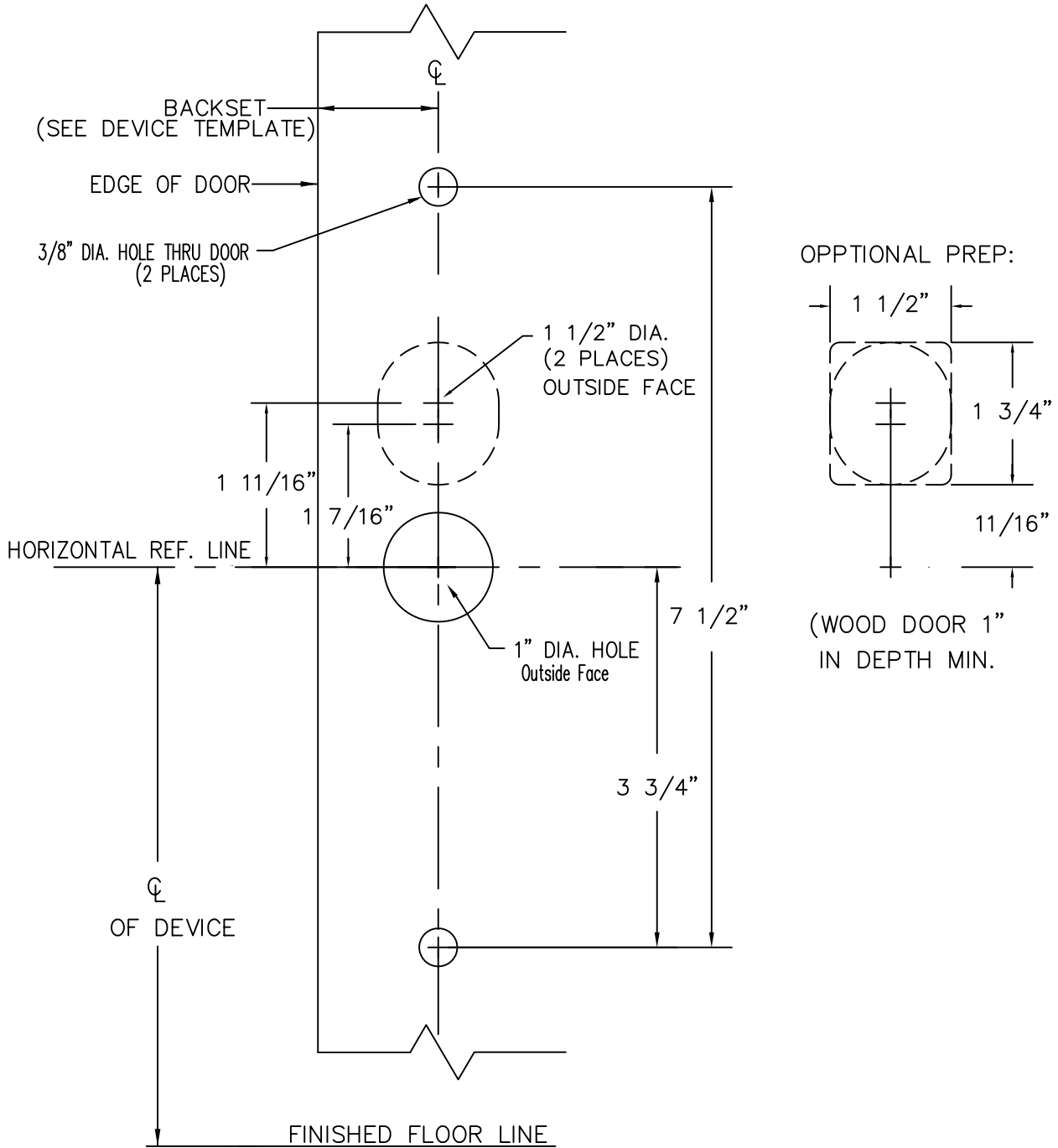
DATE: 2-2-2010



9600 & F9600 x 08,09,11 & 12 TRIMS
CONCEALED VERTICAL ROD TYPE
EXIT DEVICE


TEMPLATE NUMBER
T-9605©

RHR SHOWN
LHR OPPOSITE



NOTES:

1. SEE MASTER SHEET #T-0001 FOR SUGGESTED DOOR REINFORCEMENT.

REV. No. 1	REVISION: Lever Style Notes	DATE: 1-22-2014
	<p>Z*08, Z*08C, Z*09, Z*09C, ZP11, ZP12 TRIM</p> <p>Note; * Denotes all Lever Design Styles</p>	<p>TEMPLATE NUMBER T-9034 ①</p>