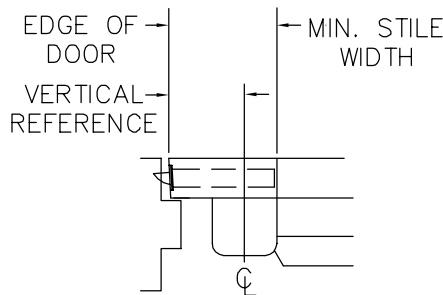
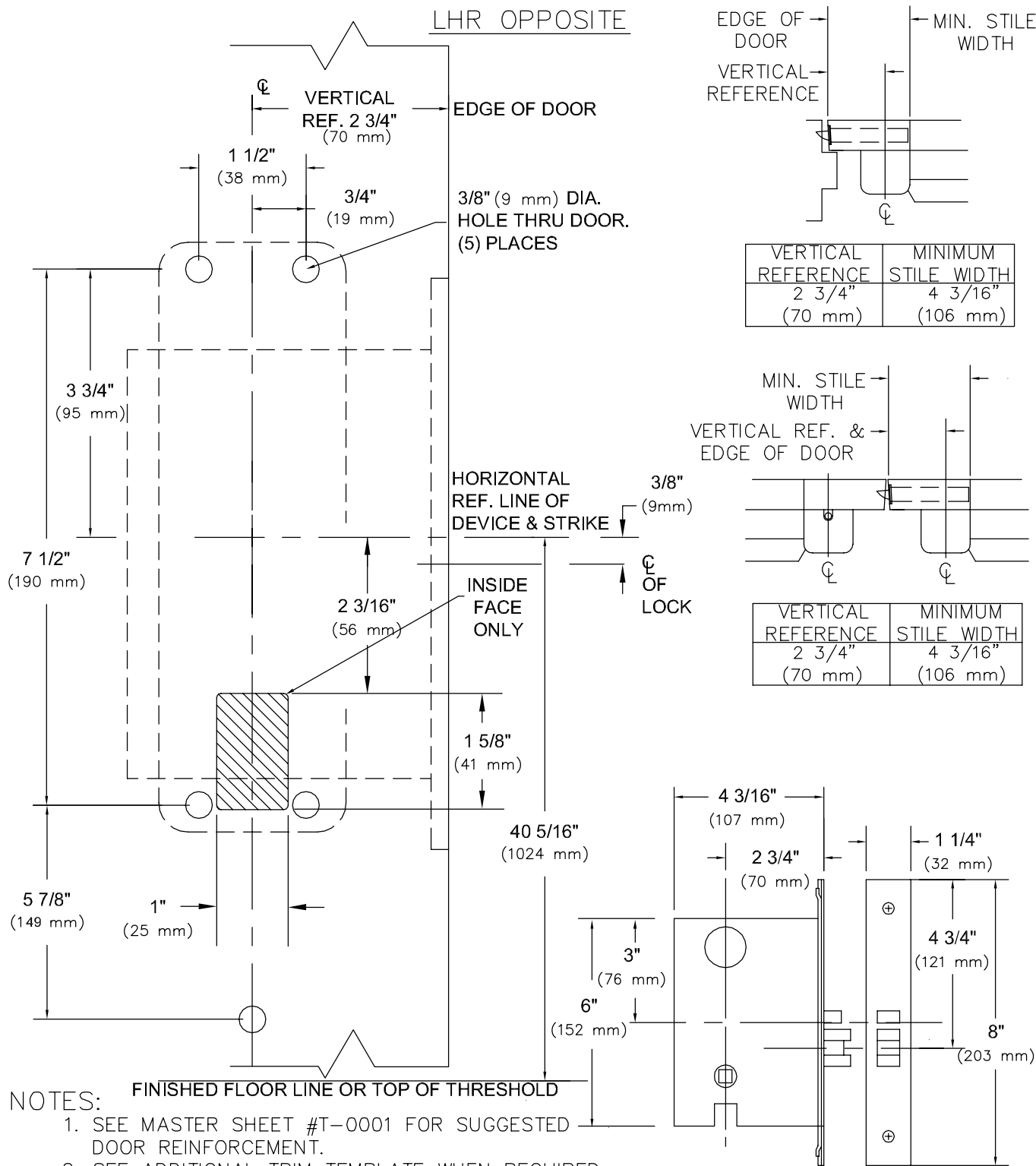
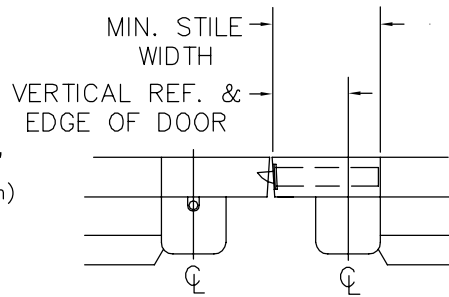


RHR SHOWN
LHR OPPOSITE



VERTICAL REFERENCE	MINIMUM STILE WIDTH
2 3/4" (70 mm)	4 3/16" (106 mm)



VERTICAL REFERENCE	MINIMUM STILE WIDTH
2 3/4" (70 mm)	4 3/16" (106 mm)

NOTES:

1. SEE MASTER SHEET #T-0001 FOR SUGGESTED DOOR REINFORCEMENT.
2. SEE ADDITIONAL TRIM TEMPLATE WHEN REQUIRED.
3. DEVICE WILL COVER STANDARD SDI CUTOUT.

REV. No. 4

REVISION: Trim Designation

DATE: 12-31-03

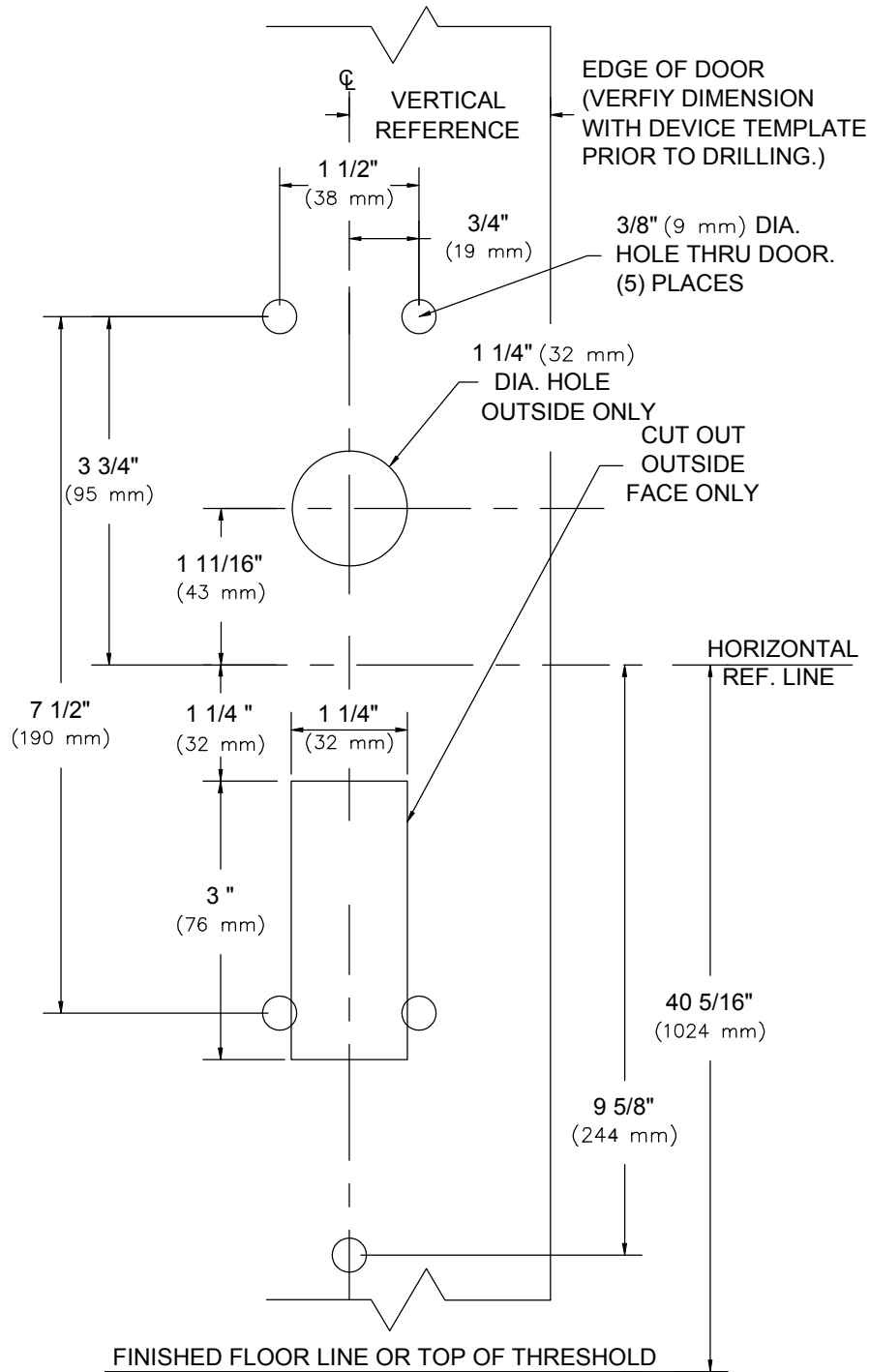


9500 & F9500 x VODT & NPTDT
 9500 & F9500 x HTT22M, or HRT22M
 9500 & F9500 x HTT05M, or HRT05M
 9500 & F9500 x V102, V302, PTT02, PRT02
 9500 & F9500 x V103M, V303M, PTT03M, PRT03M
 MORTISE TYPE EXIT DEVICE

TEMPLATE NUMBER

T-9502④

RHR SHOWN
LHR OPPOSITE



NOTES:

1. SEE MASTER SHEET #T-0001 FOR SUGGESTED DOOR REINFORCEMENT.
2. SEE ADDITIONAL DEVICE TEMPLATE WHEN REQUIRED.
3. TRIM WILL COVER STANDARD SDI CUTOUT.

REV. No. 3

REVISION: Dimension Correction

DATE: 8-14-03



HTT05M or HRT05M
TRIM

TEMPLATE NUMBER

T-9010 ③