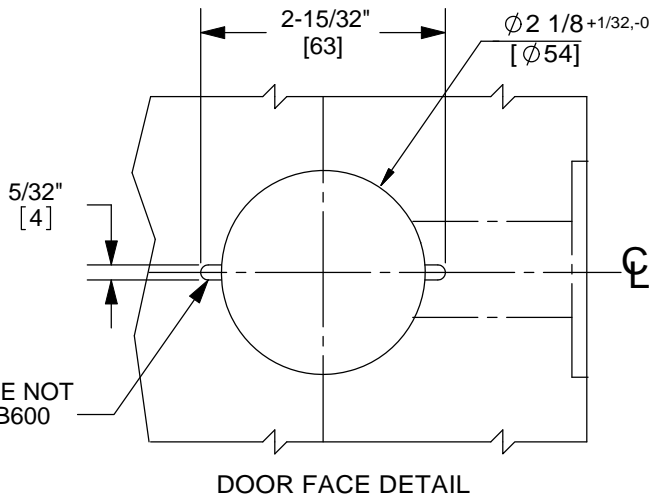
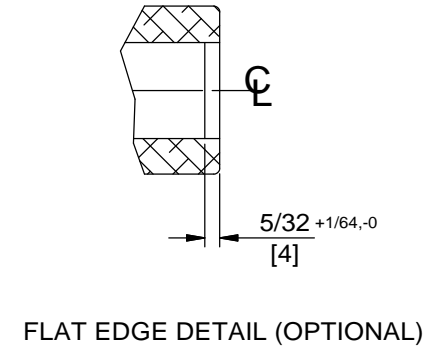
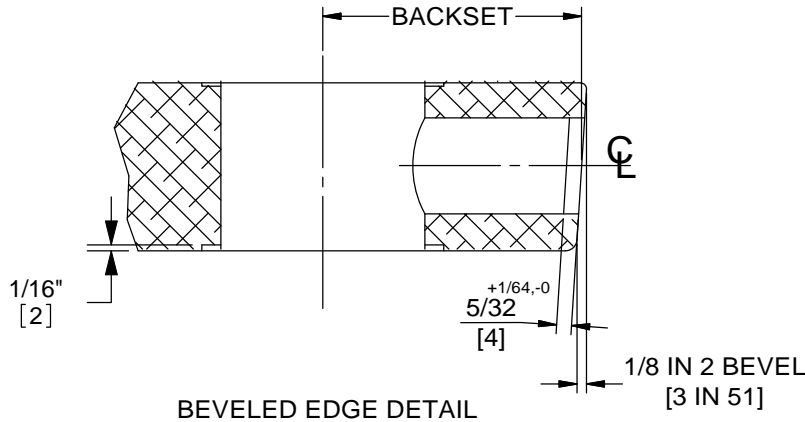
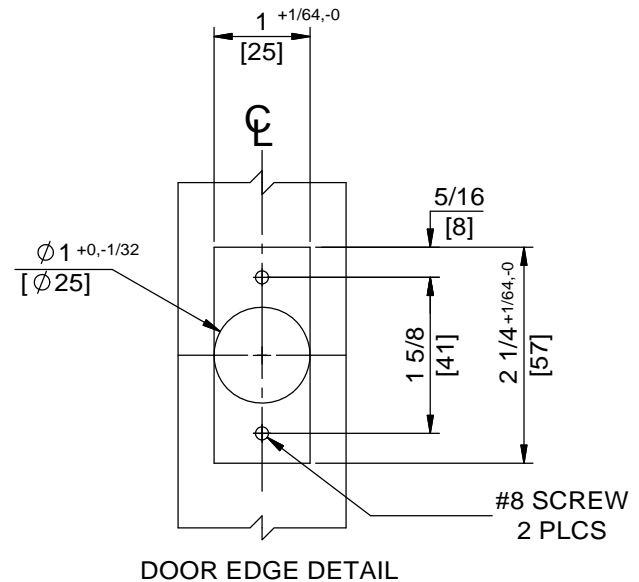


NOTES:

1. DIMENSIONS ARE IN INCHES/ [MM]
2. DO NOT SCALE DRAWING.



NOTE: NOTCHES ARE NOT REQUIRED FOR DB600



Wood Doors For:  
 C400, DB600, CL600, CK600, CK700 Series  
 Face Plate 1" Flat or Beveled



DORMA Architectural Hardware  
 Reamstown, PA 17567

NOTES:

1. DIMENSIONS ARE IN INCHES/ [MM]
2. DO NOT SCALE DRAWING.

