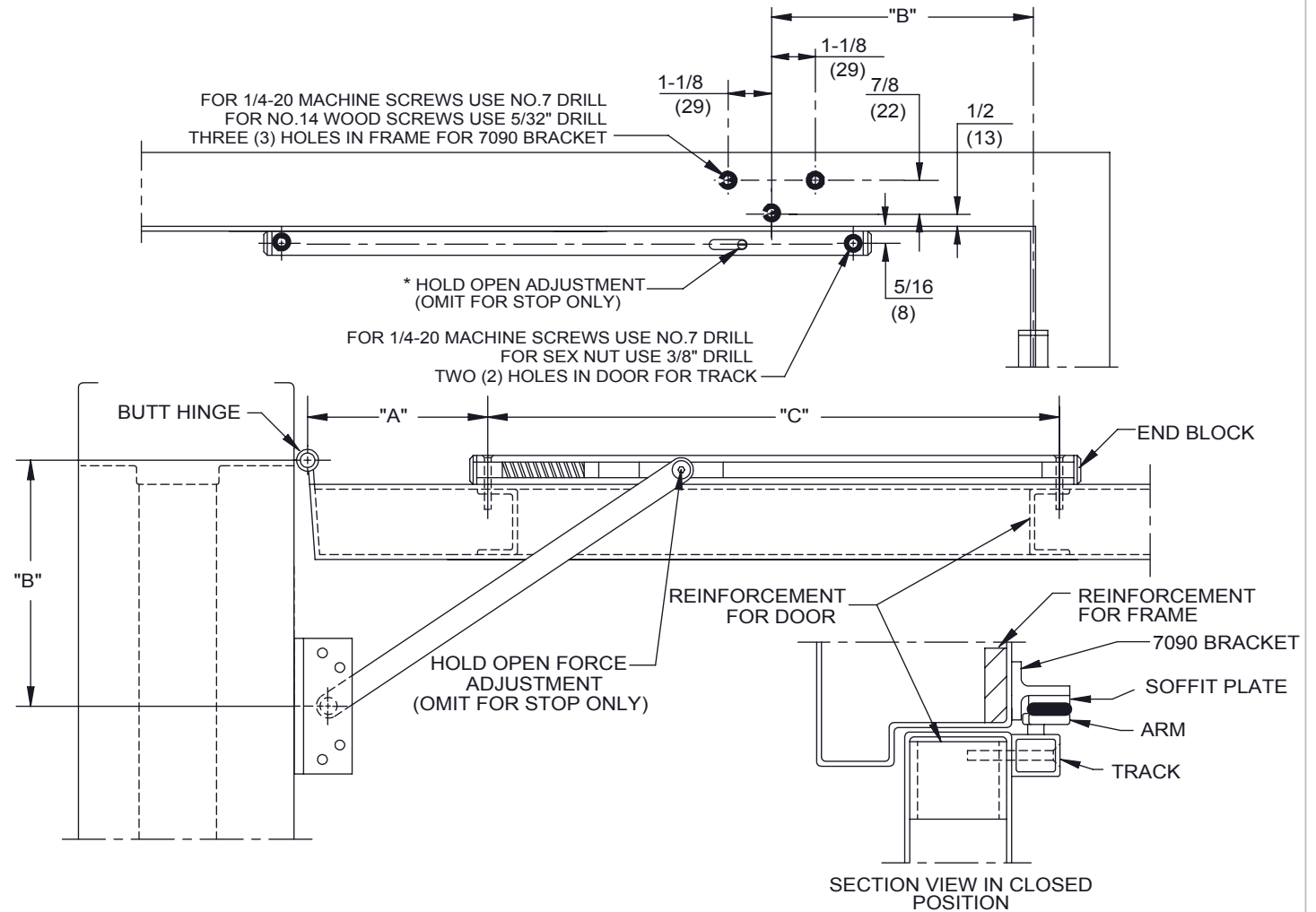
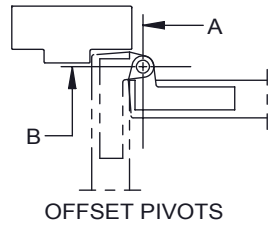


INSTALLATION INSTRUCTIONS:

1. Determine unit type: (S) DEAD STOP ONLY or (H) HOLD OPEN.
2. Determine degree of hold-open or dead stop required and select the "A", "B" and "C" dimensions from the opposite side of this page.
3. Prepare door and frame according to the template found on this page.
4. Install 7090 bracket on frame.
5. Place end blocks into each end of the track. Install track and arm assembly on door, making sure spring faces hinges.
6. Attach soffit plate to 7090 bracket.

*** ADDITIONAL INSTRUCTIONS (HOLD-OPEN UNITS):**

7. Adjust hold-open to on or off position. One direction on-opposite direction off.
8. Adjust the holding force by inserting a 5/64" hex key into the slide shoe bolt. Turn right to increase and left to decrease holding force.
9. Open door until slide shoe engages with hold-open.
10. To release the door, pull until the slide shoe disengages.



NOTES:

1. DO NOT SCALE DRAWING.
2. DIMENSIONS ARE IN INCHES (MM).
3. LEFT HAND DOOR SHOWN.

STOP AND HOLDER SERIES: 701H - 703H, 701S - 703S
STANDARD DUTY SURFACE APPLIED STOP/HOLDER
PULL SIDE MOUNT WITH 7090 BRACKET
3/4" OFFSET AND 4-1/2" X 4-1/2" HINGES



DORMA USA, Inc.
Reamstown, PA 17567

700S, 700H SERIES x 7090 BRACKET
STANDARD DUTY SURFACE OVERHEAD STOP AND HOLDER



UNIT	DEGREE OF OPENING	4-1/2" HINGES OR 3/4" PIVOTS			DIM "C"	DEGREE OF OPENING	UNIT
		DOOR RANGE	DIM "A"	DIM "B"			
701 S	85° DEAD STOP ONLY	22 to 27	5-7/8	4-1/2	14-3/4	85° DEAD STOP ONLY	701 S
	90° DEAD STOP ONLY		5-1/2	4-1/2		90° DEAD STOP ONLY	
	95° DEAD STOP ONLY		5-1/8	4-1/2		95° DEAD STOP ONLY	
	100° DEAD STOP ONLY		4-3/4	4-1/2		100° DEAD STOP ONLY	
	105° DEAD STOP ONLY		4-3/8	4-1/2		105° DEAD STOP ONLY	
	110° DEAD STOP ONLY		4	4-1/2		110° DEAD STOP ONLY	
701 H	85° HOLD OPEN	22 to 27	5-3/16	4-1/2	14-3/4	85° HOLD OPEN	701 H
	90° HOLD OPEN		4-3/4	4-1/2		90° HOLD OPEN	
	95° HOLD OPEN		4-3/8	4-1/2		95° HOLD OPEN	
	100° HOLD OPEN		4	4-1/2		100° HOLD OPEN	
	105° HOLD OPEN		3-11/16	4-1/2		105° HOLD OPEN	
	110° HOLD OPEN		3-5/16	4-1/2		110° HOLD OPEN	
702 S	85° DEAD STOP ONLY	27-1/8 to 36	8-7/16	6-1/2	17-1/4	85° DEAD STOP ONLY	702 S
	90° DEAD STOP ONLY		7-7/8	6-1/2		90° DEAD STOP ONLY	
	95° DEAD STOP ONLY		7-1/4	6-1/2		95° DEAD STOP ONLY	
	100° DEAD STOP ONLY		6-3/4	6-1/2		100° DEAD STOP ONLY	
	105° DEAD STOP ONLY		6-1/4	6-1/2		105° DEAD STOP ONLY	
	110° DEAD STOP ONLY		5-3/4	6-1/2		110° DEAD STOP ONLY	
702 H	85° HOLD OPEN	27-1/8 to 36	7-3/4	6-1/2	17-1/4	85° HOLD OPEN	702 H
	90° HOLD OPEN		7-1/8	6-1/2		90° HOLD OPEN	
	95° HOLD OPEN		6-9/16	6-1/2		95° HOLD OPEN	
	100° HOLD OPEN		6-1/16	6-1/2		100° HOLD OPEN	
	105° HOLD OPEN		5-9/16	6-1/2		105° HOLD OPEN	
	110° HOLD OPEN		5-1/16	6-1/2		110° HOLD OPEN	
703 S	85° DEAD STOP ONLY	36-1/8 to 54	12-1/16	8-1/2	20-3/4	85° DEAD STOP ONLY	703 S
	90° DEAD STOP ONLY		11-5/16	8-1/2		90° DEAD STOP ONLY	
	95° DEAD STOP ONLY		10-9/16	8-1/2		95° DEAD STOP ONLY	
	100° DEAD STOP ONLY		9-7/8	8-1/2		100° DEAD STOP ONLY	
	105° DEAD STOP ONLY		9-1/4	8-1/2		105° DEAD STOP ONLY	
	110° DEAD STOP ONLY		8-5/8	8-1/2		110° DEAD STOP ONLY	
703 H	85° HOLD OPEN	36-1/8 to 54	11-3/8	8-1/2	20-3/4	85° HOLD OPEN	703 H
	90° HOLD OPEN		10-5/8	8-1/2		90° HOLD OPEN	
	95° HOLD OPEN		9-7/8	8-1/2		95° HOLD OPEN	
	100° HOLD OPEN		9-3/16	8-1/2		100° HOLD OPEN	
	105° HOLD OPEN		8-1/2	8-1/2		105° HOLD OPEN	
	110° HOLD OPEN		7-7/8	8-1/2		110° HOLD OPEN	

- a. All 4-1/2" WIDE HINGE and 3/4" OFFSET PIVOT dimensions are for 1-3/4" thick doors. For additional door thicknesses consult DORMA's Technical Services department.
- b. DEAD STOP ONLY is the maximum degree to which the door will open when the shock spring is fully compressed.
- c. HOLD OPEN is the degree the door is held open. The shock absorber spring compresses while the door moves to the dead stop position which is several degrees greater (approximately 8-9 degrees).
- d. All values are in inches.

