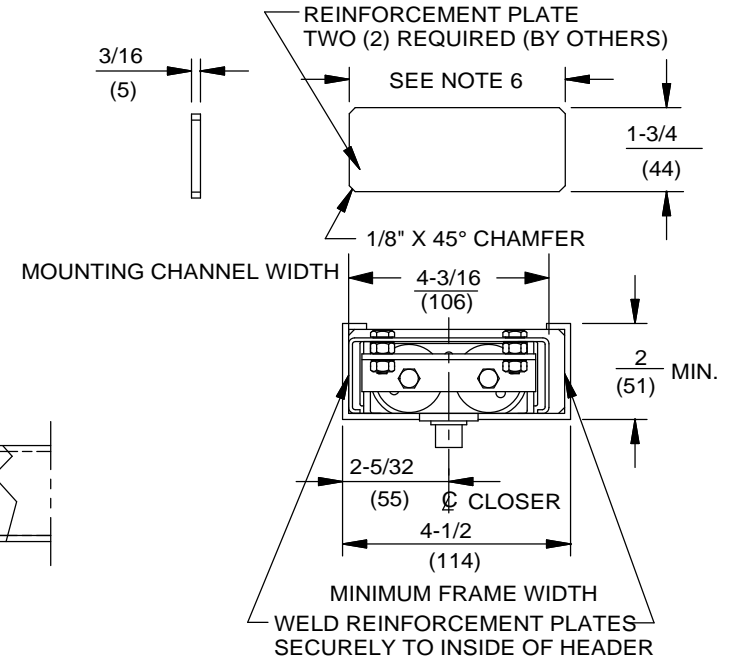
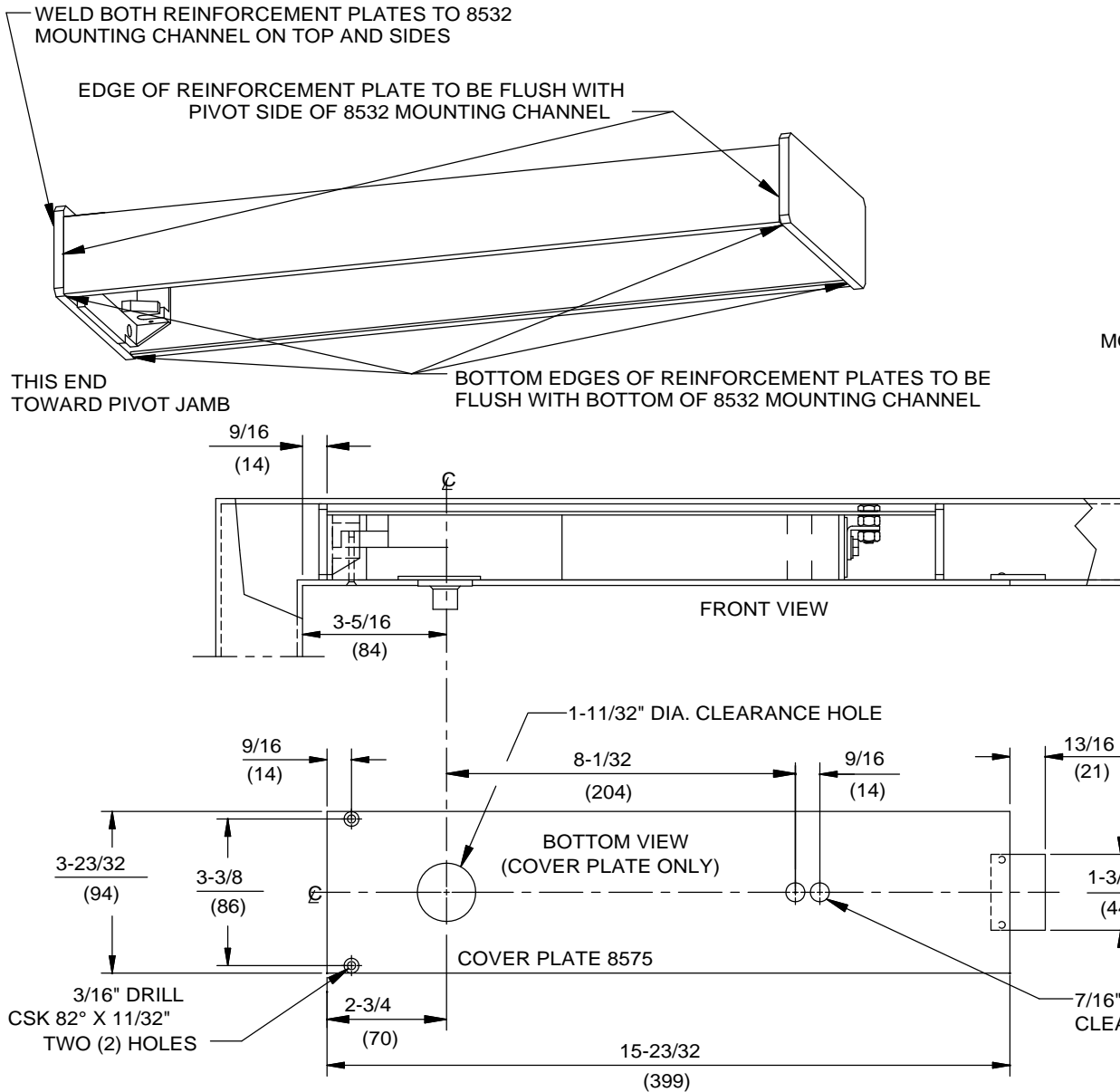


Always consult Dorma's web site for latest template at www.dorma-usa.com or call 1-800-523-8483.

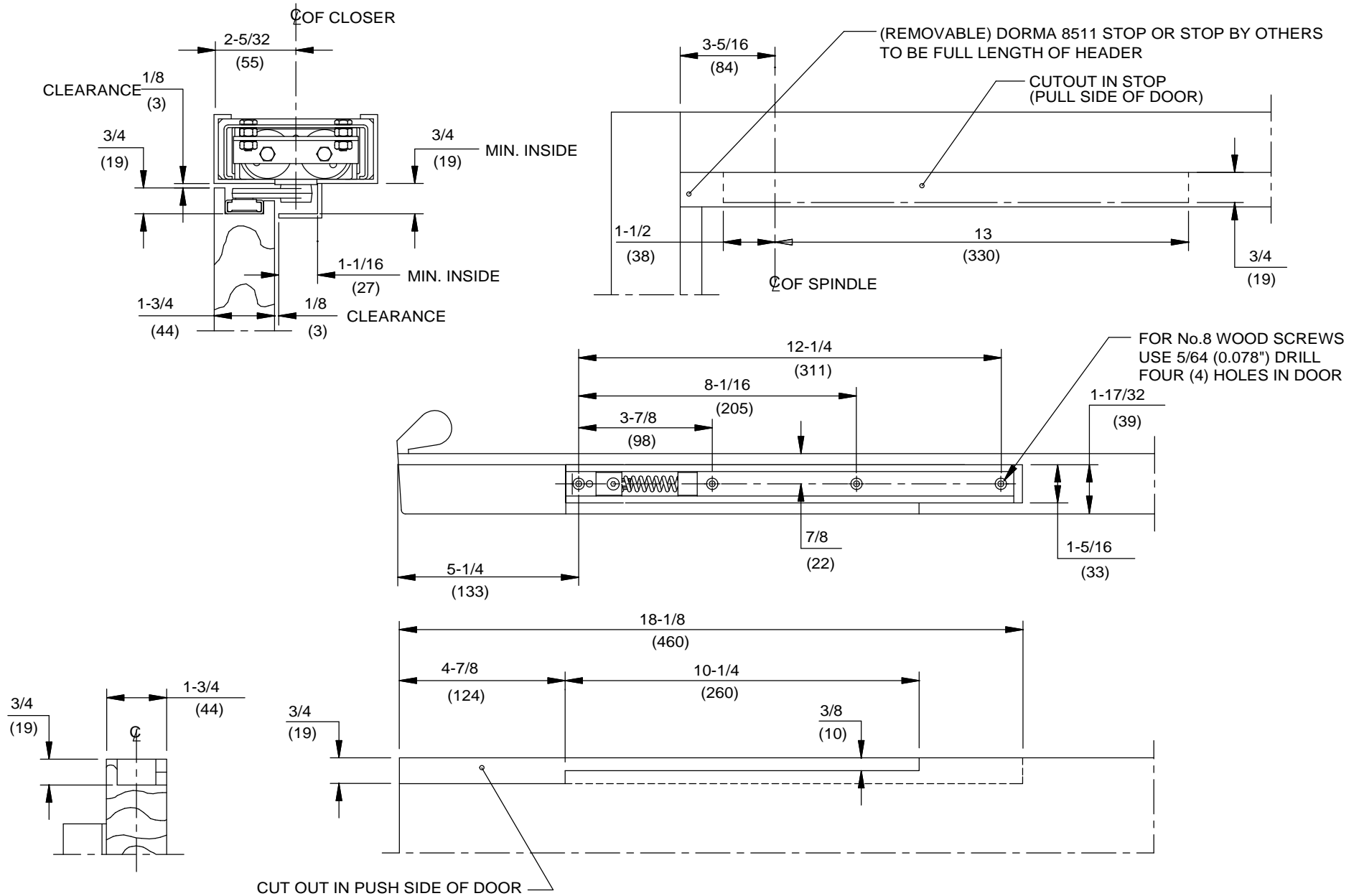


- NOTE:
- DO NOT SCALE DRAWING.
 - DIMENSIONS ARE IN INCHES/(MM).
 - MINIMUM HEADER SIZE 2" X 4-1/2".
 - CUT OUT FOR COVER PLATE 3-3/4" X 15-3/4".
 - CLEARANCE BETWEEN HEADER AND DOOR 1/8".
 - WIDTH OF REINFORCEMENT PLATE TO BE A SLIP FIT INTO INSIDE OF HEADER.
 - 90°HO MODELS NOMINAL HOLD OPEN AT 88°. 105°HO MODELS NOMINAL HOLD OPEN AT 103°.
 - AUXILIARY STOP REQUIRED COINCIDING WITH DEADSTOP ON RTS CLOSER.

DOOR CLOSER MODEL: RTS SERIES PACKAGE 28, WOOD DOOR AND STEEL FRAME PREPARATION, DOOR HUNG ON 3/4" OFFSET PIVOTS
 No. 8532 MOUNTING CHANNEL, No. 8812 TRACK ARM, No. 8575 COVER PLATE



DORMA Door Controls
 Reamstown, PA 17567



Always consult Dorma's web site for latest template at www.dorma-usa.com or call 1-800-523-8483.



DORMA Door Controls
 Reamstown, PA 17567