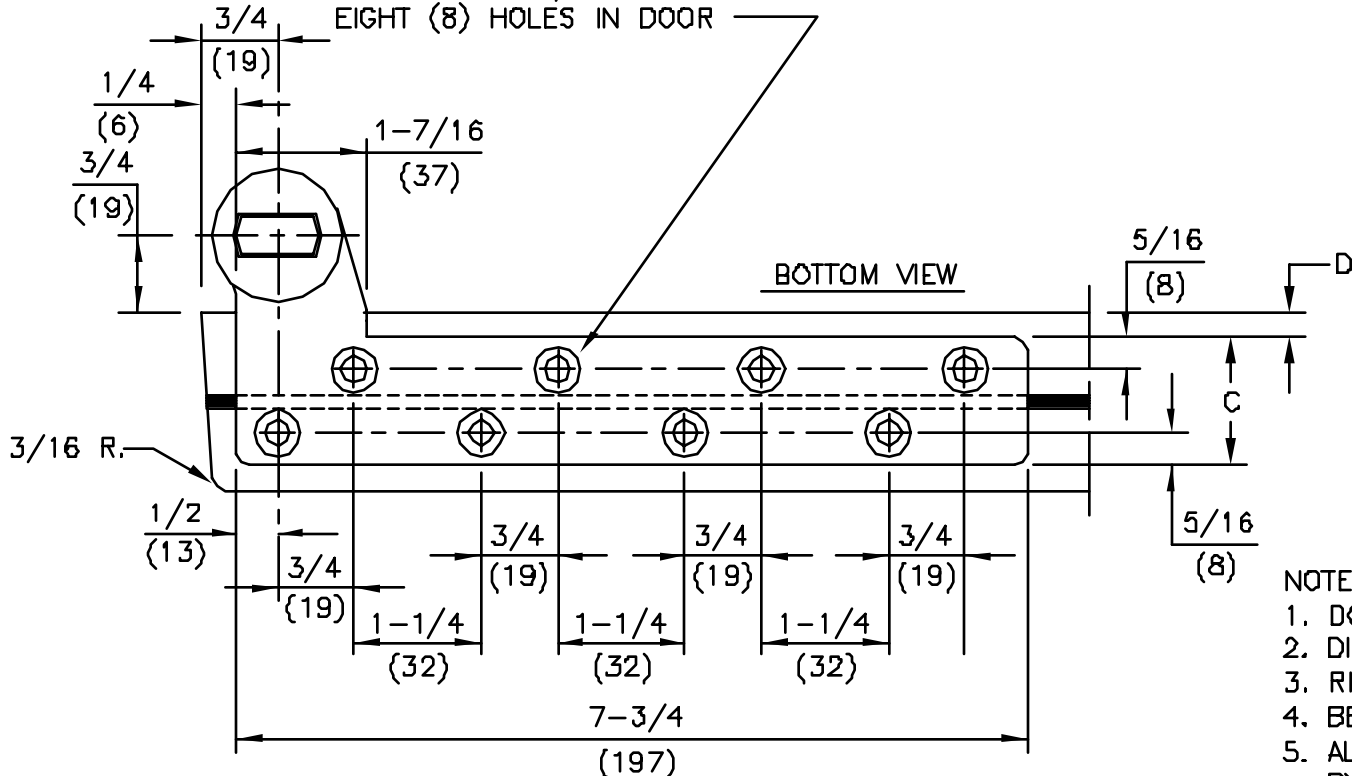


FOR 1/4-20 MACHINE SCREWS USE No.7 DRILL  
 FOR No.14 WOOD SCREWS USE 5/32" DRILL  
 EIGHT (8) HOLES IN DOOR

No.	REVISIONS	DATE
-----	-----------	------

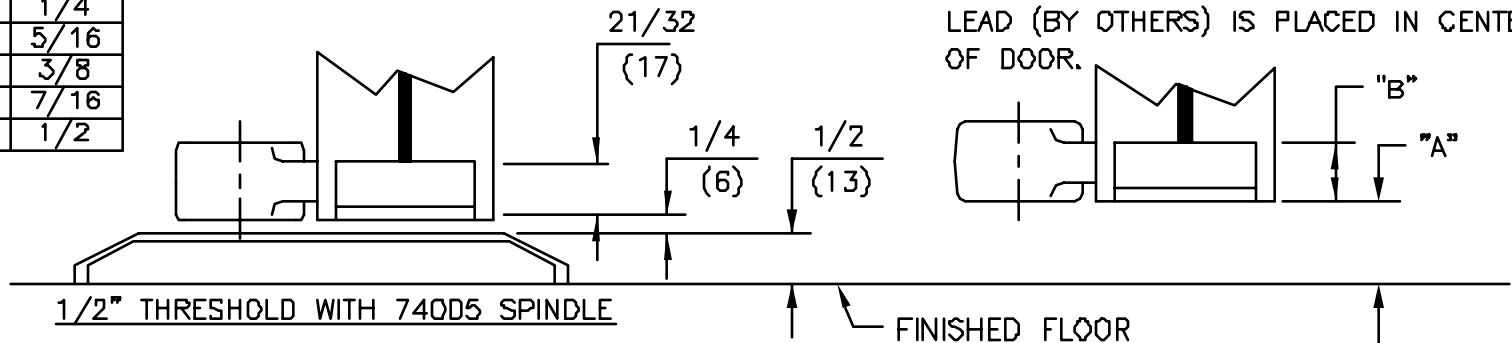


SPINDLE EXT.	"A" CLEARANCE	"B" MORTISE DEPTH
74003	3/8"	25/32"
74003	9/16"	19/32"
STD.74005	3/4"	19/32"
74007	7/8"	19/32"
74010	1"	19/32"
74012	1-1/16"	19/32"
74015	1-1/8"	19/32"
74020	1-3/8"	19/32"
74025	1-9/16"	19/32"
74030	1-3/4"	19/32"

NOTES

1. DO NOT SCALE DRAWING.
2. DIMENSIONS ARE IN INCHES/(MM).
3. RIGHT HAND DOOR SHOWN.
4. BEVEL HEEL EDGE OF DOOR 1/8" IN 2".
5. ALL NECESSARY REINFORCEMENT FOR ARM BY OTHERS.
6. FOR DOOR THICKNESS NOT LISTED USE NEXT SIZE NARROWER ARM.
7. TEMPLATE BASED ON THE ASSUMPTION THAT LEAD (BY OTHERS) IS PLACED IN CENTER OF DOOR.

DOOR THICKNESS	DIM "C"	DIM "D"
1-3/4"	1-1/4"	1/4"
2"	1-3/8"	5/16"
2-1/4"	1-1/2"	3/8"
2-1/2"	1-5/8"	7/16"
3"	2"	1/2"



ITEM No. 75343, 75343-2, 75343-2 1/4, 75343-2 1/2, 75343-3  
 3/4" OFFSET HEAVY DUTY BOTTOM ARM FOR LEAD LINED OR EXTRA HEAVY DOORS  
 FOR NON-FIRE OR 3HR. RATED DOORS  
 FOR USE WITH 7471HD FLOOR BEARING



DORMA Architectural Hardware  
 REAMSTOWN, PENNSYLVANIA 17667  
 TEMPLATE No. LM-64