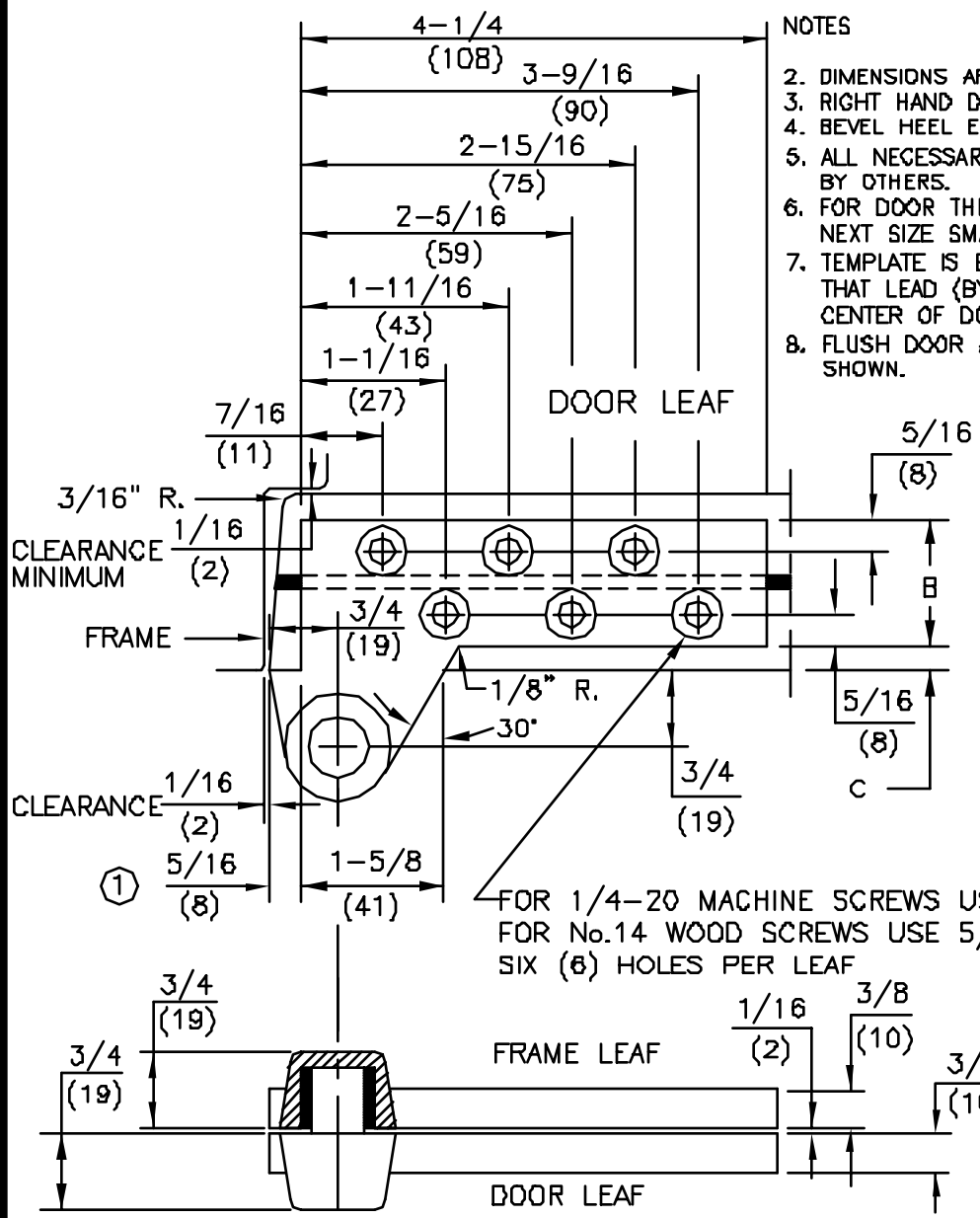
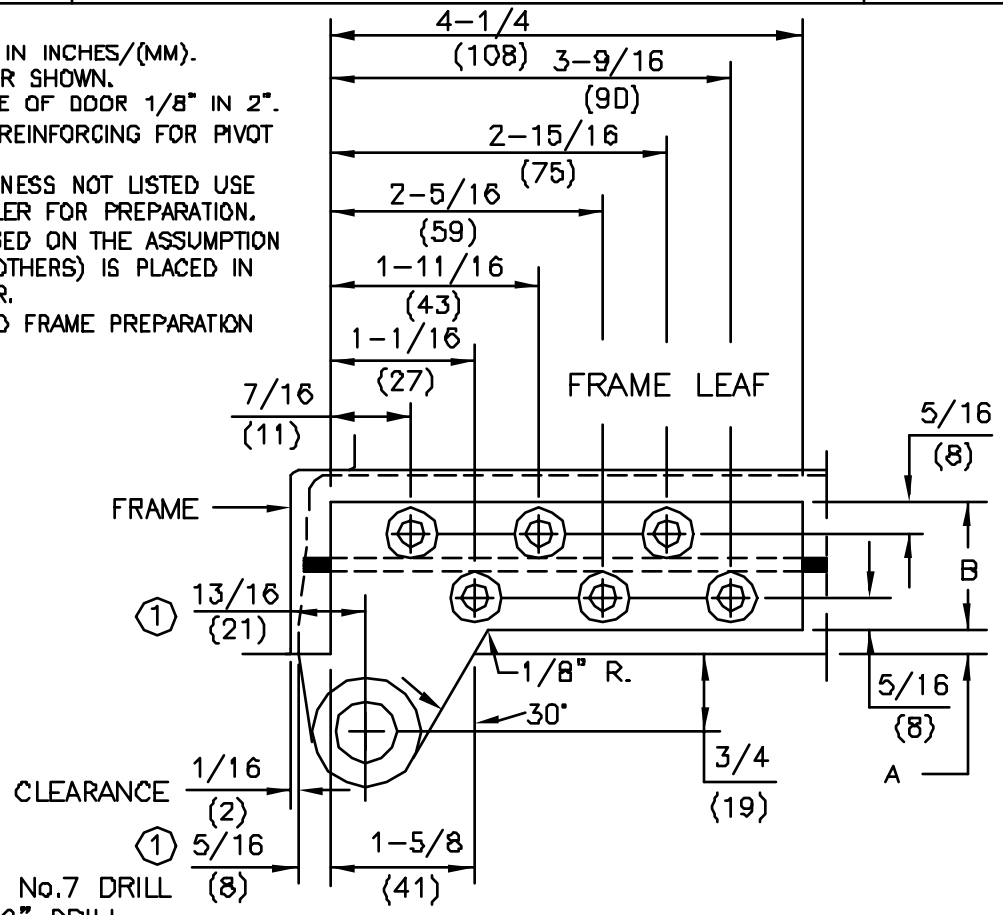


No.	REVISIONS	DATE
1	CHANGED DIMENSION 7/16" TO 5/16" AND ADDED 13/16" DIM.	9/24/92



NOTES

2. DIMENSIONS ARE IN INCHES/(MM).
3. RIGHT HAND DOOR SHOWN.
4. BEVEL HEEL EDGE OF DOOR 1/8" IN 2".
5. ALL NECESSARY REINFORCING FOR PIVOT BY OTHERS.
6. FOR DOOR THICKNESS NOT LISTED USE NEXT SIZE SMALLER FOR PREPARATION.
7. TEMPLATE IS BASED ON THE ASSUMPTION THAT LEAD (BY OTHERS) IS PLACED IN CENTER OF DOOR.
8. FLUSH DOOR AND FRAME PREPARATION SHOWN.



FOR 1/4-20 MACHINE SCREWS USE No.7 DRILL
 FOR No.14 WOOD SCREWS USE 5/32" DRILL
 SIX (6) HOLES PER LEAF

FOR FLUSH DOOR AND FRAME			
DOOR THICKNESS	DIM "A"	DIM "B"	DIM "C"
1-3/4"	1/4	1-1/4	1/4
2"	5/16	1-3/8	5/16
2-1/4"	3/8	1-1/2	3/8
2-1/2"	7/16	1-5/8	7/16
3"	1/2	2	1/2

FOR 1/8" INSET DOOR			
DOOR THICKNESS	DIM "A"	DIM "B"	DIM "C"
1-3/4"	3/8	1-1/4	1/4
2"	7/16	1-3/8	5/16
2-1/4"	1/2	1-1/2	3/8
2-1/2"	9/16	1-5/8	7/16
3"	5/8	2	1/2

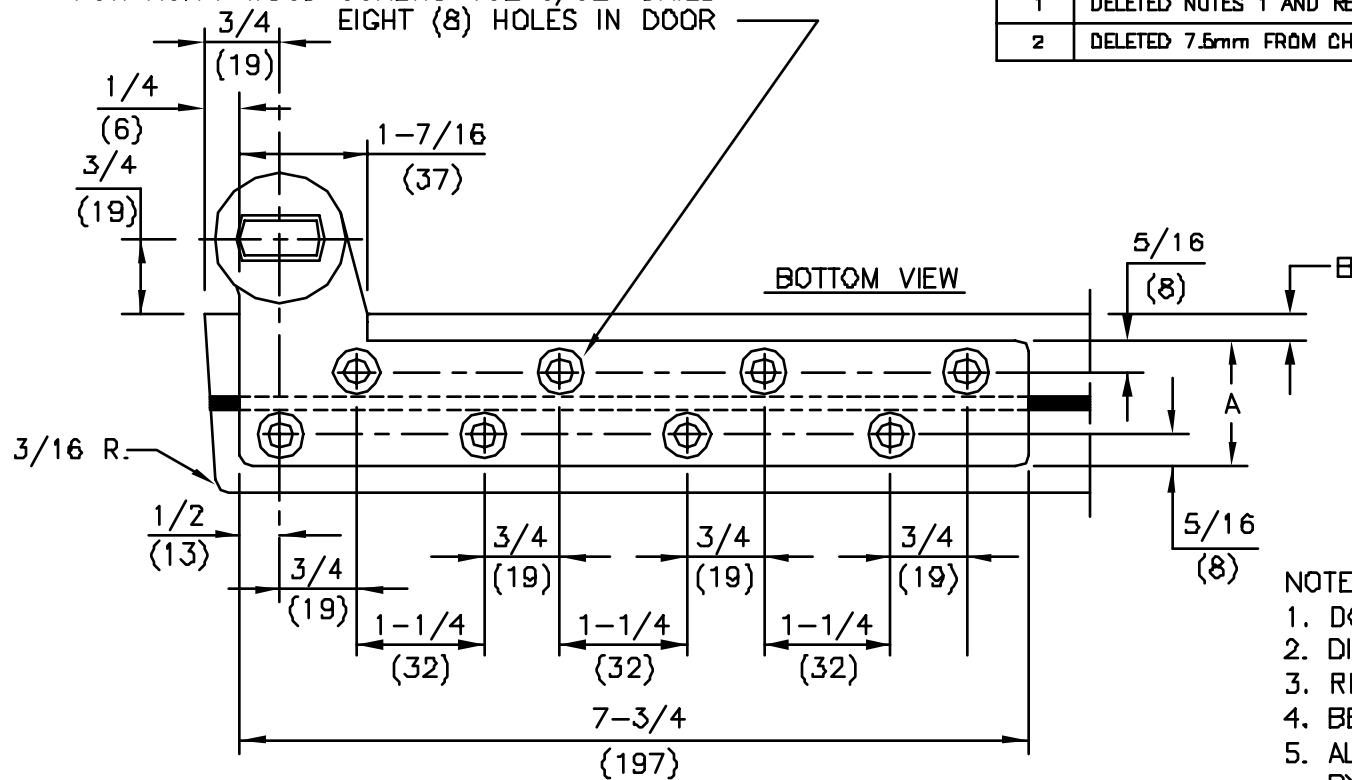
ALL SERIES: [75140, 75142, 75143 (DOOR FLUSH WITH FRAME) NON-HANDED],
 [75140 5/8, 75142 5/8, 75143 5/8 (DOOR INSET 1/8" FROM FRAME) HANDED]
 3/4" OFFSET FULL MORTISE TOP PIVOT
 FOR LEAD LINED OR EXTRA HEAVY DOORS



DORMA Architectural Hardware
 REAVISTOWN, PENNSYLVANIA 17567
 TEMPLATE No. LM-36 (1)

FOR 1/4-20 MACHINE SCREWS USE No.7 DRILL
 FOR No.14 WOOD SCREWS USE 5/32" DRILL
 EIGHT (8) HOLES IN DOOR

No.	REVISIONS	DATE
1	DELETED NOTES 1 AND REVISED NOTE 6. MODIFIED ILLUSTRATIONS.	3/6/82
2	DELETED 7.5mm FROM CHART	3/19/92

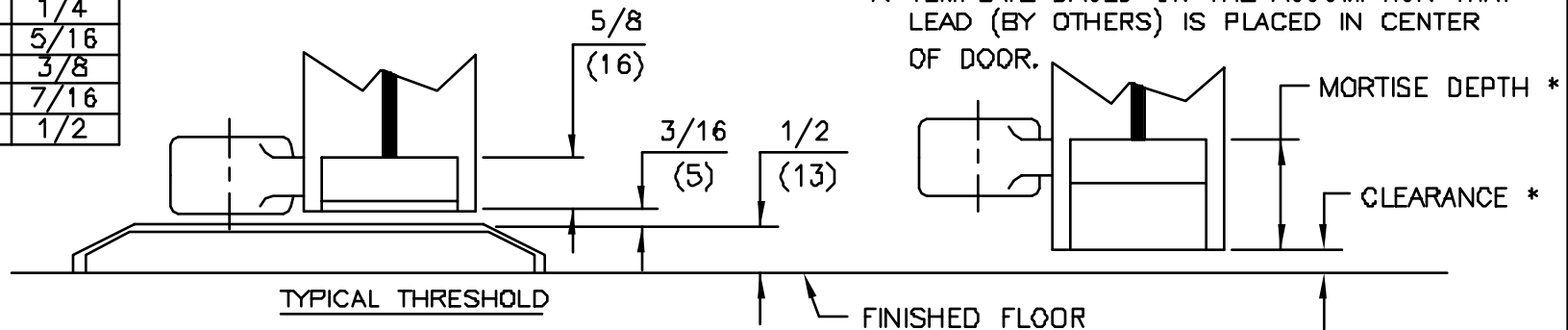


SPINDLE EXT.	CLEARANCE *	MORTISE DEPTH *
STD.	1/4"	1-1/16"
STD.	7/16"	7/8"
STD.	11/16"	5/8"
5mm	7/8"	5/8"
10mm	1-1/16"	5/8"
15mm	1-1/4"	5/8"
20mm	1-7/16"	5/8"
25mm	1-5/8"	5/8"
30mm	1-7/8"	5/8"
35mm	2-1/16"	5/8"
40mm	2-1/4"	5/8"
45mm	2-7/16"	5/8"
50mm	2-5/8"	5/8"

NOTES

- DO NOT SCALE DRAWING.
- DIMENSIONS ARE IN INCHES/(MM).
- RIGHT HAND DOOR SHOWN.
- BEVEL HEEL EDGE OF DOOR 1/8" IN 2".
- ALL NECESSARY REINFORCEMENT FOR ARM BY OTHERS.
- FOR DOOR THICKNESS NOT LISTED USE NEXT SIZE NARROWER ARM.
- TEMPLATE BASED ON THE ASSUMPTION THAT LEAD (BY OTHERS) IS PLACED IN CENTER OF DOOR.

DOOR THICKNESS	DIM "A"	DIM "B"
1-3/4"	1-1/4"	1/4"
2"	1-3/8"	5/16"
2-1/4"	1-1/2"	3/8"
2-1/2"	1-5/8"	7/16"
3"	2"	1/2"

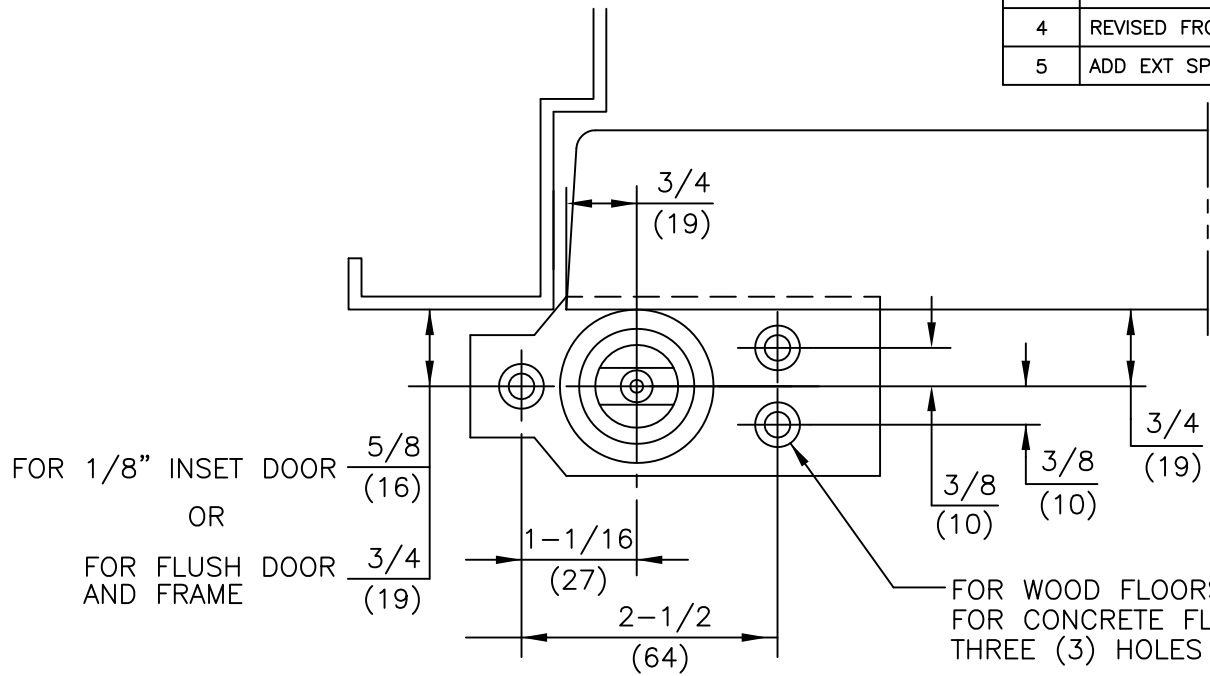


ITEM No. 75343, 75343-2, 75343-2 1/4, 75343-2 1/2, 75343-3
 3/4" OFFSET HEAVY-DUTY BOTTOM ARM
 FOR LEAD LINED OR EXTRA HEAVY DOORS
 FOR USE WITH 7471K FLOOR BEARING



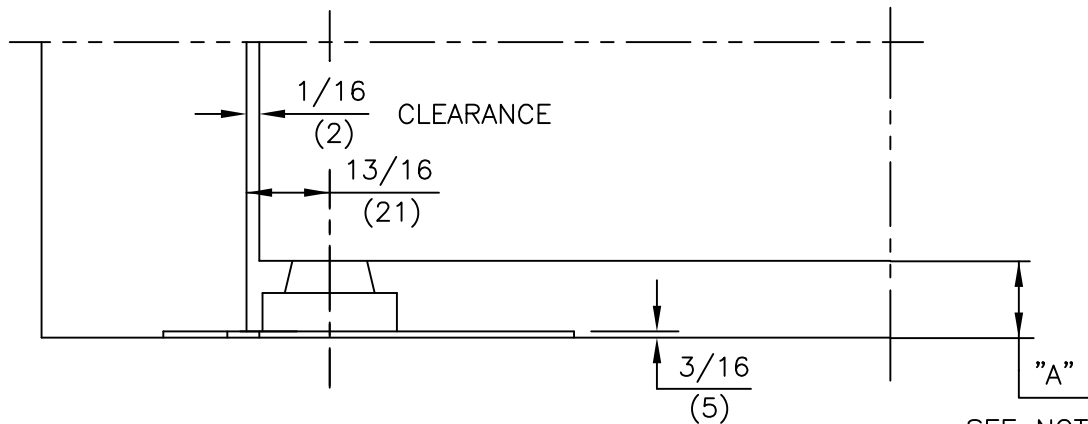
DORMA Architectural Hardware
 REAVISTOWN, PENNSYLVANIA 17567
 TEMPLATE No. LM-19 ②

No.	REVISIONS	DATE
2	DELETED NOTE 1 AND REVISED NOTE 6. DOOR SHOWN FLUSH, ADDED FLUSH AND 1/8" INSET DIMENSIONS.	3/6/92
3	DELETED CHART AND NOTE 4	3/19/92
4	REVISED FROM 5/16" DRILL TO 1/4" DRILL 1" DEEP	8/2/04
5	ADD EXT SPINDLE CHART	2/26/19



NOTES:

- DO NOT SCALE DRAWING.
- DIMENSIONS ARE IN INCHES\MM.
- RIGHT HAND DOOR SHOWN.
- FLUSH DOOR AND FRAME PREPARATION SHOWN.
- DIMENSION "A" IS DISTANCE FROM BOTTOM OF PIVOT TO BOTTOM OF ARM. WHEN BOTTOM ARM IS INSTALLED TO THE STANDARD TEMPLATE, THIS IS ALSO EQUAL TO THE BOTTOM DOOR CLEARANCE.



SEE NOTE 5

SPINDLE SIZE	DIM. "A"
STANDARD	$11\frac{1}{16}$ (17)
5MM EXT.	$7\frac{7}{8}$ (22)
10MM EXT.	$1-\frac{1}{16}$ (27)
15MM EXT.	$1-\frac{1}{4}$ (32)
20MM EXT.	$1-\frac{7}{16}$ (37)
25MM EXT.	$1-\frac{5}{8}$ (42)
30MM EXT.	$1-\frac{7}{8}$ (47)
35MM EXT.	$2-\frac{1}{16}$ (52)
40MM EXT.	$2-\frac{1}{4}$ (57)
45MM EXT.	$2-\frac{7}{16}$ (62)

ITEM No.7471K
3/4" OFFSET FLOOR BEARING INSTALLATION
FOR USE WITH 75323 AND 75343 BOTTOM ARM

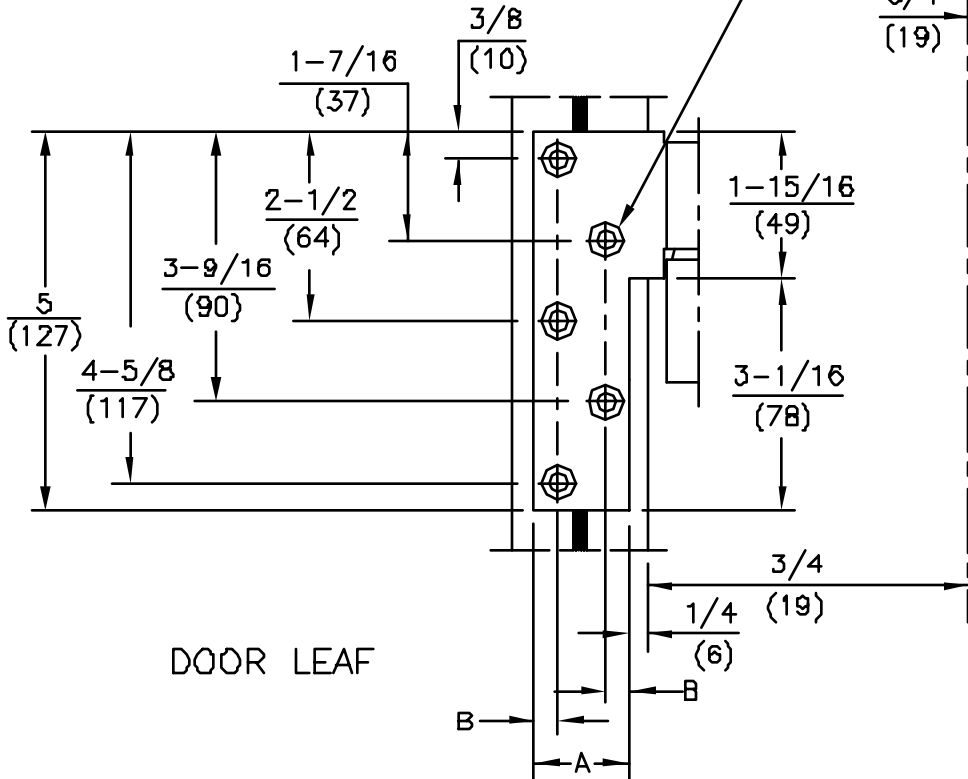


DORMA Architectural Hardware
REAMSTOWN, PENNSYLVANIA 17567
TEMPLATE No. LM-30

NOTES

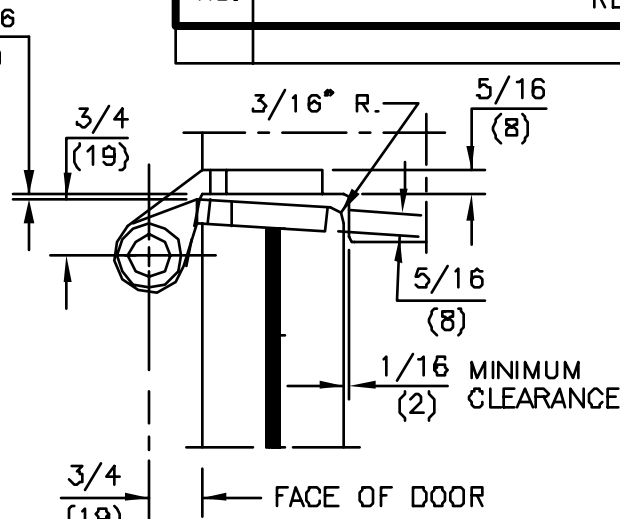
1. DO NOT SCALE DRAWING.
2. DIMENSIONS ARE IN INCHES/(MM).
3. RIGHT HAND DOOR SHOWN.
4. BEVEL HEEL EDGE OF DOOR 1/8" IN 2".
5. ALL NECESSARY REINFORCEMENT FOR PIVOT BY OTHERS.
6. FOR DOOR THICKNESS NOT LISTED USE NEXT SIZE SMALLER FOR PREPARATION.
7. TEMPLATE IS BASED ON THE ASSUMPTION THAT LEAD (BY OTHERS) IS PLACED IN CENTER OF DOOR.
8. FLUSH DOOR AND FRAME PREPARATION SHOWN. FOR 1/4-20 MACHINE SCREWS USE No.7 DRILL FOR No.14 WOOD SCREWS USE 5/32" DRILL

5 (FIVE) HOLES IN EACH LEAF



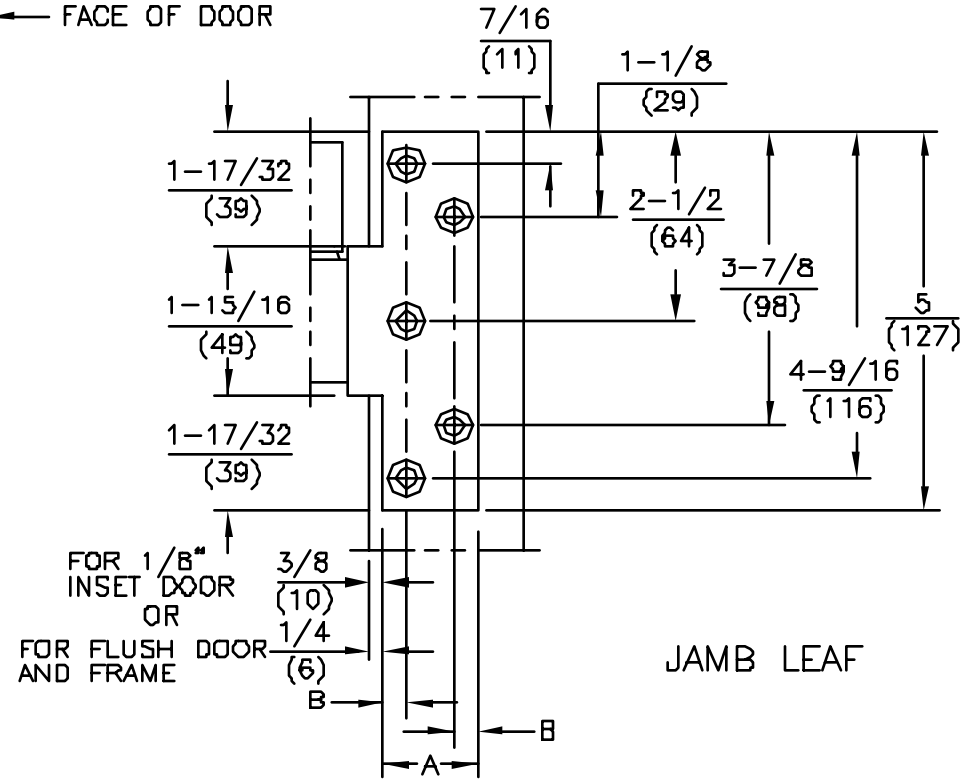
DOOR LEAF

No.	REVISIONS	DATE



DOOR THICKNESS	DIM "A"	DIM "B"
1-3/4"	1-1/4	1/4
2"	1-1/2	5/16
2-1/4"	1-3/4	5/16
2-1/2"	2	5/16
3"	2-7/16	5/16

FACE OF DOOR



JAMB LEAF

ALL SERIES: 75240, 75242, 75243
 3/4" OFFSET FULL MORTISE
 INTERMEDIATE PIVOT (HANDED)
 FOR LEAD LINED OR EXTRA HEAVY DOORS



DORMA Architectural Hardware
 REAMSTOWN, PENNSYLVANIA 17567
 TEMPLATE No. LM-37