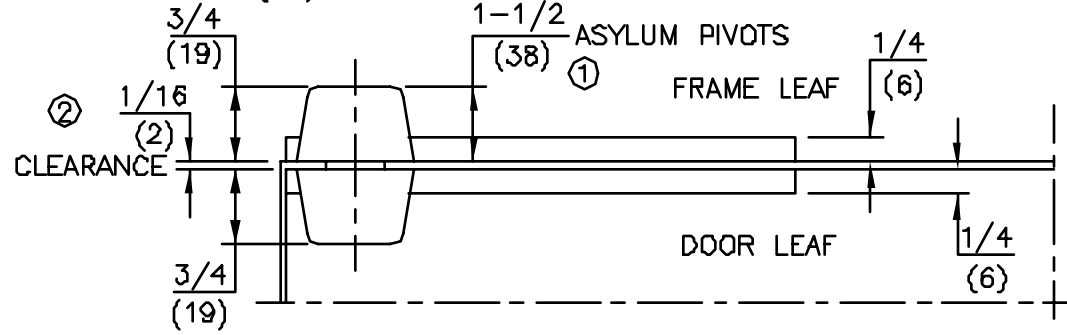
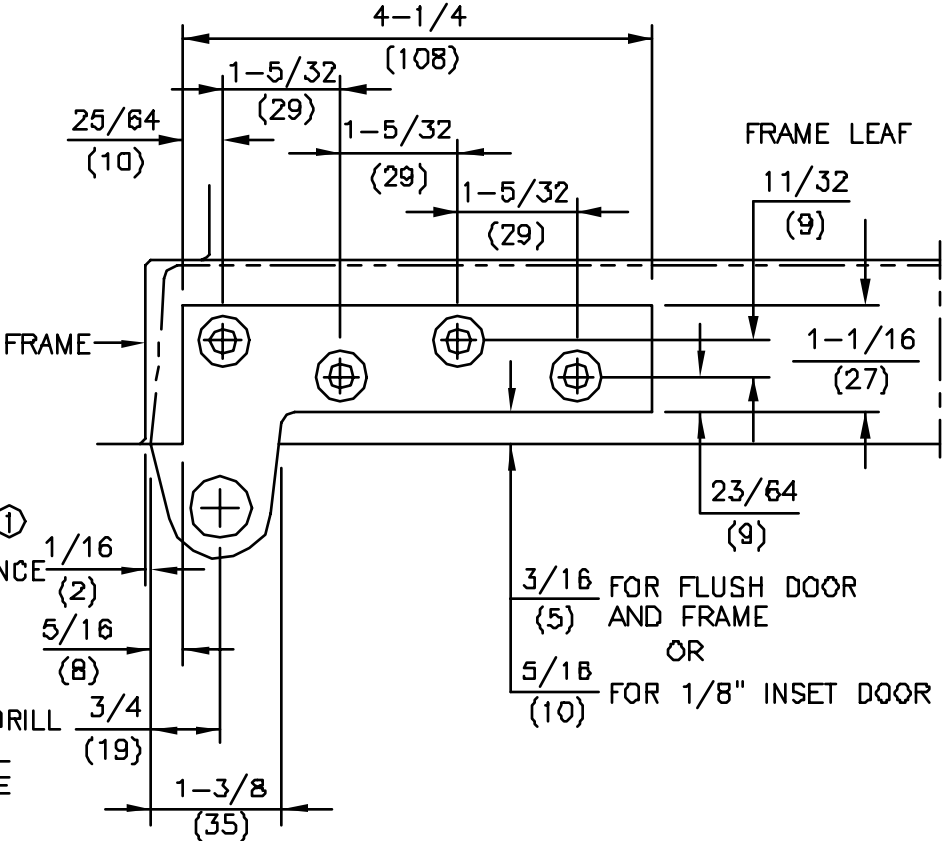
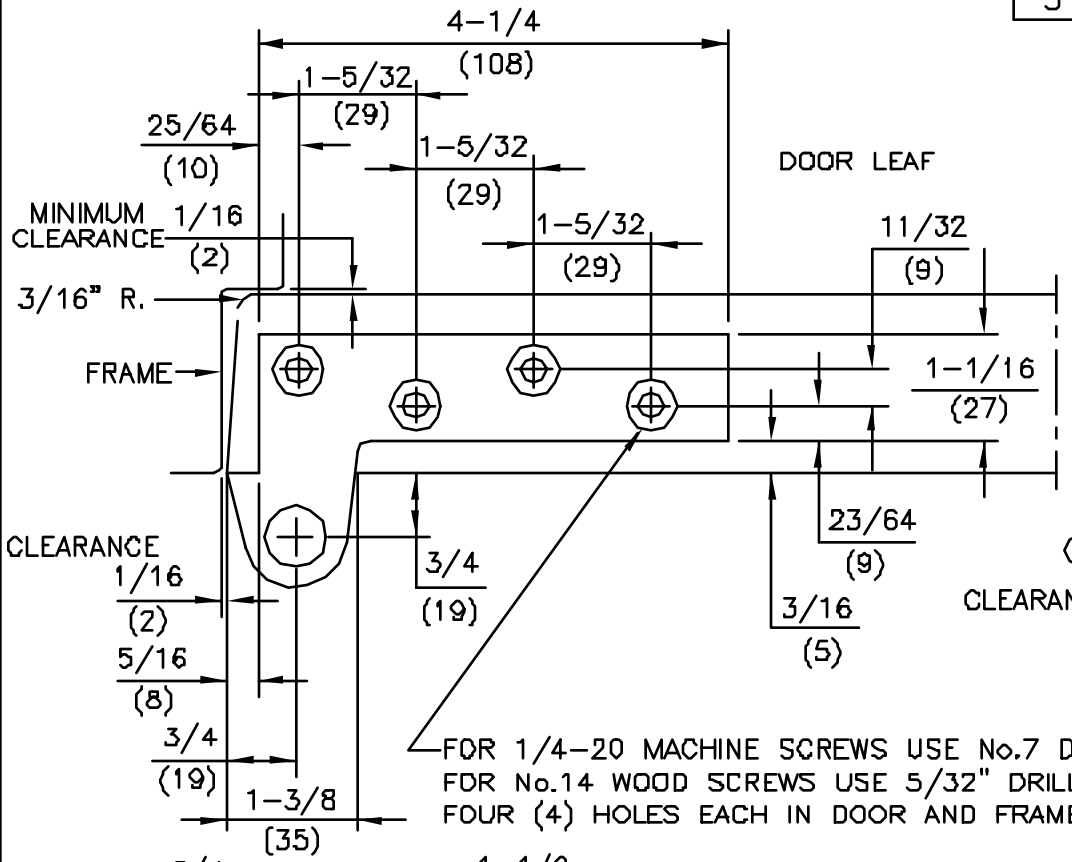


No.	REVISIONS	DATE
2	ADDED 1/16" CLEARANCE DIMENSION	3/5/93
3	REVISED TO TAKE OUT ASYLUM	4/11/00



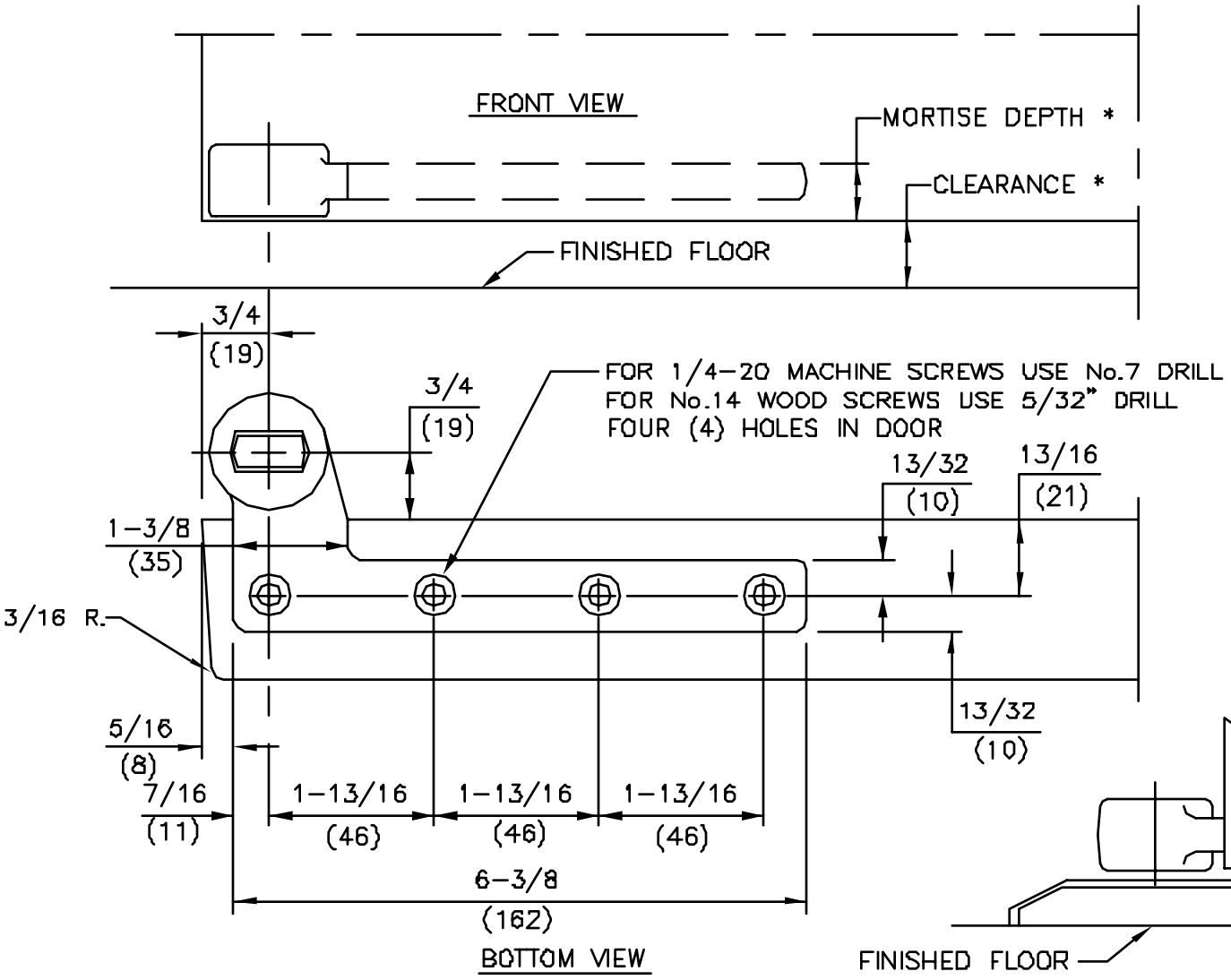
- NOTES
1. DO NOT SCALE DRAWING.
  2. DIMENSIONS ARE IN INCHES/(MM).
  3. RIGHT HAND DOOR SHOWN.
  4. BEVEL HEEL EDGE OF DOOR 1/8" IN 2".
  5. ALL NECESSARY REINFORCING FOR PIVOT BY OTHERS.
  6. FLUSH DOOR & FRAME STANDARD. 1/8" INSET DOORS REQUIRE PIVOT WITH 5/8" SUFFIX.

ITEM No. [75120, 75122, 75133 (DOOR FLUSH WITH FRAME) NON-HANDED]  
 [75120 5/8, 75122 5/8, 75133 5/8 (DOOR INSET 1/8" FROM FRAME) HANDED]  
 3/4" OFFSET FULL MORTISE TOP PIVOT ③



DORMA Architectural Hardware  
 REAVISTOWN, PENNSYLVANIA 17567  
 TEMPLATE No. LM-34 ③

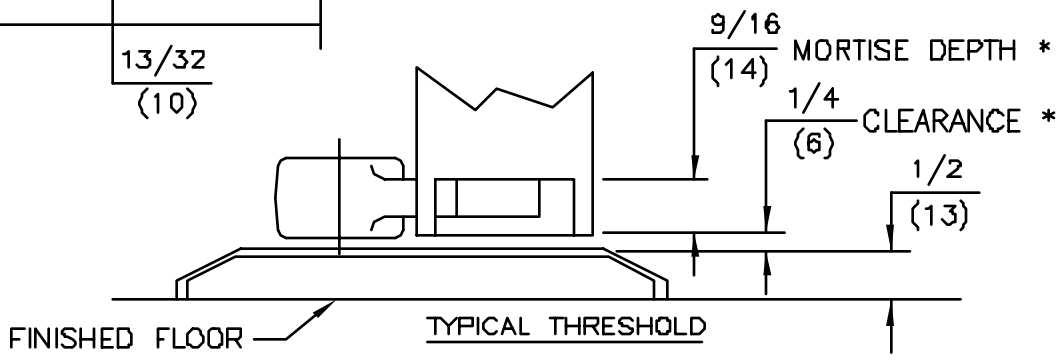
No.	REVISIONS	DATE
1	DELETED NOTE 1, REVISED CHART	3/19/92



- NOTES ①
- DO NOT SCALE DRAWING.
  - DIMENSIONS ARE IN INCHES/(MM).
  - RIGHT HAND DOOR SHOWN.
  - BEVEL HEEL EDGE OF DOOR 1/8" IN 2".
  - ALL NECESSARY REINFORCEMENT FOR ARM BY OTHERS.

①

SPINDLE EXT.	CLEARANCE *	MORTISE DEPTH *
STD.	5/16"	1"
STD.	1/2"	13/16"
STD.	3/4"	9/16"
5mm	15/16"	9/16"
10mm	1-1/8"	9/16"
15mm	1-5/16"	9/16"
20mm	1-1/2"	9/16"
25mm	1-11/16"	9/16"
30mm	1-15/16"	9/16"
35mm	2-1/8"	9/16"
40mm	2-5/16"	9/16"
45mm	2-1/2"	9/16"
50mm	2-11/16"	9/16"

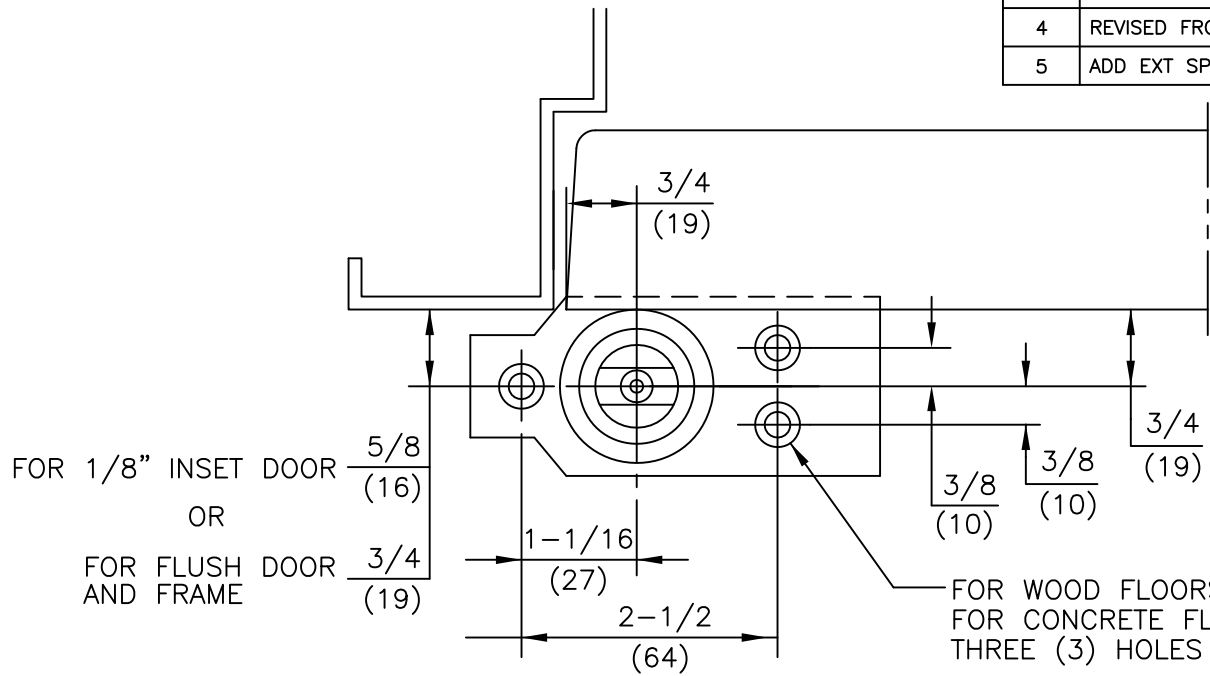


ITEM No. 75323  
 3/4" OFFSET STANDARD BOTTOM ARM  
 FOR NON-FIRE OR 3 HR. RATED DOORS  
 FOR USE WITH 7471K FLOOR BEARING



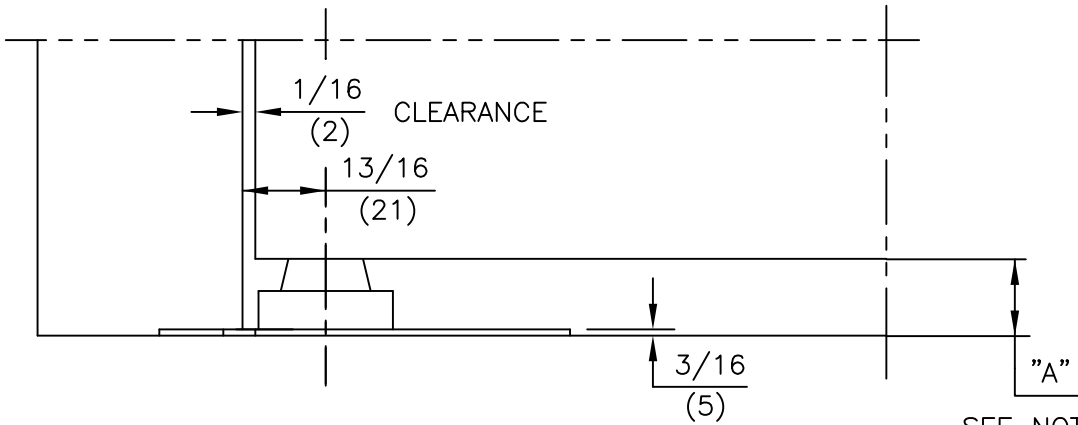
DORMA Architectural Hardware  
 REAVISTOWN, PENNSYLVANIA 17567  
 TEMPLATE No. LM-20 ①

No.	REVISIONS	DATE
2	DELETED NOTE 1 AND REVISED NOTE 6. DOOR SHOWN FLUSH, ADDED FLUSH AND 1/8" INSET DIMENSIONS.	3/6/92
3	DELETED CHART AND NOTE 4	3/19/92
4	REVISED FROM 5/16" DRILL TO 1/4" DRILL 1" DEEP	8/2/04
5	ADD EXT SPINDLE CHART	2/26/19



- NOTES:
- DO NOT SCALE DRAWING.
  - DIMENSIONS ARE IN INCHES\MM.
  - RIGHT HAND DOOR SHOWN.
  - FLUSH DOOR AND FRAME PREPARATION SHOWN.
  - DIMENSION "A" IS DISTANCE FROM BOTTOM OF PIVOT TO BOTTOM OF ARM. WHEN BOTTOM ARM IS INSTALLED TO THE STANDARD TEMPLATE, THIS IS ALSO EQUAL TO THE BOTTOM DOOR CLEARANCE.

FOR WOOD FLOORS USE 1/8" DRILL  
FOR CONCRETE FLOORS USE 1/4" DRILL 1" DEEP  
THREE (3) HOLES



SPINDLE SIZE	DIM. "A"
STANDARD	11/16 (17)
5MM EXT.	7/8 (22)
10MM EXT.	1-1/16 (27)
15MM EXT.	1-1/4 (32)
20MM EXT.	1-7/16 (37)
25MM EXT.	1-5/8 (42)
30MM EXT.	1-7/8 (47)
35MM EXT.	2-1/16 (52)
40MM EXT.	2-1/4 (57)
45MM EXT.	2-7/16 (62)

SEE NOTE 5

ITEM No.7471K  
3/4" OFFSET FLOOR BEARING INSTALLATION  
FOR USE WITH 75323 AND 75343 BOTTOM ARM

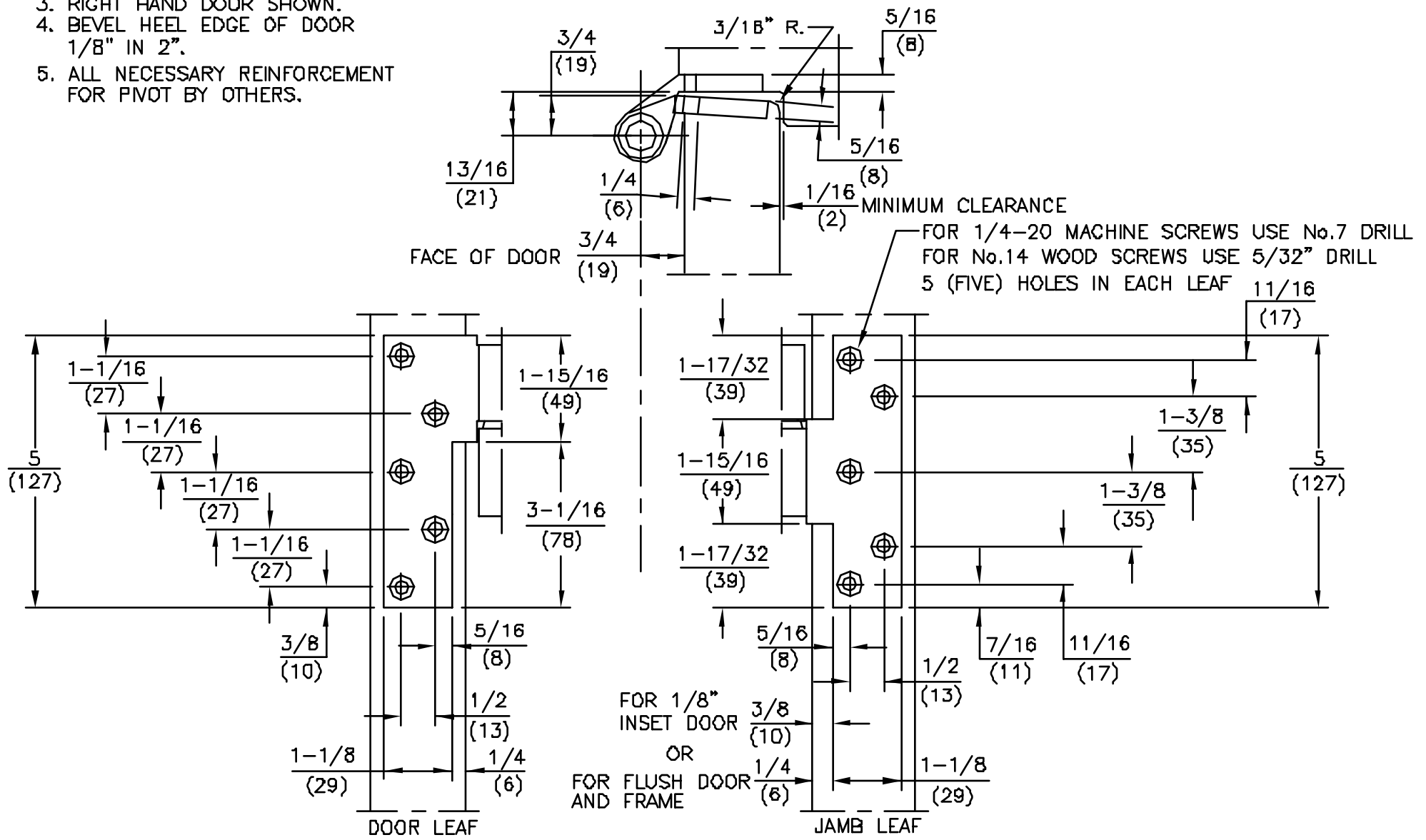


**DORMA Architectural Hardware**  
REAMSTOWN, PENNSYLVANIA 17567  
TEMPLATE No. LM-30

No.	REVISIONS	DATE
1	REVISED TO TAKE OUT ASYLUM	4/11/00

NOTES

1. DO NOT SCALE DRAWING.
2. DIMENSIONS ARE IN INCHES/(MM).
3. RIGHT HAND DOOR SHOWN.
4. BEVEL HEEL EDGE OF DOOR 1/8" IN 2".
5. ALL NECESSARY REINFORCEMENT FOR PIVOT BY OTHERS.



ITEM No. 75220, 75222, 75233  
 3/4" OFFSET FULL MORTISE  
 INTERMEDIATE PIVOT (HANDED) ①



DORMA Architectural Hardware  
 REAVISTOWN, PENNSYLVANIA 17567  
 TEMPLATE No. LM-35 ①