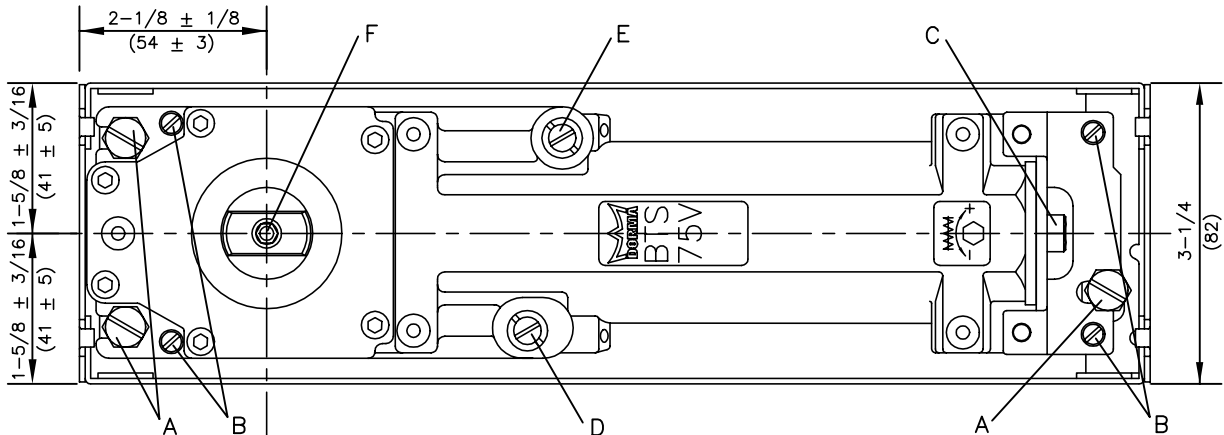
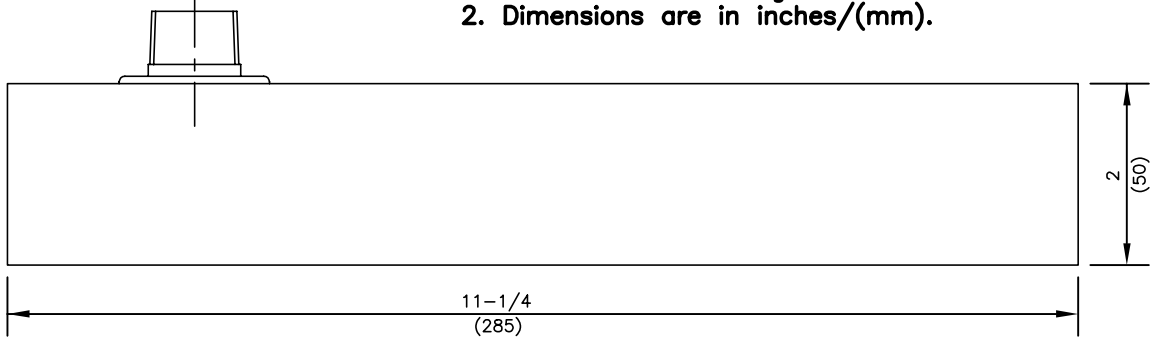


BTS 75V, BTS 75V BF

WARNING: Some information may vary depending on the package being used. Reference specific installation instructions for details.



Notes: 1. Do not scale drawing.
2. Dimensions are in inches/(mm).



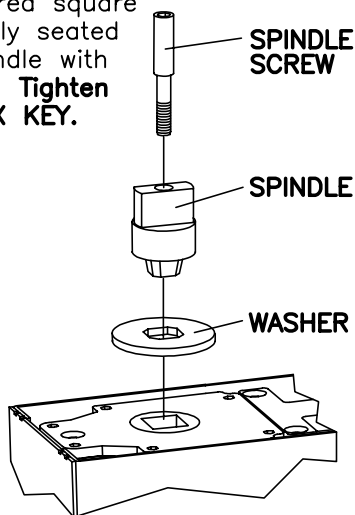
BTS 75V

- A – Fastening screws
- B – Height adjustment screws
- C – Spring tension adjustment nut
- D – Closing speed adjustment valve (175°–15°)
- E – Closing speed adjustment valve (15°–0°)
- F – Spindle screw

BTS 75V BF

- A – Fastening screws
- B – Height adjustment screws
- C – Spring tension adjustment nut
- D – Closing speed (delayed action) adjustment valve (175°–70°)
- E – Closing speed adjustment valve (70°–0°)
- F – Spindle screw

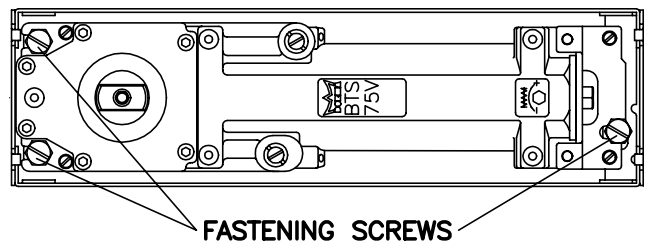
1 Slide washer over tapered square end of spindle until fully seated in groove. Fasten spindle with spindle screw provided. **Tighten securely with 5mm HEX KEY.**



CRITICAL
WASHER MUST BE INSTALLED.

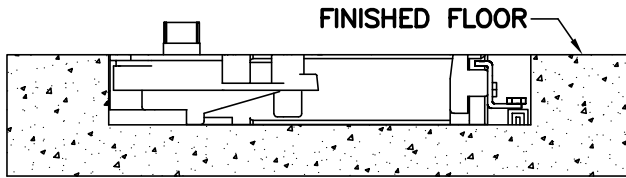
2 Replacing closer in existing installation: Remove fastening screws and replace old closer with new closer. Spindle center line must be accurately located for the pivot point of the door. Reinstall and tighten fastening screws.

New installation: Center closer in cement case and tighten fastening screws.



3 (New installations only)

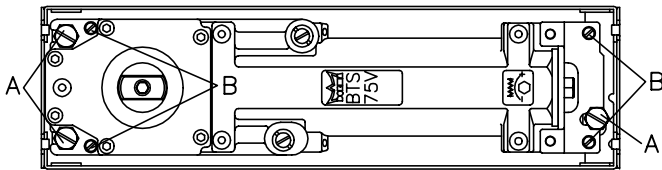
Top of cement case must be flush with finished floor. Cement case must be level and installed parallel to frame. Spindle center line must be accurately located. Grout cement case in place.



4 REINSTALL DOOR, THEN PROCEED TO STEP #5.

5 Adjust bottom door clearances. (If necessary)

Closer can be raised approximately 5/32" within the cement case. Loosen fastening screws "A". Turn height adjustment screws "B" clockwise until desired height is obtained. **Closer must remain level!** Re-tighten fastening screws "A". **If more clearance is necessary, change spindle to appropriate size.**



6 Adjust closing speed.

BTS 75V



VALVE "D"— controls closing speed from approx. 175°–15°. (Opening conditions may limit maximum opening.)

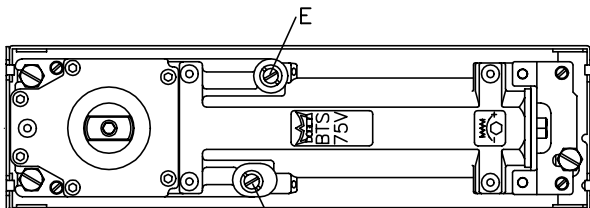
VALVE "E"— controls closing speed from approx. 15°–0°.

BTS 75V BF

VALVE "D"— controls closing speed from approx. 175°–70°. (Opening conditions may limit maximum opening.)

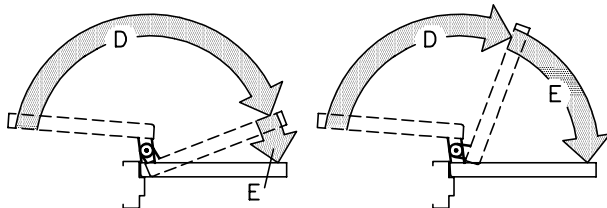
VALVE "E"— controls closing speed from approx. 70°–0°.

DELAYED ACTION : Turn valve "D" until desired delay time is obtained.



75V

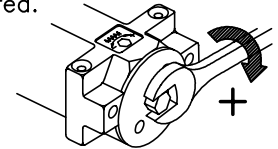
75V BF



HOLD OPEN : Mechanical hold open is available at 90° or 105° as an option when ordering closer.

7 Adjust spring tension, if required.

CRITICAL



BTS75VBF— Adjust only if more spring tension is required to positively close and latch the door. Depending on opening conditions, a door adjusted to meet barrier-free forces may not have sufficient power to reliably close and latch the door.

BTS75V— Adjust according to chart.

BTS75V	DOOR WIDTH				FULL TURNS OF SPRING ADJUSTING NUT
	EXTERIOR		INTERIOR		
	INCHES	(MM)	INCHES	(MM)	
	—	—	2'-6"	762	3
	2'-6"	762	3'-0"	914	6
	3'-0"	914	3'-6"	1067	10

NOTE: "MAX. 12 TURNS FROM MINIMUM SETTING".

8 Sealing compound (Optional)

Sealing compound is recommended for exterior doors or areas with excessive moisture. Make all final adjustments before adding compound. Refer to instructions packed with compound for full details.

9 Install cover plate or threshold.

Trim cover plate as required to match profile of pivot jamb. Install cover plate with four screws provided. Press tab in place behind spindle. If threshold is installed, do not anchor threshold to closer body since closer is adjustable within cement case.

