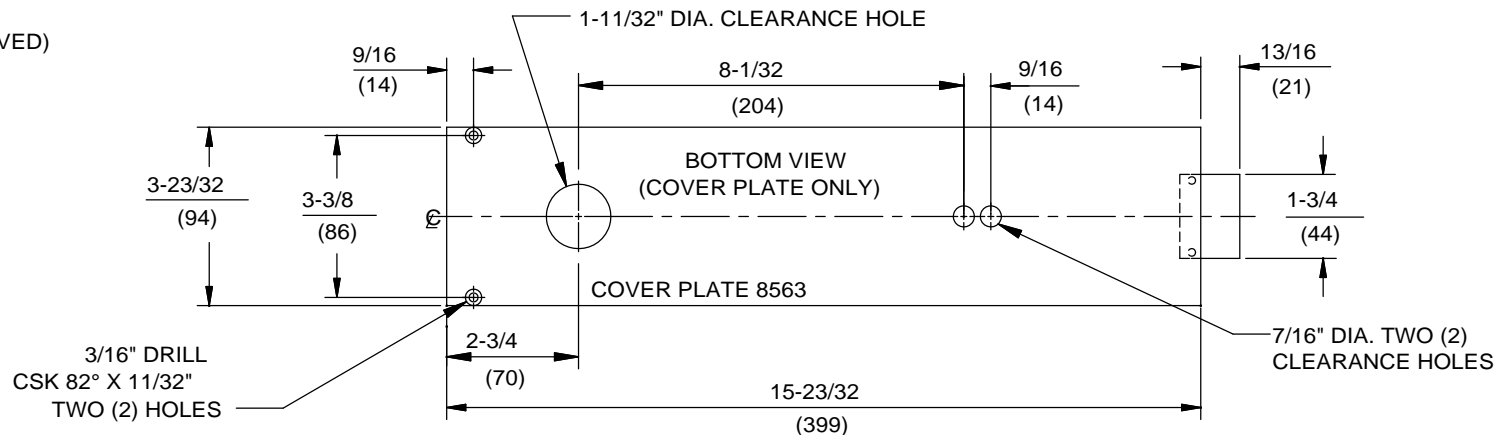
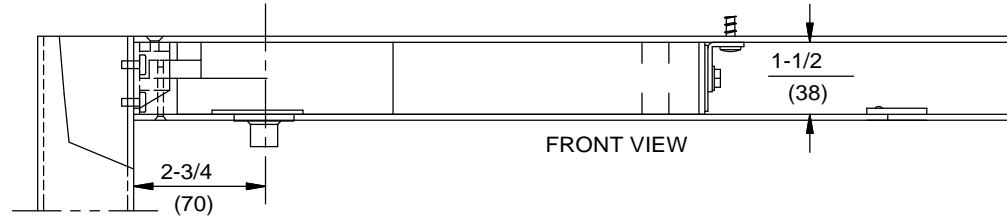
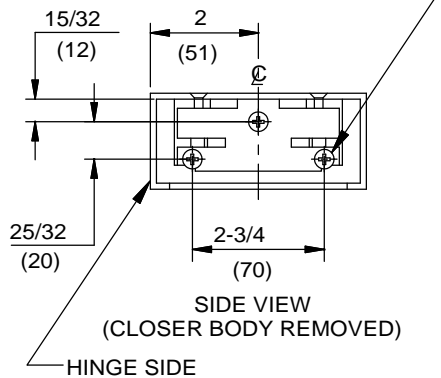
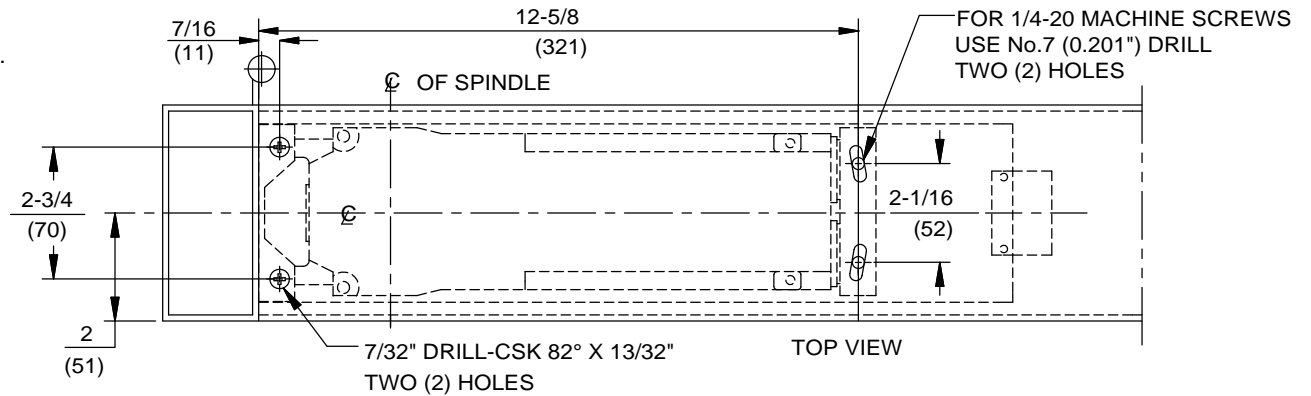


NOTE:

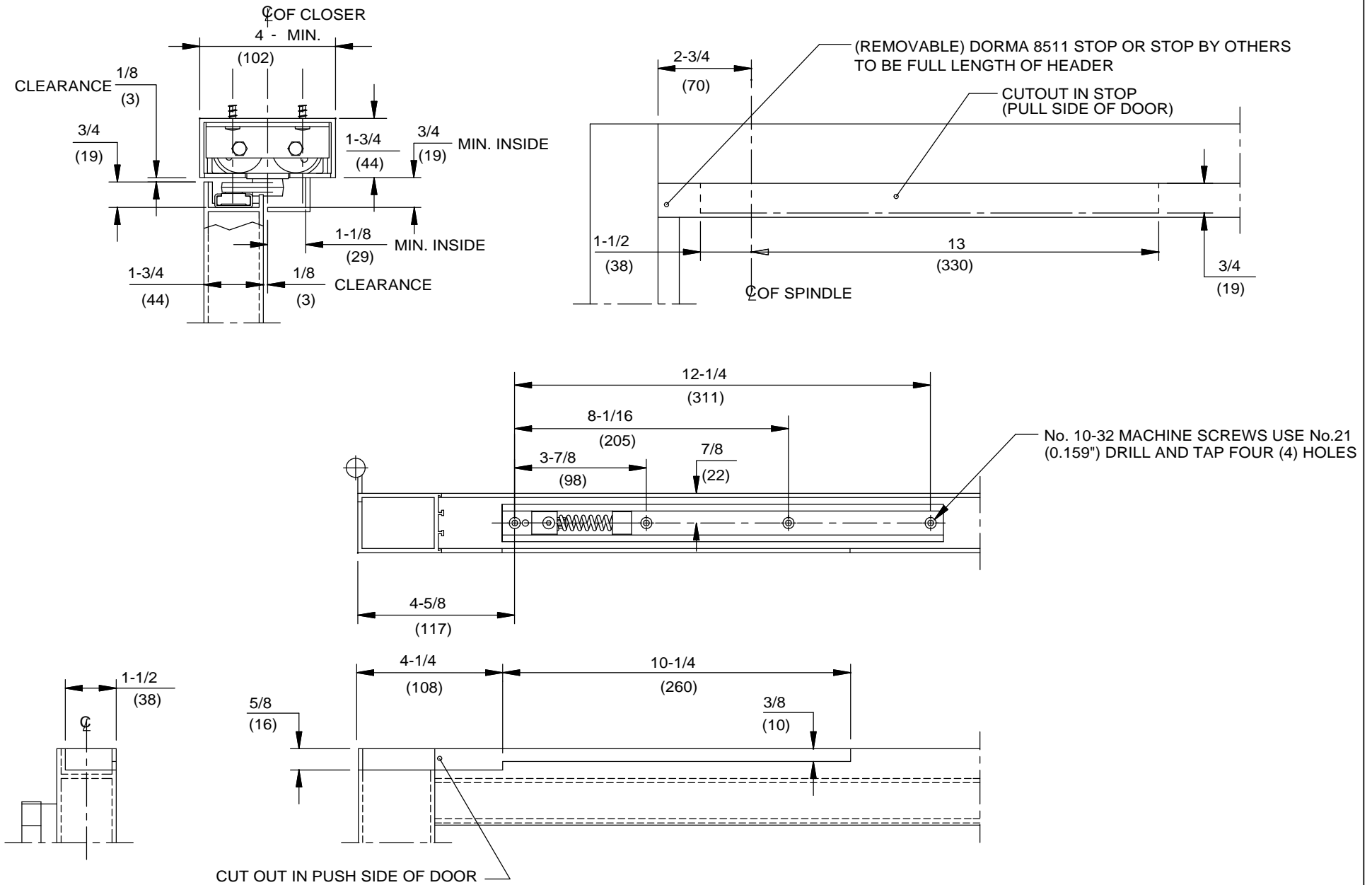
1. DO NOT SCALE DRAWING.
2. DIMENSIONS ARE IN INCHES/(MM).
3. MINIMUM HEADER SIZE 1-3/4" X 4".
4. CUT OUT FOR COVER PLATE 3-3/4" X 15-3/4".
5. CLEARANCE BETWEEN HEADER AND DOOR 1/8".
6. 90° HO MODELS NOMINAL HOLD OPEN AT 89°
105° HO MODELS NOMINAL HOLD OPEN AT 108°.
7. AUXILIARY STOP REQUIRED COINCIDING WITH DEADSTOP ON RTS CLOSER.



DOOR CLOSER MODEL: RTS SERIES PACKAGE 25, ALUMINUM DOOR AND FRAME PREPARATION, DOOR HUNG ON 4-1/2" WIDE BUTT HINGES, No. 8812 TRACK ARM, No. 8563 COVER PLATE WITH SLOTTED ANGLE BRACKET



DORMA Door Controls
Reamstown, PA 17567



DORMA Door Controls
 Reamstown, PA 17567