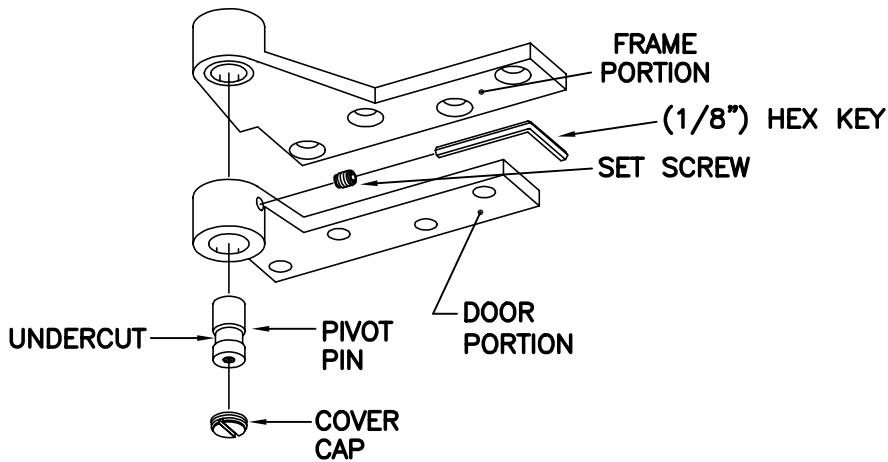


15-75120 TOP PIVOT
1-1/2" OFFSET FRAME PORTION
3/4" OFFSET DOOR PORTION



- 1) Prepare door and frame according to template.
- 2) Remove door portion cover cap, set screw and pivot pin.

MODEL NO. 15-75120	
<input type="checkbox"/> LH	<input type="checkbox"/> RH

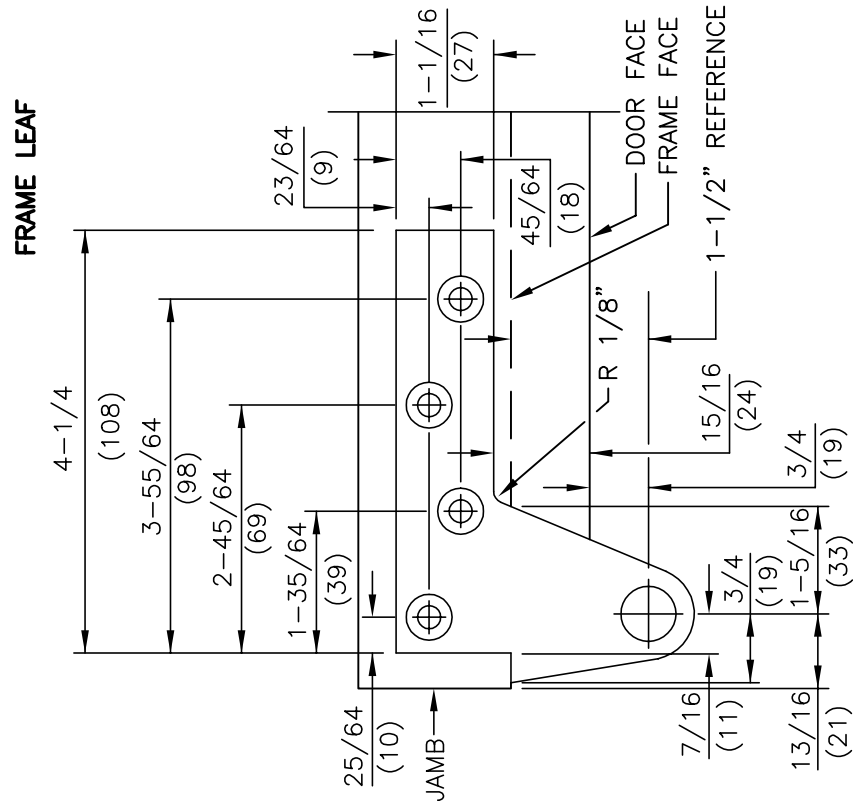
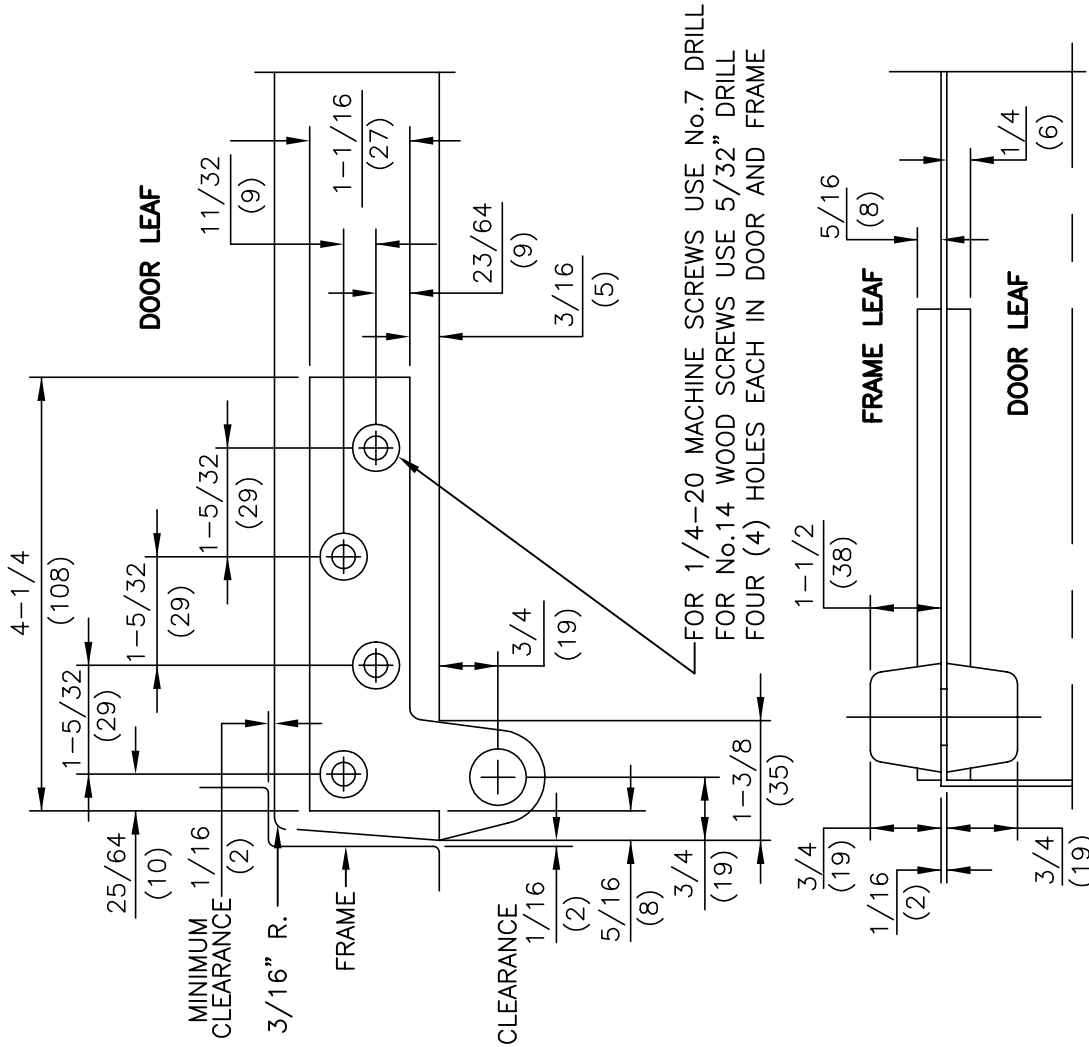


- 3) Fasten pivot to door and frame.
- 4) Install door. Align door and frame portions of top pivot. Install pivot pin making sure undercut area of pin aligns with set screw. Tighten set screw securely. Install door portion cover cap.

No.

REVISIONS

DATE



NOTES

1. DO NOT SCALE DRAWING.
2. DIMENSIONS ARE IN INCHES/(MM).
3. RIGHT HAND DOOR SHOWN.
4. BEVEL HEEL EDGE OF DOOR 1/8" IN 2".
5. ALL NECESSARY REINFORCING FOR PIVOT BY OTHERS.

**ITEM No.15-75120 FULL MORTISE TOP PIVOT
1-1/2" OFFSET FRAME PORTION 3/4" OFFSET DOOR PORTION**



DORMA Architectural Hardware
REAMSTOWN, PENNSYLVANIA 17567
TEMPLATE No. LM-51