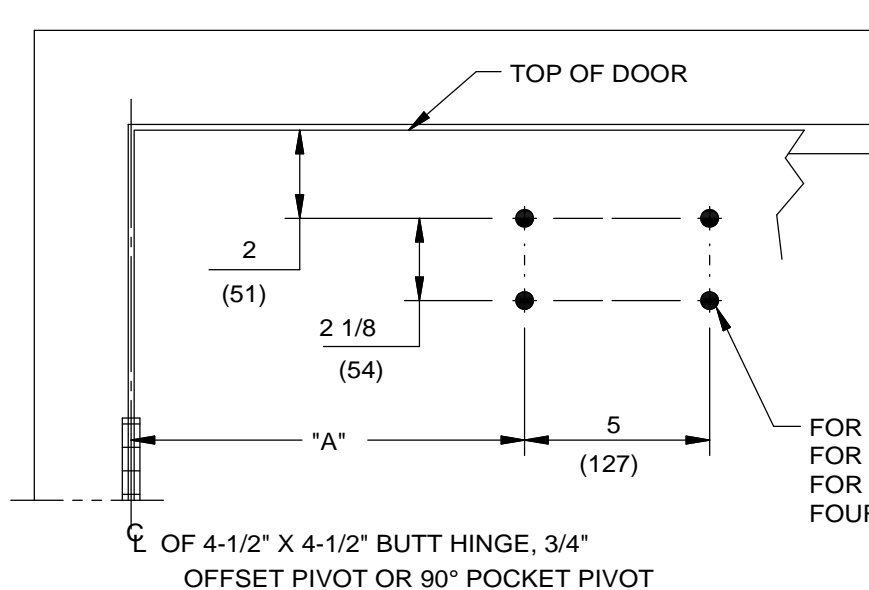


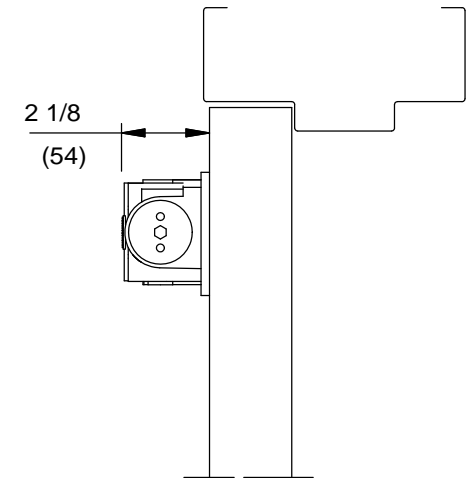
NOTES:

1. DO NOT SCALE DRAWING.
2. DIMENSIONS ARE IN INCHES/(MM).
3. RIGHT HAND DOOR SHOWN.
4. PRELOAD CLOSER PINION 45° BEFORE ARM ATTACHMENT.
5. ADEQUATE REINFORCEMENT BY OTHERS REQUIRED TO INSTALL TRACK IN POCKET.
6. ADJUST CLOSER SPRING TENSION FOR PROPER CLOSING AND LATCHING OF DOOR.
7. CAUTION: SEX NUTS ARE REQUIRED FOR ATTACHMENT OF COMPONENTS TO UNREINFORCED DOORS AND TO WOOD OR PLASTIC FACED COMPOSITE TYPE FIRE DOORS, UNLESS AN ALTERNATIVE METHOD IS IDENTIFIED IN THE INDIVIDUAL DOOR MANUFACTURER'S LISTINGS.
8. POCKET DEPTH IS MEASURED FROM PULL SIDE FACE OF DOOR AT 90°.

PIVOT/HINGE TYPE	DIM "A"
4-1/2" WIDE HINGES SWING CLEAR HINGES OR 3/4" OFFSET PIVOT	9" (229)
POCKET PIVOT	10 1/2" (267)



FOR 1/4-20 MACHINE SCREWS USE No.7 (0.201") DRILL & TAP
 FOR WOOD SCREWS PROVIDED USE 5/32" DRILL
 FOR SEX NUTS USE 3/8" DRILL
 FOUR (4) HOLES IN DOOR FOR CLOSER

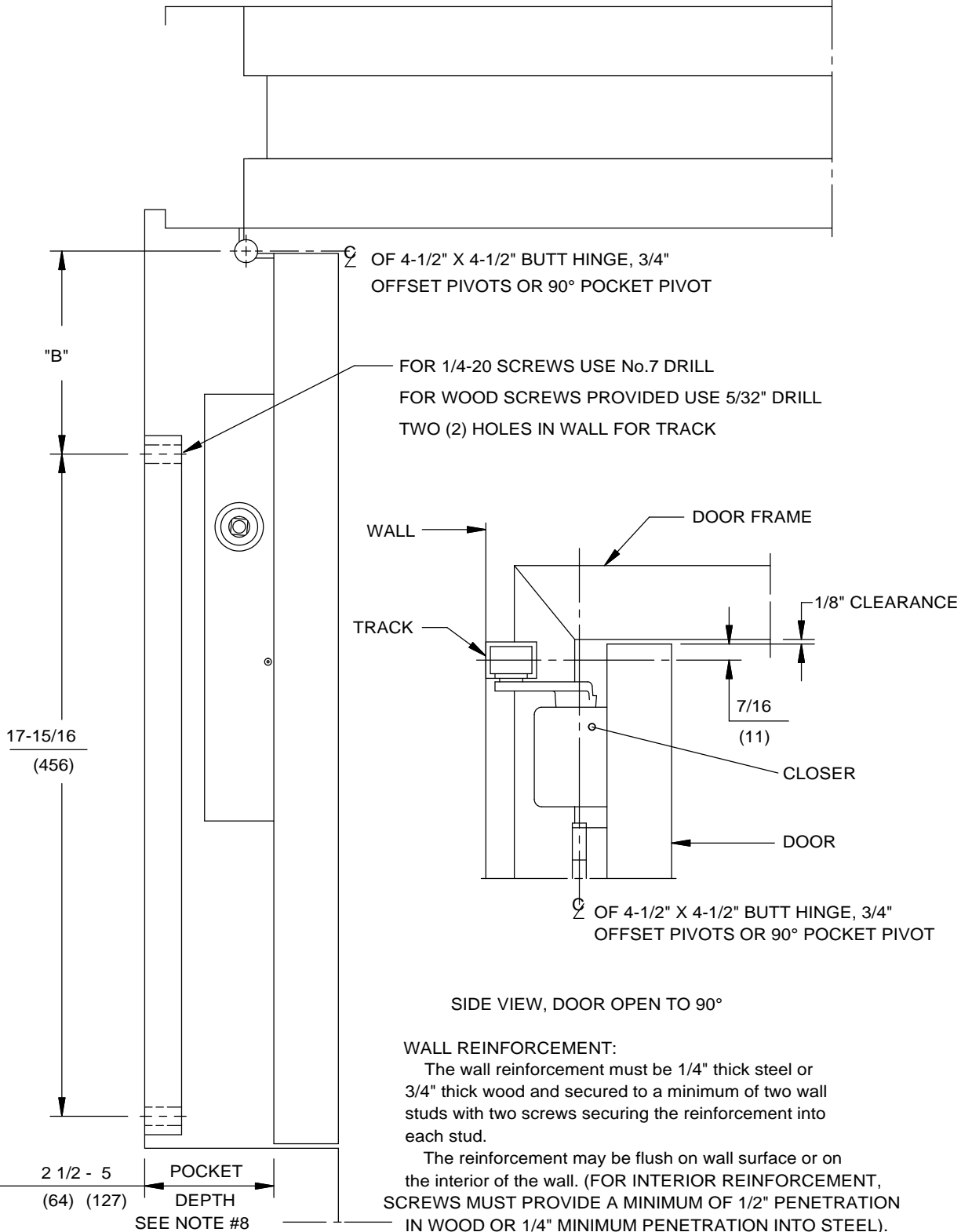


DOOR CLOSER MODEL: 8956 T PKT 90
 90° POCKET DOOR INSTALLATION (PULL SIDE MOUNT)
 TRACK SURFACE APPLIED TO WALL



DORMA Architectural Hardware
 Reamstown, PA 17567

TOP VIEW, DOOR OPEN TO 90°



SIDE VIEW, DOOR OPEN TO 90°

WALL REINFORCEMENT:

The wall reinforcement must be 1/4" thick steel or 3/4" thick wood and secured to a minimum of two wall studs with two screws securing the reinforcement into each stud.

The reinforcement may be flush on wall surface or on the interior of the wall. (FOR INTERIOR REINFORCEMENT, SCREWS MUST PROVIDE A MINIMUM OF 1/2" PENETRATION IN WOOD OR 1/4" MINIMUM PENETRATION INTO STEEL).

For a masonry wall, the reinforcement may be secured to the wall with four screws (ONE IN EACH CORNER) in lead anchors placed in the wall.

NOTE: IF REINFORCEMENT IS ON THE INTERIOR OF THE WALL LONGER SCREWS MAY BE REQUIRED FOR PROPER SCREW PENETRATION.

PIVOT/HINGE TYPE	DIM "B"
4-1/2" WIDE HINGES, SWING CLEAR HINGE, OR 3/4" OFFSET PIVOT	5-1/2 (140)
POCKET PIVOT	7 (178)

