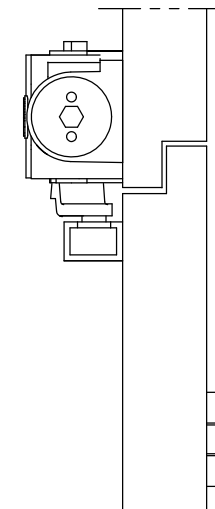
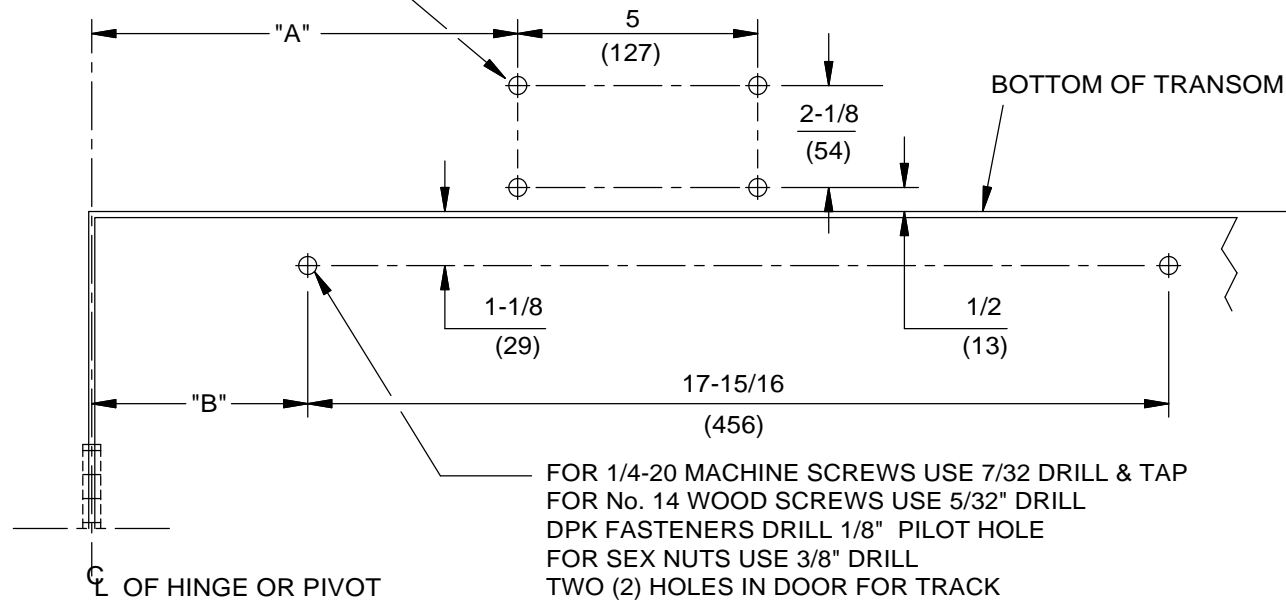


NOTES:

1. DO NOT SCALE DRAWING.
2. LEFT HAND DOOR SHOWN.
3. DIMENSIONS ARE IN INCHES/(MM).
4. CAUTION: SEX NUTS ARE REQUIRED FOR ATTACHMENT OF COMPONENTS TO UNREINFORCED DOORS AND TO WOOD OR PLASTIC FACED COMPOSITE TYPE FIRE DOORS, UNLESS AN ALTERNATIVE METHOD IS IDENTIFIED IN THE INDIVIDUAL DOOR MANUFACTURER'S LISTINGS.
5. MAXIMUM OPENING 135°.
7. SEE CATALOG FOR HOLD OPEN RANGE INFORMATION.
8. OPTIONAL DPK FASTENERS (DPK89) FOR STEEL DOOR & FRAME ONLY.

ANGLE OF OPENING	DIM "A" CLOSER	DIM "B" TRACK
85°	$\frac{10-7/8}{(276)}$	$\frac{7-3/4}{(197)}$
90°	$\frac{10-7/8}{(276)}$	$\frac{6-7/8}{(175)}$
110°	$\frac{9-7/8}{(251)}$	$\frac{5-1/2}{(140)}$
135°	$\frac{8-7/8}{(225)}$	$\frac{4-1/2}{(114)}$

FOR 1/4-20 MACHINE SCREWS USE 7/32 DRILL & TAP
 FOR No. 14 WOOD SCREWS USE 5/32" DRILL
 DPK FASTENERS DRILL 1/8" PILOT HOLE
 FOUR (4) HOLES IN FRAME FOR CLOSER



DOOR CLOSER MODELS: 8916, 8956 FT, FTH
 FLUSH TRACK INSTALLATION (PUSH SIDE MOUNT)



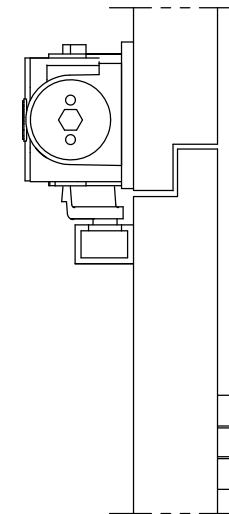
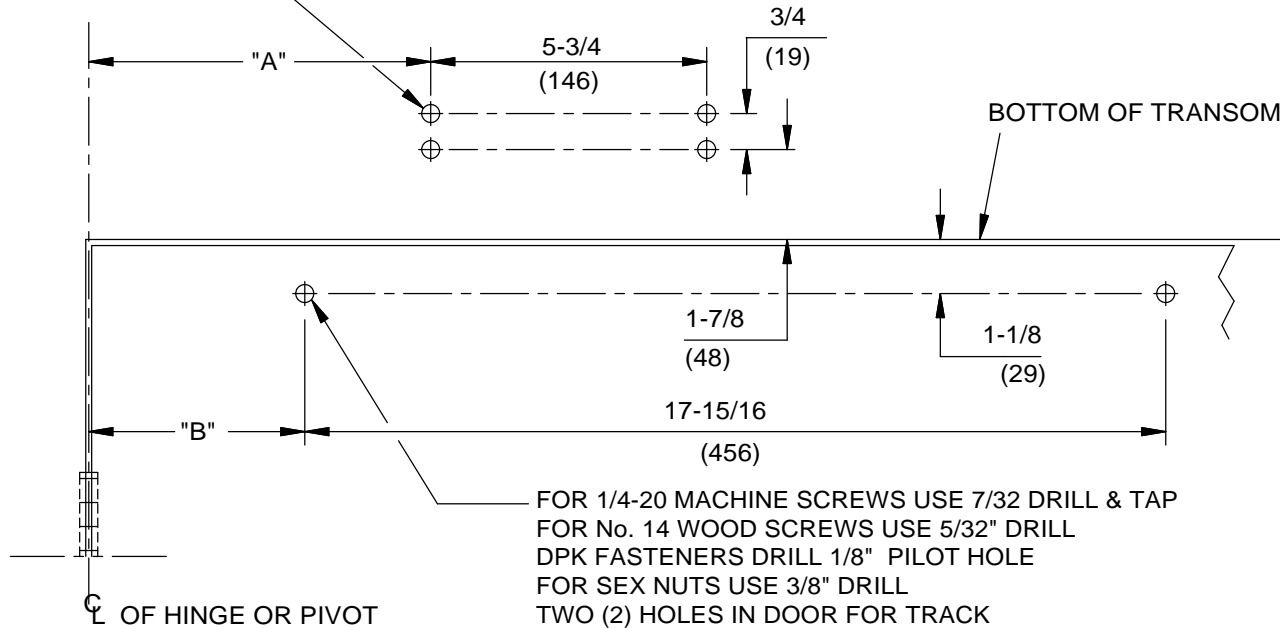
DORMA Architectural Hardware
 Reamstown, PA 17567

NOTES:

1. DO NOT SCALE DRAWING.
2. LEFT HAND DOOR SHOWN.
3. DIMENSIONS ARE IN INCHES/(MM).
4. CAUTION: SEX NUTS ARE REQUIRED FOR ATTACHMENT OF COMPONENTS TO UNREINFORCED DOORS AND TO WOOD OR PLASTIC FACED COMPOSITE TYPE FIRE DOORS, UNLESS AN ALTERNATIVE METHOD IS IDENTIFIED IN THE INDIVIDUAL DOOR MANUFACTURER'S LISTINGS.
5. MAXIMUM OPENING 135°.
6. USE TOP FOUR HOLES IN PLATE TO MOUNT TO FRAME.
7. SEE CATALOG FOR HOLD OPEN RANGE INFORMATION.
8. OPTIONAL DPK FASTENERS (DPK89) FOR STEEL DOOR & FRAME ONLY.

ANGLE OF OPENING	DIM "A" PLATE	DIM "B" TRACK
85°	9-1/8 (230)	7-3/4 (197)
90°	9-1/8 (230)	6-7/8 (175)
110°	8-1/8 (206)	5-1/2 (140)
135°	7-1/8 (181)	4-1/2 (114)

FOR 1/4-20 MACHINE SCREWS USE 7/32 DRILL & TAP
 FOR No. 14 WOOD SCREWS USE 5/32" DRILL
 DPK FASTENERS DRILL 1/8" PILOT HOLE
 FOUR (4) HOLES IN FRAME FOR PLATE



DOOR CLOSER MODELS: 8916, 8956 FT, FTH
 FLUSH TRACK INSTALLATION (PUSH SIDE MOUNT)
 WITH PLATE BP89



DORMA Architectural Hardware
 Reamstown, PA 17567