

## MultiMag® for outswinging doors

SINGLE DOORS

**BML-8310**

**BML-8310SCS**

(Security condition sensor)

**BML-8310DSS**

(Door status sensor)

**BML-8310DSSSCS**

(Door status and security condition sensors)

DOUBLE DOORS

**BML-8320**

**BML-8320SCS**

(Security condition sensor)

**BML-8320DSS**

(Door status sensor)

**BML-8320DSSSCS**

(Door status and security condition sensors)



## These hard-working multi-purpose electromagnetic locks enhance building security and install quickly.

Several standard features make these magnets the “workhorse” of the industry. The adjustable mounting bracket has been enhanced with keyhole mounting to support the magnet’s weight during initial installation, freeing the installer’s hands to affix the magnet mounting screws. The removable cavity cover offers quick, easy access to wiring.



**Energy**  
230mA<sup>1</sup>  
Auto-Sensing 12-24VDC



**Fire-Rated**  
CAN/ULC S104  
UL 10C 1-1/2-Hours



**Strength**  
Up to 1,200lbf Holding Force  
(Each Electromagnet)



**Monitoring**  
Optional Door Status Sensor  
(DSS)/Security Condition  
Sensor (SCS) Available



**Warranty**  
Lifetime Limited Warranty

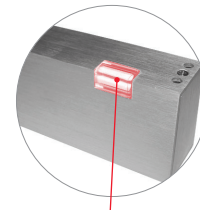


**Mode**  
Fail-Safe

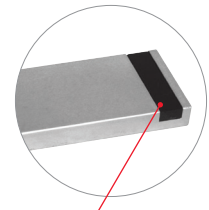
## Electromagnetic Locks

### Easy, affordable and versatile.

From keyhole mounting to the removable cavity cover to the built-in adjustable time delay, the BEST MultiMag® proves why it's the industry workhorse.



LED Indicator  
(for models with SCS only)



Magnetic Door Contact  
(for models with DSS only)

### Product specifications

	BML-8310	BML-8320
<b>Housing dimensions</b>	1-5/8" (41mm) x 2-7/8" (73mm) x 10-1/2" (268mm) DWL Dimensions include 1/4" (6mm) housing bracket	
<b>Armature plate dimensions</b>	Standard: 5/8" (16mm) x 2-3/8" (61mm) x 7-7/16" (190mm) DWL* Optional: 3/8" (10mm) X 2-3/8" (61mm) x 7-7/16" (190mm) DWL*	
<b>Voltage</b>	Field selectable 12/24VDC; Tolerance ±10%	
<b>Power/current requirements</b>	Max 0.23A at 12VDC; Max 0.13A at 24VDC (each lock)	
<b>Holding force</b>	Up to 1200 lbf (one point locking)	Up to 1200 lbf each point (two point locking)
<b>Output relays</b>	SCS (with LED)—SPDT 1.25A at 24VDC DSS—SPDT 0.20A at 12VDC and 0.12A at 24VDC	
<b>Wiring requirements</b>	2 wires-power input Up to 4 wires output	2 or 4 wires-power input 4 or 8 wires output
<b>Adjustable time delay</b>	1-35 seconds	
<b>Operating temperature</b>	14° to 140° F (-10° to 60° C)	
<b>Finishes</b>	28 Brushed Anodized Aluminum (630) 40 Brushed Anodized Dark Bronze (690)	
<b>Monitoring options</b>	SCS—Security Condition Sensor (includes LED indicator) with low-voltage detection; DSS—Door Status Sensor	
<b>Warranty</b>	Lifetime Limited Warranty	
<b>Certifications</b>	UL 294 Special Locking Arrangement Component (6th Edition) CAN/ULC S104 Auxiliary Locks Listed for fire doors rated up to 1-1/2 hours UL 10C Auxiliary Locks Listed for fire doors rated up to 1-1/2 hours	

### Optional accessories†

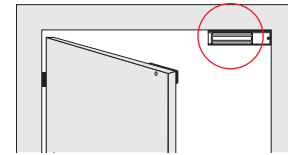
	BML-TJ10	BML-TJ20
<b>Z-bracket kit</b>		
<b>Split armature plate</b>	<b>BML-SA138</b> 3/8" (9.5mm) <b>BML-SA158</b> 5/8" (16mm)	
<b>Glass door bracket</b>	<b>BML-GB8112</b> 1/2" (13mm) <b>BML-GB8134</b> 3/4" (19mm)	<b>BML-GB8212</b> 1/2" (13mm) <b>BML-GB8234</b> 3/4" (19mm)
<b>Armature plate holder</b>	<b>BML-AH10</b> <b>BML-AH15</b> for 8310DSS	<b>BML-AH20</b> <b>BML-AH25</b> for 8320DSS

### Features

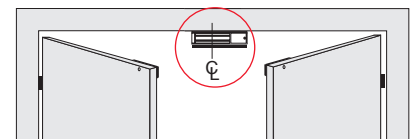
#### BEST MultiMag®

- **Available with optional sensors:** Security Condition (SCS) and /or Door Status Sensors (DSS)
- **Built-in time delay:** instant release with adjustable relock, programmable from 0-35 seconds
- **Surge protection**
- **Engineered to overcome residual magnetism**
- **Designed for easy installation**
- **Keyhole mounting** with stabilizing 4-bolt "drop stop"
- **Easy-access wiring cavity**
- **Convenient plug-in wiring terminals**
- **Includes:** Teks® self-drilling fasteners; 5/8" (16mm) armature plate and paper template
- **Built-to-last:** limited lifetime warranty

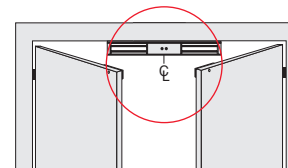
#### Installation



BML-8310 Typical Installation



BML-8310 Split Armature Installation



BML-8320 Typical Installation



<sup>1</sup> Max at 12VDC for BML-8310, 460mA for BML-8320  
\* DSS armature plate dimensions are 5/8" D x 2-3/8" W x 10" L (16mm x 61mm x 262 mm) and 3/8" D x 2-3/8" W x 10" L (9.5mm x 61mm x 252mm)  
† Accessories may impact holding force

**Choose BEST Electromagnetic Locks for a solution that you can trust.**

bestaccess.com

dormakaba

BEST is a trademark of dormakaba USA Inc. All rights reserved.



BA-0343  
© 2018 dormakaba USA Inc.