

# 9000 series MLR exit device

Supplemental Instructions: Removing Old MLR Assembly On Existing MLR Device

## DEVICE CHECK!

Identify the current installation location of the MLR assembly:

- Determine if the MLR device is installed on the front arm assembly or the rear arm assembly.

**NOTE:** If the MLR device has two white wires, it indicates an older model. Please follow the instructions provided in this document before referring to the "9000 Series Motorize Latch Retraction Kit Installation Instructions, 95227."

If the MLR device is installed on the front arm assembly:

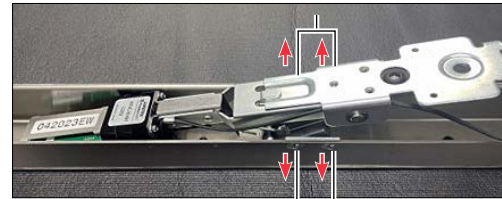
- See the "9000 Series Motorized Latch Retraction Kit Installation Instructions, 95227" for guidance.

If the MLR device is installed on the rear arm assembly:

- Follow the instructions in this document to remove the old MLR assembly and prepare the exit device for the installation of the new MLR assembly.

## 1 Removing old MLR assembly from touchbar

Fig. 1



Screws (x4)

Fig. 2



Old MLR assembly

**CAUTION!** Lip of touchbar may be sharp.

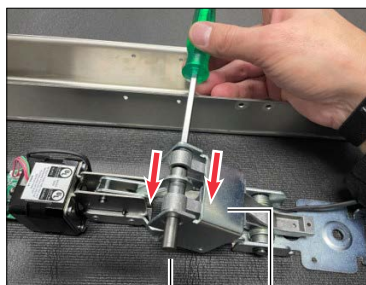
- 1.1 Using a Phillips screwdriver, remove four screws securing old MLR assembly to touchbar.

**NOTE:** Set aside screws for use in Step 7.

- 1.2 Remove old MLR assembly from touchbar.

## 2 Removing bracket from rear arm

Fig. 3



Clevis pin  
Bracket

Fig. 4



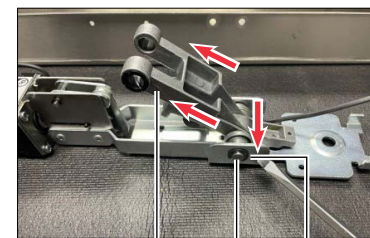
Bracket  
Bushings (x2)  
Clevis pin

**NOTE:** Set aside clevis pin and bracket for use in Step 6. Discard bushings.

- 2.1 Using a flathead screwdriver, remove clevis pin, bracket and bushings from rear arm.

## 3 Removing rear arm from dogging bracket

Fig. 5



Rear arm  
Pin  
E-clip

**CAUTION!** Rear arm is spring-loaded; it may release forcefully.

- 3.1 Using a flathead screwdriver, remove pin and E-clip from rear arm and dogging bracket.

Fig. 6



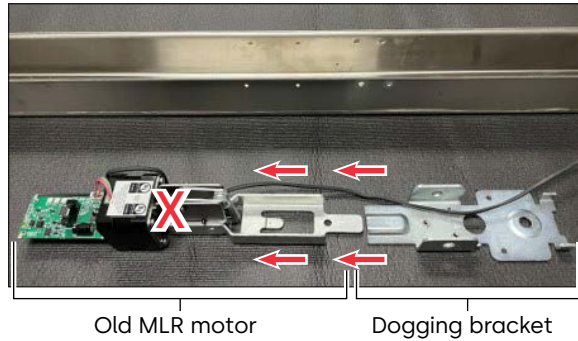
Rear arm  
Pin  
E-clip

- 3.2 Remove rear arm.

**NOTE:** Set aside rear arm, pin and E-clip for use in Step 5.

## 4 Separating old MLR motor from dogging bracket

Fig. 7

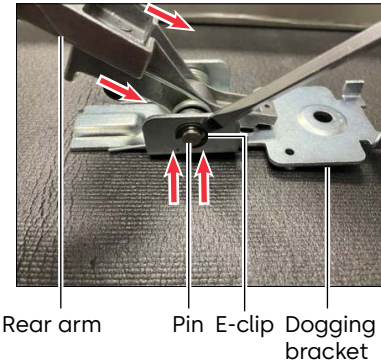


4.1 Slide old MRL motor from dogging bracket to detach it.

**NOTE: Set aside dogging bracket for use in Step 5. Discard old MLR motor.**

## 5 Re-installing rear arm to dogging bracket

Fig. 8

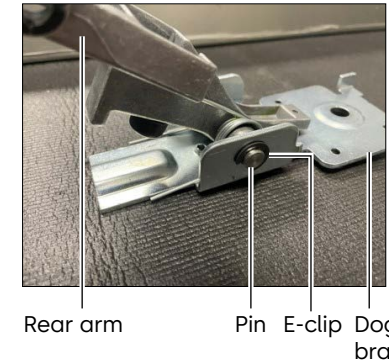


**⚠ CAUTION! Spring is sharp.**

**NOTE: Spring must be loaded in proper orientation.**

5.1 Locate pin and E-clip from Step 3.

Fig. 9



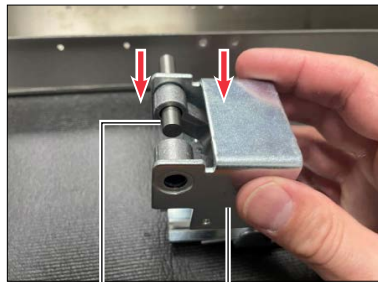
5.2 Position rear arm over dogging bracket, aligning side holes of both components.

5.3 Insert pin through aligned holes.

5.4 Using a flat head screwdriver, secure with E-clip.

## 6 Re-installing bracket to rear arm assembly

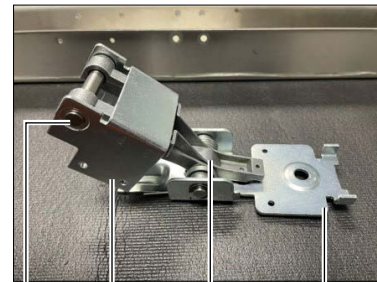
Fig. 10



6.1 Locate clevis pin and bracket from Step 2.

6.2 Position bracket over rear arm, aligning side holes of both components.

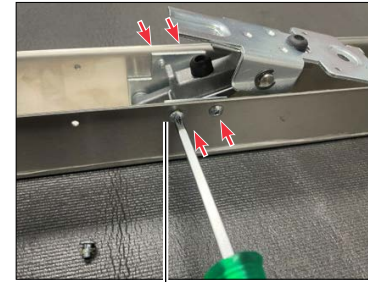
Fig. 11



6.3 Insert clevis pin through aligned holes.

## 7 Re-installing rear arm assembly

Fig. 12

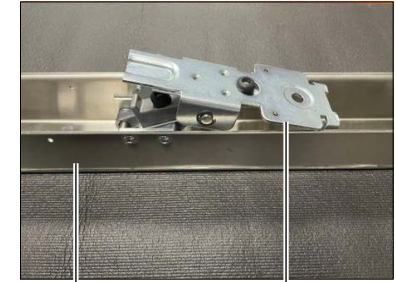


**⚠ CAUTION! Lip of touchbar may be sharp.**

7.1 Locate four screws and touchbar from Step 1.

7.2 Position rear arm assembly inside touchbar, aligning holes of both components.

Fig. 13



7.3 Using a Phillips screwdriver, secure rear arm assembly to touchbar with four screws.

7.4 See "9000 Series MLR Kit Installation Instructions, [95227](#)" and follow "Step 3.3, along with subsequent steps, to complete installation.