

# Door Closer Models: HD8016 and HD8056 Spring Door Saver Arm Left Hand Parallel [S-DS] Drilling Instructions

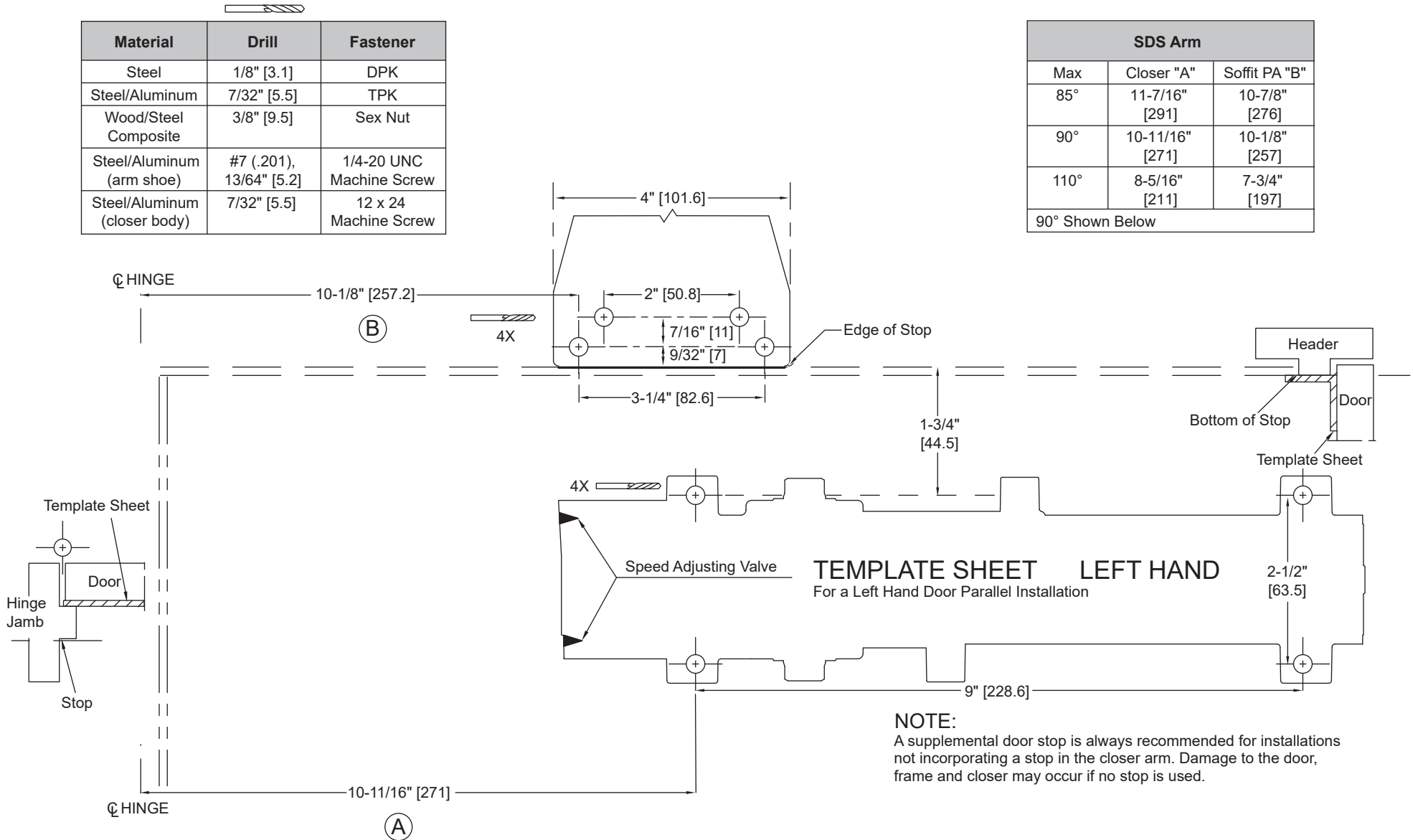
NOTE: Flip Closer, PA Bracket for RH Application

For online instructions, assistance or warranty information:

Call 1-800-392-5209 or visit <https://dhwsupport.dormakaba.com/hc/en-us>

Material	Drill	Fastener
Steel	1/8" [3.1]	DPK
Steel/Aluminum	7/32" [5.5]	TPK
Wood/Steel Composite	3/8" [9.5]	Sex Nut
Steel/Aluminum (arm shoe)	#7 (.201), 13/64" [5.2]	1/4-20 UNC Machine Screw
Steel/Aluminum (closer body)	7/32" [5.5]	12 x 24 Machine Screw

SDS Arm		
Max	Closer "A"	Soffit PA "B"
85°	11-7/16" [291]	10-7/8" [276]
90°	10-11/16" [271]	10-1/8" [257]
110°	8-5/16" [211]	7-3/4" [197]
90° Shown Below		



Not to scale. Measurements are for reference only.  
Not a drilling template.