

NOTES:

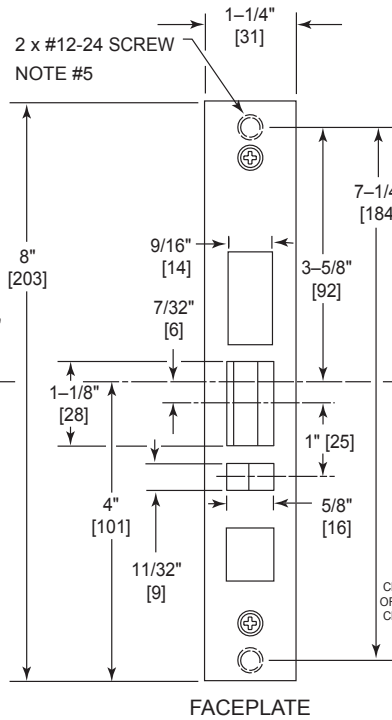
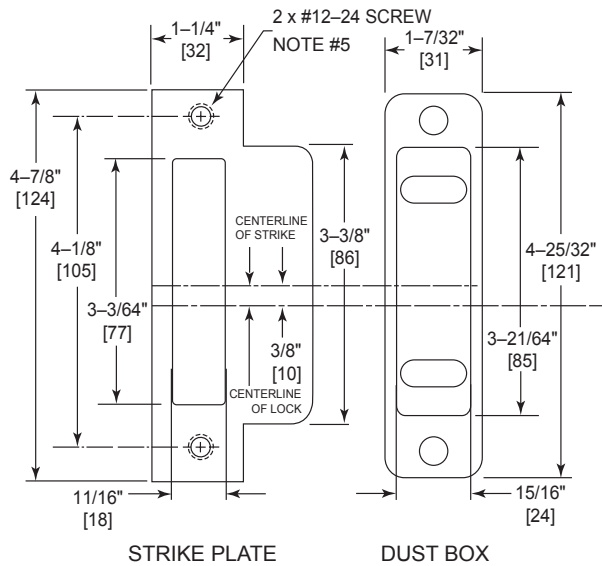
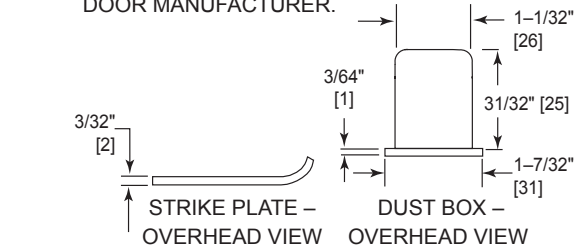
- BEFORE DRILLING, CHECK TEMPLATE—INSTALLATION TEMPLATE FOR MORTISE LOCKS AND ELECTRIFIED MORTISE LOCKS (93738).
- MAXIMUM DOOR-TO-FRAME GAP IS 3/16" [4].
- ALLOW 3/64" [1] CLEARANCE FOR DUST BOX THICKNESS.
- FOR METAL DOORS, LOCK CASE SUPPORT IS REQUIRED FROM DOOR MANUFACTURER.

- TAP FOR A #12-24 MACHINE SCREW OR DRILL FOR A #12 WOOD SCREW (A COMBINATION SCREW IS SUPPLIED).
- LOCK CASE HOLES:

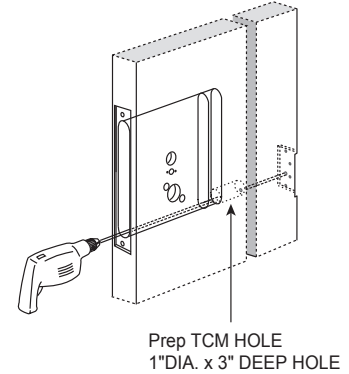
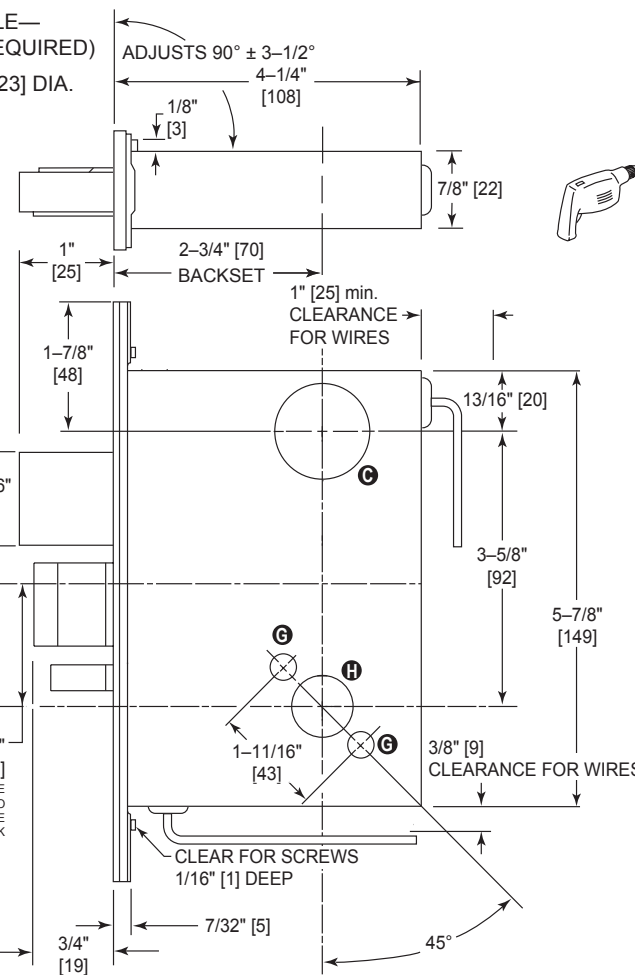
- C** CYLINDER HOLE— 1-1/4" [32] DIA.
- G** TRIM MOUNTING HOLE— 3/8" [10] DIA. (TWO REQUIRED)
- H** LEVER HOLE — 7/8" [23] DIA.

NOTES:

- BACKSET: 2-3/4" [70]
- DOOR THICKNESS: 1-3/4" [44] – 4" [101]



MORTISE CASE — OVERHEAD VIEW



NOT TO SCALE. MEASUREMENTS ARE FOR REFERENCE ONLY. NOT A DRILLING TEMPLATE.

M1000 ELECTRIFIED LOCKSETS FOR LOCKSET TRIM STYLES A, B, D, H, M

