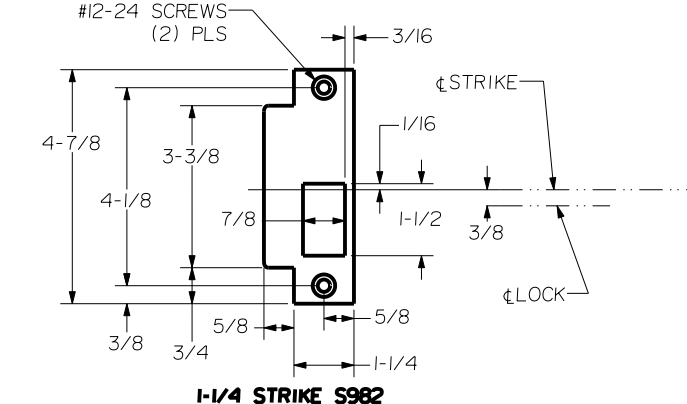
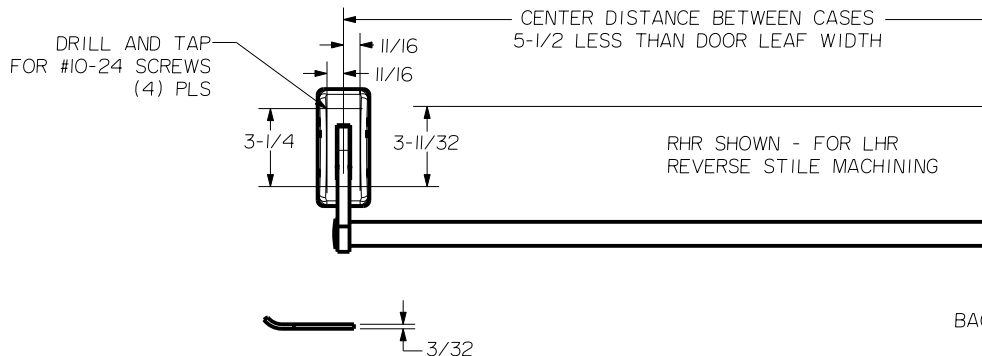
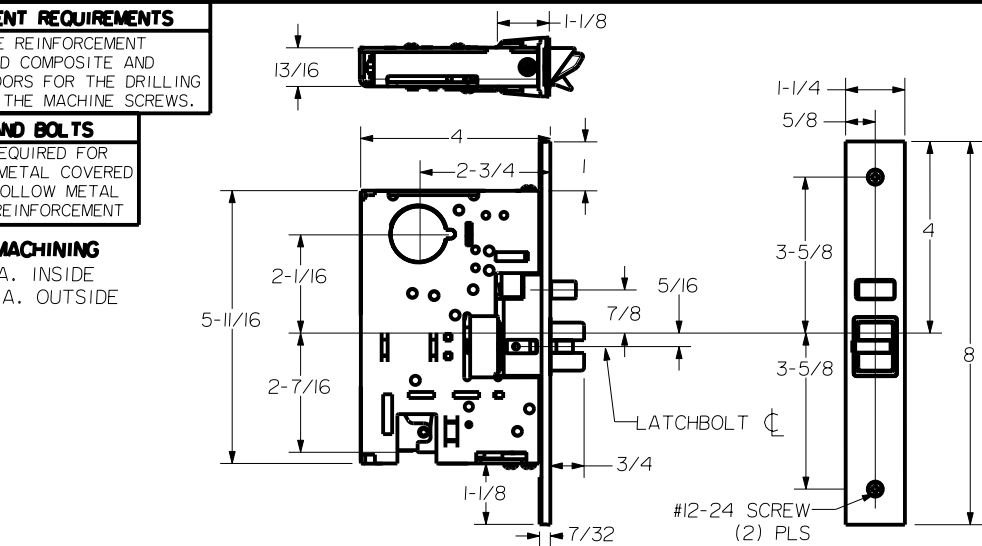


REINFORCEMENT REQUIREMENTS
 PROVIDE ADEQUATE REINFORCEMENT TO METAL COVERED COMPOSITE AND HOLLOW METAL DOORS FOR THE DRILLING AND TAPPING FOR THE MACHINE SCREWS.

SEX NUTS AND BOLTS
 SEX BOLTS ARE REQUIRED FOR PLASTIC, WOOD, METAL COVERED COMPOSITE AND HOLLOW METAL DOORS WITHOUT REINFORCEMENT

SEX BOLT MACHINING
 DRILL 1/4 DIA. INSIDE
 DRILL 3/8 DIA. OUTSIDE



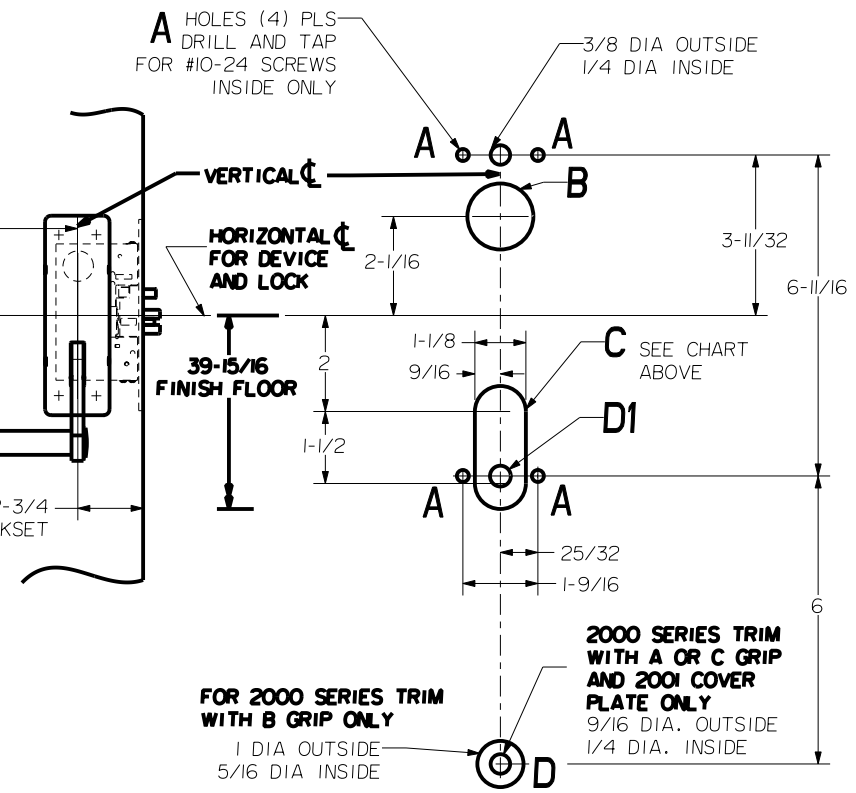
1-1/4 STRIKE S982


NOTE:
 "LETTER" AT END OF TRIM MODEL NO. DESIGNATES GRIP STYLE. EXCEPT AS NOTED GRIP STYLE HAS NO EFFECT ON STILE MACHINING.

S985,S984 OPTIONAL OPEN BACK STRIKES
 SEE TEMPLATE NUMBER HM-S985

DEVICES	TRIMS	HOLE B 1-3/8 DIA. THRU DOOR	SLOT C	D1
301.FL301	2001	NO	INSIDE ONLY	3/8 DIA OUTSIDE
302.FL302	2002			
303.FL303	2003			
305.FL305	M2005	YES	THRU DOOR	NO
315.FL315	M2015	NO		

LOCK STILE MACHINING



 Precision Hardware a Division of Stanley Security Solutions, Inc. www.stanleysecuritysolutions.com			
DEVICE SERIES		TRIM SERIES	
300, FL300		2000	
STRIKE NO.	RELEASED DATE	TEMPLATE NO.	REV
S982	5/01/05	HM-300B	C