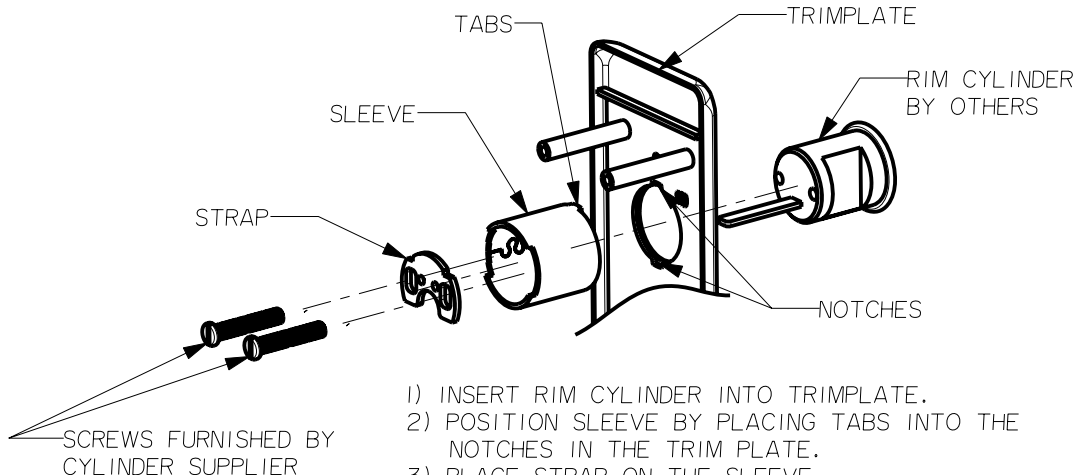


1700 SERIES TRIM INSTRUCTIONS

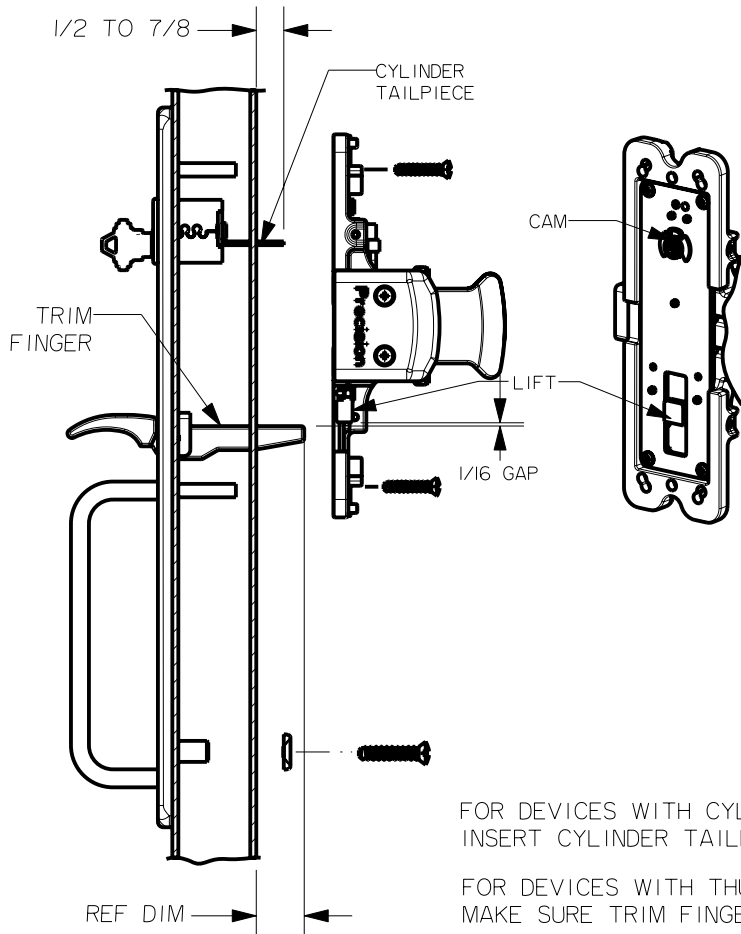
(SEE TEMPLATE FOR DOOR PREPARATION)

RIM CYLINDER INSTALLATION



- 1) INSERT RIM CYLINDER INTO TRIMPLATE.
- 2) POSITION SLEEVE BY PLACING TABS INTO THE NOTCHES IN THE TRIM PLATE.
- 3) PLACE STRAP ON THE SLEEVE.
- 4) SECURE CYLINDER BY TIGHTENING SCREWS.

TRIM INSTALLATION



NOTE:
REF DIM DOES NOT APPLY
TO MORTISE DEVICE TRIMS

DEVICE TYPE	DOOR THK.	REF DIM
TOUCHBAR DEVICE	1-3/4	1
	2	3/4
	2-1/4	1/2
CROSSBAR DEVICE	1-3/4	7/16
	2	3/16
	2-1/4	-1/16

FOR DEVICES WITH CYLINDER FUNCTION,
INSERT CYLINDER TAILPIECE INTO THE CAM

FOR DEVICES WITH THUMBPIECE
MAKE SURE TRIM FINGER IS UNDER THE LIFT WITH 1/16 GAP.

SECURE THE CHASSIS TO THE TRIM WITH SCREWS

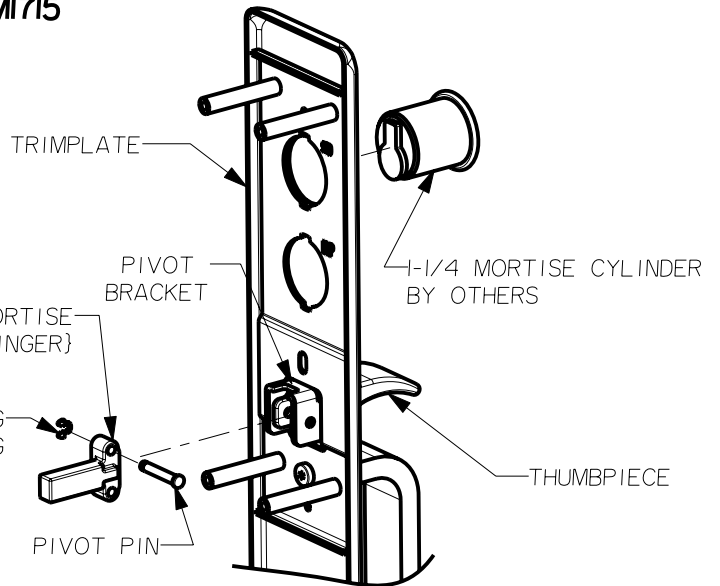
1700 SERIES TRIM INSTRUCTIONS

(SEE TEMPLATE FOR DOOR PREPARATION)

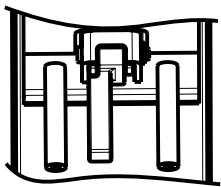
MORTISE TRIM - CYLINDER INSTALLATION/HANDING CHANGE

MI705, MI715

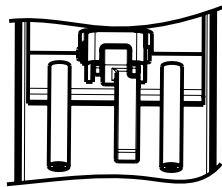
- 1) THREAD CYLINDER INTO THE MORTISE LOCK THROUGH TRIM ASSEMBLY.
- 2) SECURE WITH SCREW THROUGH MORTISE LOCK FRONT.



- 1) REMOVE TRIM FINGER BY REMOVING RETAINING RING AND PIVOT PIN.
- 2) ROTATE TRIM FINGER 180° AND REASSEMBLE WITH PIVOT PIN AND RETAINING RING AS SHOWN.



TRIM FINGER
RHRB POSITION

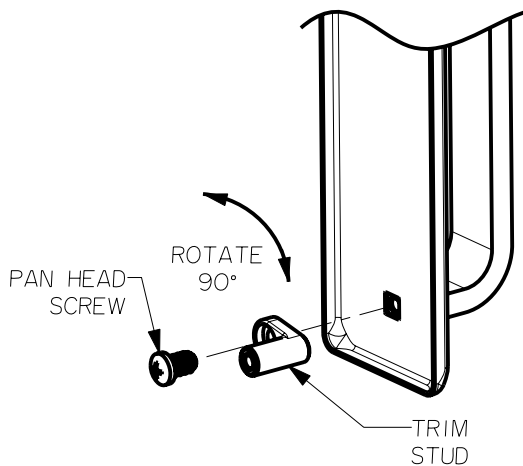


TRIM FINGER
LHRB POSITION

SERIES CI700 TRIM

CI700A AND CI700C SERIES TRIM

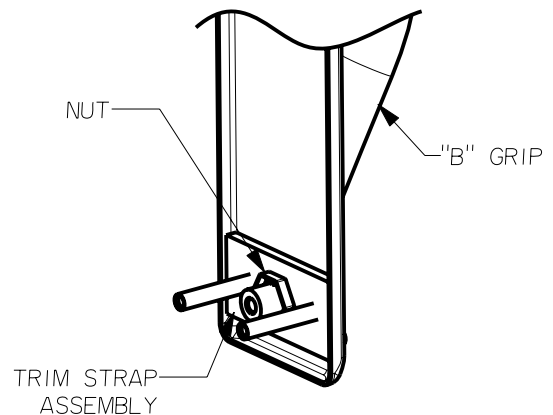
TO CONVERT STANDARD I700A, I700C SERIES TRIM FOR 2800 SERIES CONCEALED VERTICAL ROD DEVICES



- 1) REMOVE TRIM STUD BY REMOVING SCREW.
- 2) ROTATE TRIM STUD 90° AS SHOWN AND SECURE IT WITH THE SCREW.

CI700B SERIES TRIM

BOTTOM THRU BOLTS SHOWN FOR REFERENCE ONLY



STANLEY

phi

DRWG 01823-11-000 DATE 04/01/03 REVISION A

Precision Hardware
a Division of Stanley Security Solutions, Inc.
www.stanleysecuritysolutions.com