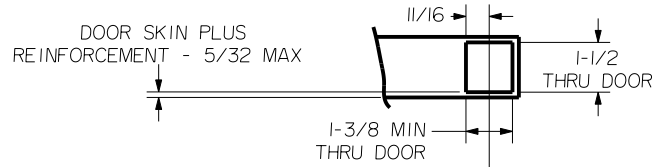
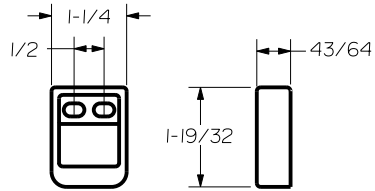


SEX BOLT MACHINING

DRILL 1/4 DIA. INSIDE
DRILL 3/8 DIA. OUTSIDE



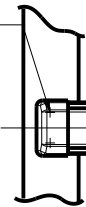
NOTCH THRU INSIDE FACE 1-5/8 DEEP



S519 TOP STRIKE
(SURFACE APPLIED)

1-1/16 BACKSET

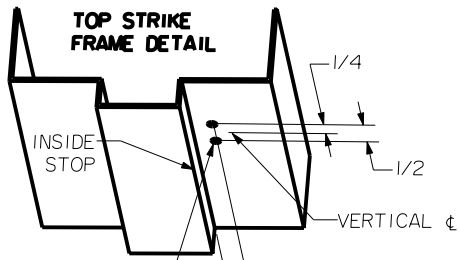
PREPARE THESE HOLES AT DEVICE INSTALLATION



HORIZONTAL CL
FOR DEVICE

RHR SHOWN - FOR LHR REVERSE STILE MACHINING

39-15/16 FINISHED FLOOR



DRILL AND TAP FOR #10-24 SCREWS

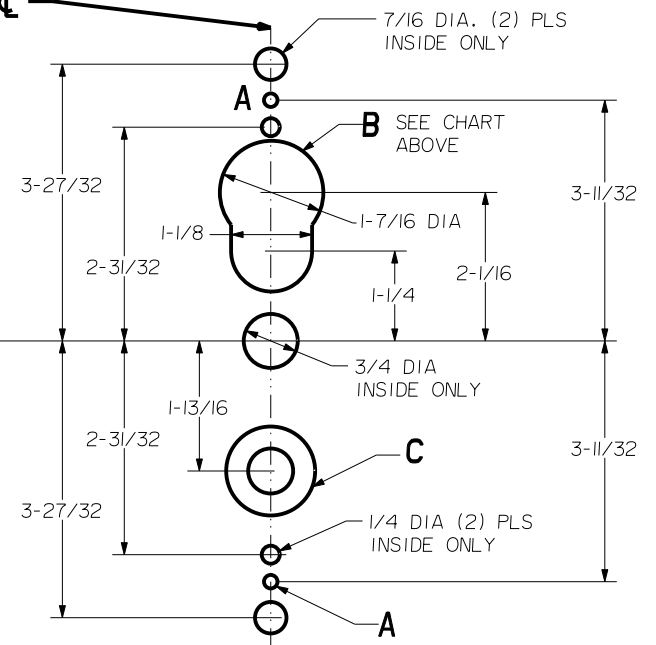
7/32 DIA INSIDE ONLY
STRIKE S460
FINISHED FLOOR
ACCOMMODATES 1/4 TO 3/4 GAP

2-5/8
3/4

DEVICES	TRIMS	HOLE (2) PLS A	HOLE B	HOLE C
2608	2908	1/4 DIA INSIDE 13/32 DIA OUTSIDE	OUTSIDE ONLY	5/8 DIA INSIDE 1-3/8 DIA OUTSIDE
2614	2914		NOT REQ'D	

LOCK STILE MACHINING

VERTICAL CL



NOTE: "LETTER" AT END OF TRIM MODEL NO. DESIGNATES LEVER STYLE. EXCEPT AS NOTED, LEVER STYLE HAS NO EFFECT ON STILE MACHINING.

LBR DEVICES:
OMIT BOTTOM BOLT MACHINING.

		Precision Hardware a Division of Stanley Security Solutions, Inc. www.stanleysecuritysolutions.com	
DEVICE SERIES		TRIM SERIES	
2600, 2600LBR		2908, 2914	
STRIKE NO.	RELEASED DATE	TEMPLATE NO.	REV
S519, S460	5/01/05	AL-2600B	C