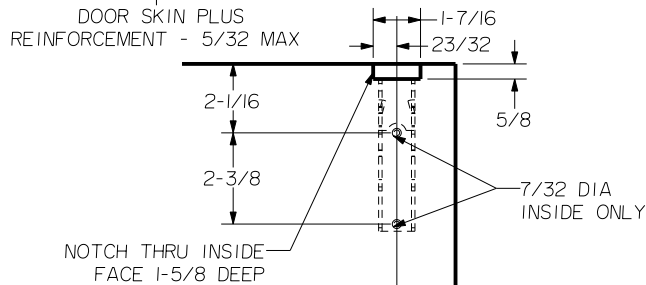
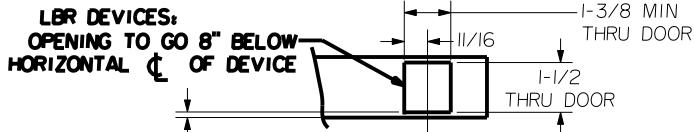


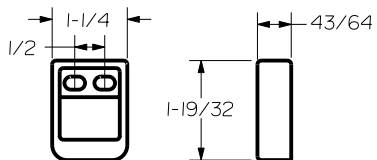
REINFORCEMENT REQUIREMENTS
 PROVIDE ADEQUATE REINFORCEMENT TO METAL COVERED COMPOSITE AND HOLLOW METAL DOORS FOR THE DRILLING AND TAPPING FOR THE MACHINE SCREWS.

SEX NUTS AND BOLTS
 SEX BOLTS ARE REQUIRED FOR PLASTIC, WOOD, METAL COVERED COMPOSITE AND HOLLOW METAL DOORS WITHOUT REINFORCEMENT

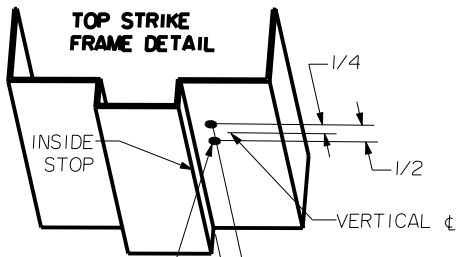
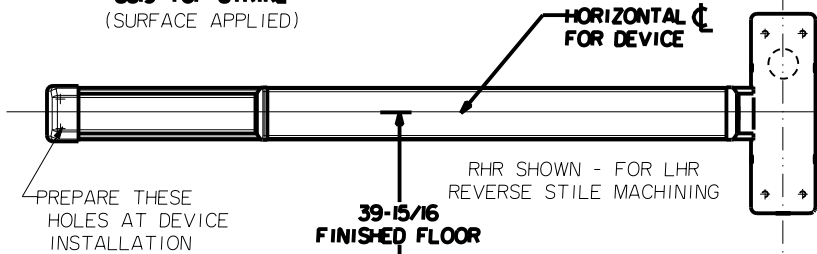
SEX BOLT MACHINING
 DRILL 1/4 DIA. INSIDE
 DRILL 3/8 DIA. OUTSIDE



2-3/4 BACKSET OR CENTERED ON EXPOSED LOCKSTILE



S519 TOP STRIKE
(SURFACE APPLIED)



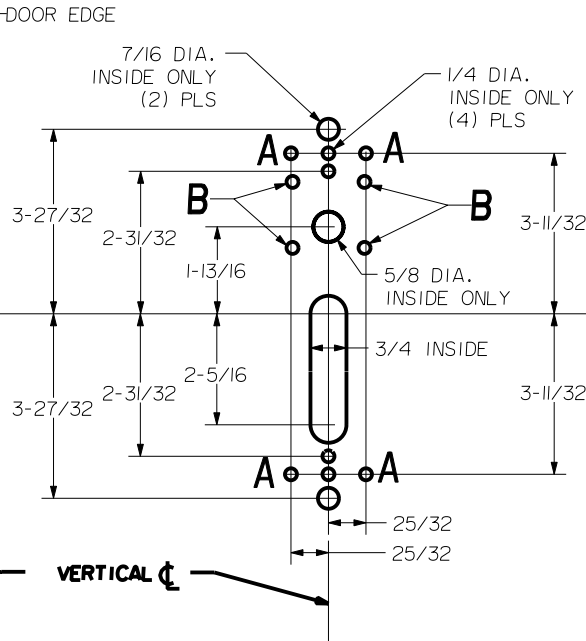
DRILL AND TAP FOR #10-24 SCREWS

ACCOMMODATES 1/4 TO 3/4 GAP

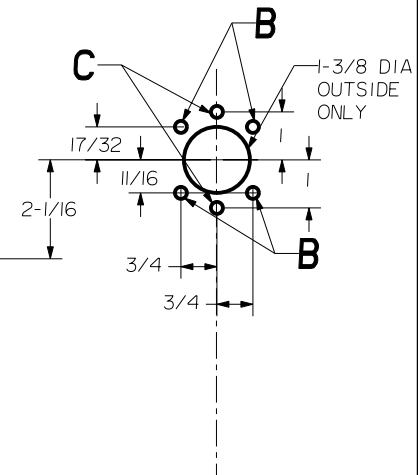
LBR DEVICES:
 OMIT BOTTOM BOLT MACHINING.
 FIRE BOLT REQ'D FOR FL DEVICES
 SEE DRAWING 0297-II-000 FOR DETAILS


HOLE (4) PLS A	DEVICES	TRIMS	HOLE B	HOLE C
#10-24 TAP INSIDE ONLY	2803.FL2803	CO3	1/4 DIA THRU DOOR	1/4 DIA OUTSIDE ONLY

DEVICE SIDE MACHINING



TRIM SIDE MACHINING



 Precision Hardware a Division of Stanley Security Solutions, Inc. www.stanleysecuritysolutions.com			
DEVICE SERIES		TRIM SERIES	
2800, FL2800, 2800LBR, FL2800LBR		CO3	
STRIKE NO.	RELEASED DATE	TEMPLATE NO.	REV
S519, S460	5/01/05	HM-2800C	D