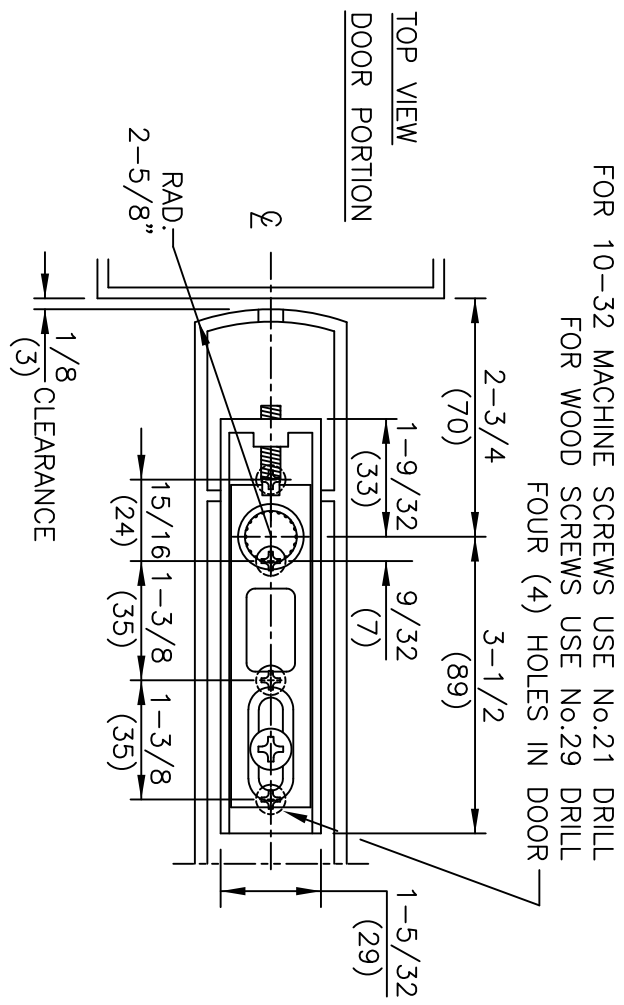
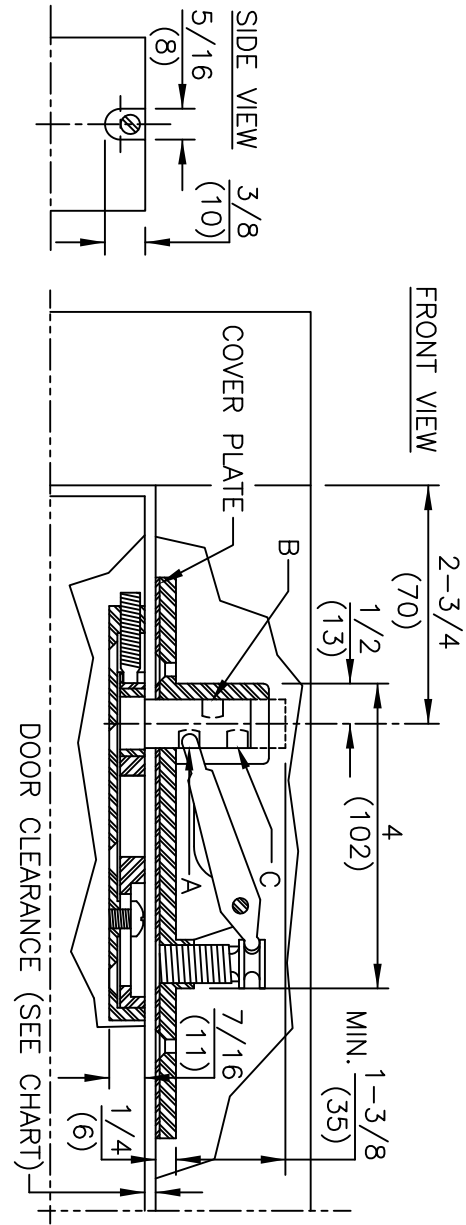
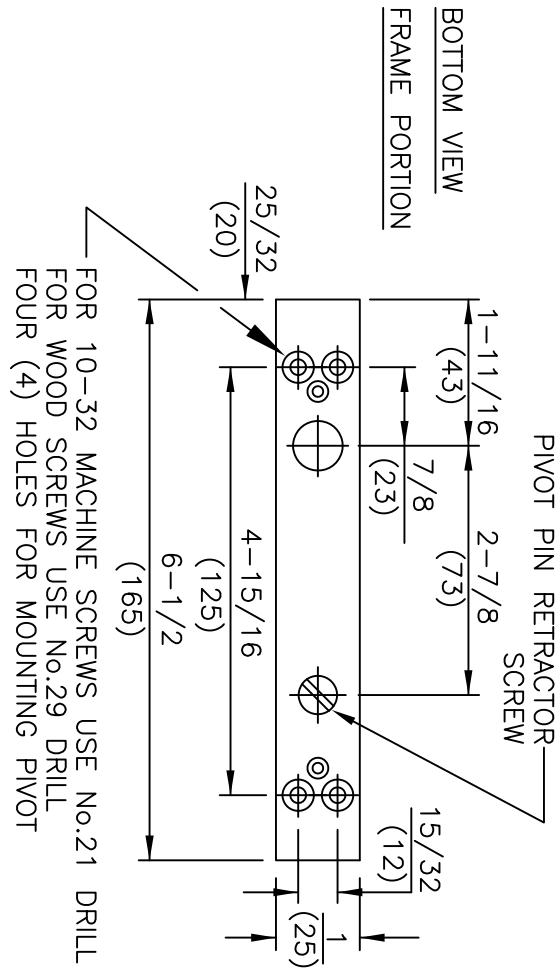


- NOTES**
1. DO NOT SCALE DRAWING.
 2. DIMENSIONS ARE IN INCHES/(MM).
 3. ALL NECESSARY REINFORCING FOR PIVOTS BY OTHERS.
 4. PIVOT PIN DIAMETER .591/(15MM).
 5. PIVOT PIN PROJECTION IS ADJUSTABLE.
- SEE CHART FOR DOOR CLEARANCES.

| | | DOOR CLEARANCE | |
|----------|--------------|----------------|--|
| POSITION | STANDARD PIN | EXTENDED PIN | |
| A | 1/8"(3) | 3/4"(19) | |
| B | 3/8"(10) | 1"(25) | |
| C | 3/4"(19) | 1-5/16"(33) | |

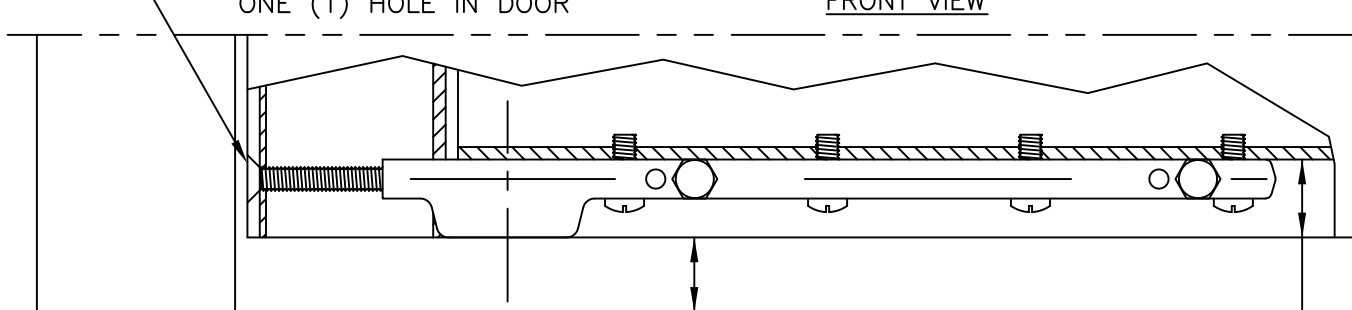


NOTES

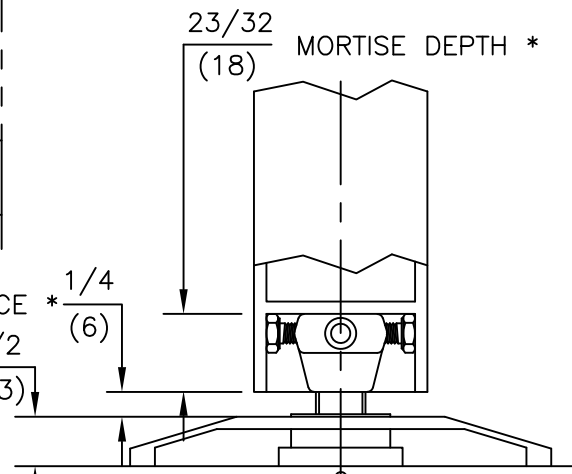
1. DO NOT SCALE DRAWING.
2. DIMENSIONS ARE IN INCHES/(MM).
3. ALL NECESSARY REINFORCEMENT FOR ARM BY OTHERS.

No.10 DRILL - CSK. 90° X 1/2" DIA.
 ONE (1) HOLE IN DOOR

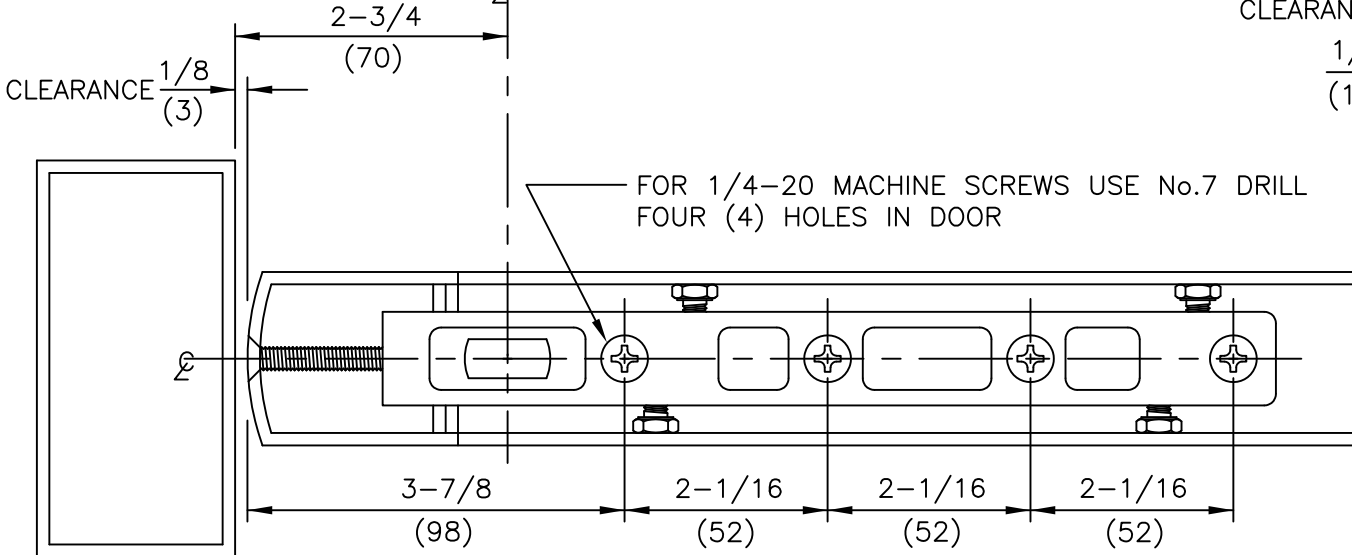
FRONT VIEW



THRESHOLD



FINISHED FLOOR



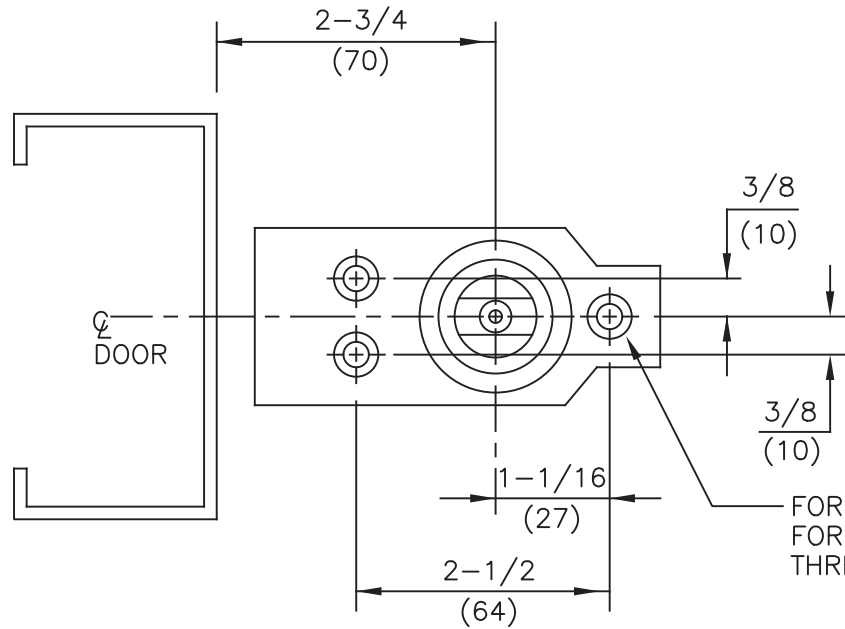
BOTTOM VIEW

| SPINDLE EXT. | CLEARANCE * | MORTISE DEPTH * |
|--------------|-------------|-----------------|
| STD. | 3/4" | 23/32" |
| 5mm | 15/16" | 23/32" |
| 7.5mm | 1" | 23/32" |
| 10mm | 1-1/8" | 23/32" |
| 15mm | 1-5/16" | 23/32" |
| 20mm | 1-1/2" | 23/32" |
| 25mm | 1-11/16" | 23/32" |
| 30mm | 1-15/16" | 23/32" |
| 35mm | 2-1/8" | 23/32" |
| 40mm | 2-5/16" | 23/32" |
| 45mm | 2-1/2" | 23/32" |
| 50mm | 2-11/16" | 23/32" |

ITEM No. 7422
 CENTER HUNG BOTTOM ARM
 ALUMINUM DOOR
 FOR USE WITH 7471K FLOOR BEARING



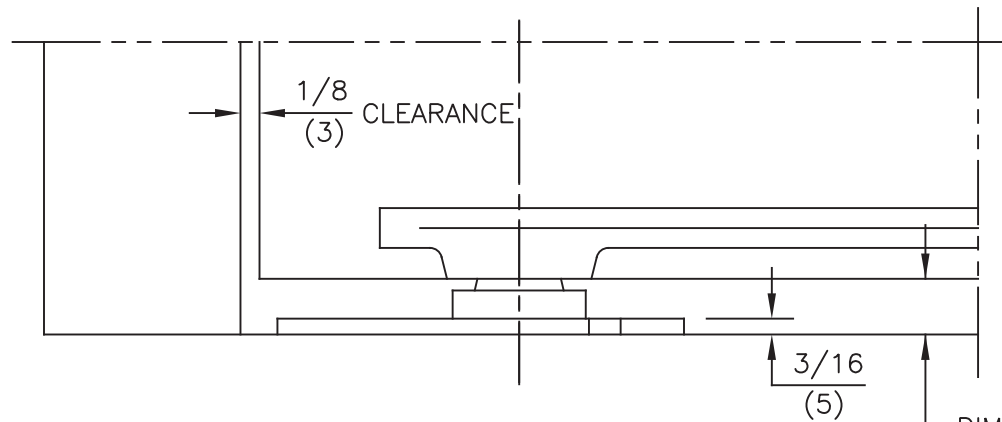
dormakaba USA, INC.
 800 523 8483



NOTES:

1. DO NOT SCALE DRAWING.
2. DIMENSIONS ARE IN INCHES\MM.
3. DIMENSION "A" IS DISTANCE FROM BOTTOM OF PIVOT TO BOTTOM OF ARM. WHEN BOTTOM ARM IS INSTALLED TO THE STANDARD TEMPLATE, THIS IS ALSO EQUAL TO THE BOTTOM DOOR CLEARANCE.

FOR WOOD FLOORS USE 1/8" DRILL
 FOR CONCRETE FLOORS USE 1/4" DRILL 1" DEEP
 THREE (3) HOLES



DIM. "A"
 SEE NOTE #3

| SPINDLE SIZE | DIM. "A" |
|--------------|-------------|
| STD. | 3/4 (19) |
| 5mm | 7/8 (22) |
| 10mm | 1-1/16 (27) |
| 15mm | 1-1/4 (32) |
| 20mm | 1-7/16 (37) |
| 25mm | 1-5/8 (42) |
| 30mm | 1-7/8 (47) |
| 35mm | 2-1/16 (52) |
| 40mm | 2-1/4 (57) |
| 45mm | 2-7/16 (62) |

NOT TO SCALE. MEASUREMENTS ARE FOR REFERENCE ONLY. NOT A DRILLING TEMPLATE.

ITEM No. 7471K
 CENTER HUNG FLOOR BEARING INSTALLATION
 FOR USE WITH 7421, 7422, BOTTOM ARMS

