

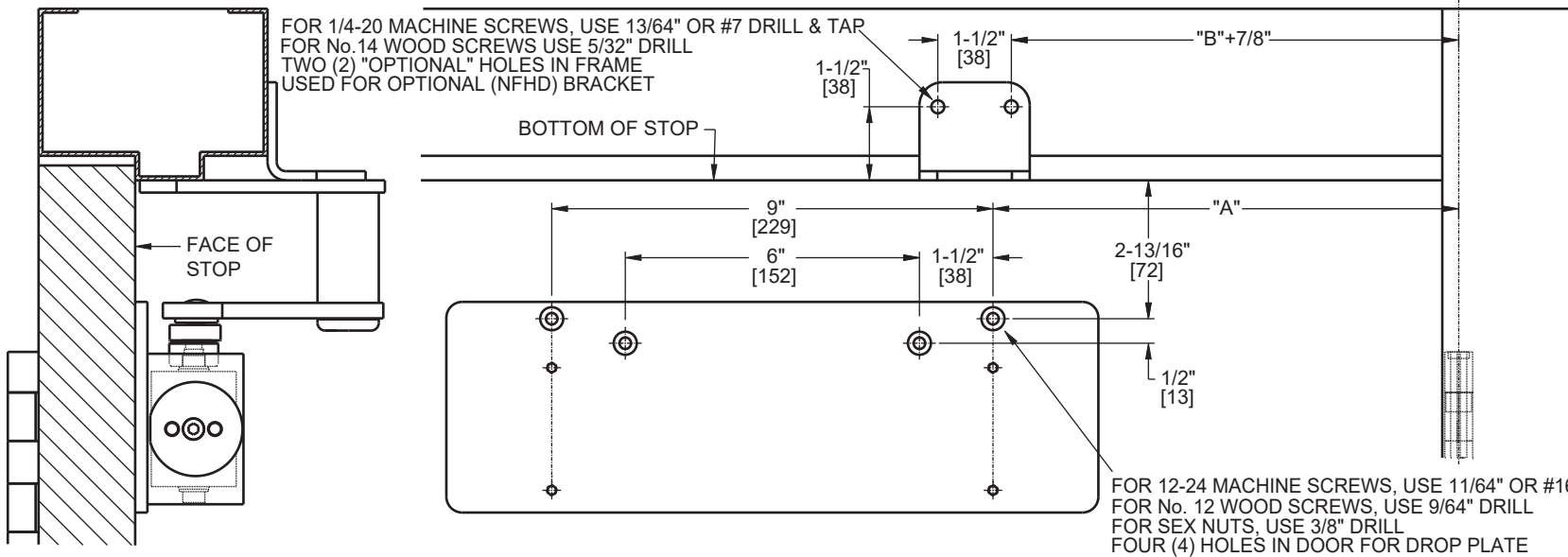
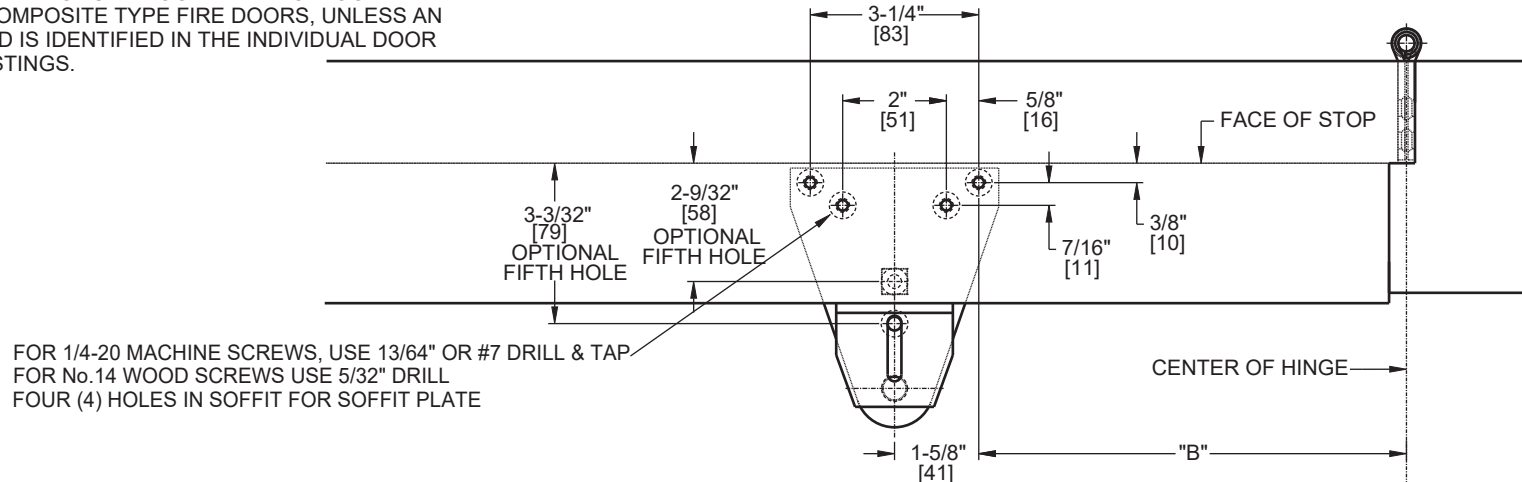
Door Closer Models: HD8016 and HD8056 SPA SP-6 Parallel Arm Installation [Push Side Mount] With Drop Spacer, Optional NFHD Bracket, With Drop Plate DP80 Drilling Instructions

For online instructions, assistance or warranty information:
Call 1-800-392-5209 or visit <https://dhwsupport.dormakaba.com/hc/en-us>

NOTES:

1. DO NOT SCALE DRAWING.
2. DIMENSIONS ARE IN INCHES/[MM].
3. RIGHT HAND DOOR SHOWN.
4. CAUTION: SEX NUTS ARE REQUIRED FOR ATTACHMENT OF COMPONENTS TO UNREINFORCED DOORS AND TO WOOD OR PLASTIC FACED COMPOSITE TYPE FIRE DOORS, UNLESS AN ALTERNATIVE METHOD IS IDENTIFIED IN THE INDIVIDUAL DOOR MANUFACTURER'S LISTINGS.

ANGLE OF MAX OPENING	DIM."A" DROP PLATE	DIM."B" SOFFIT
100°	11-7/16" [291]	10-1/8" [257]
180°	7-5/8" [194]	6-5/16" [160]



Not to scale. Measurements are for reference only.
Not a drilling template.