

Door Closer Models: EHD9016 Heavy-Duty Parallel Arm Installation [SPA] [Push Side Mount] Template/Drilling Instructions

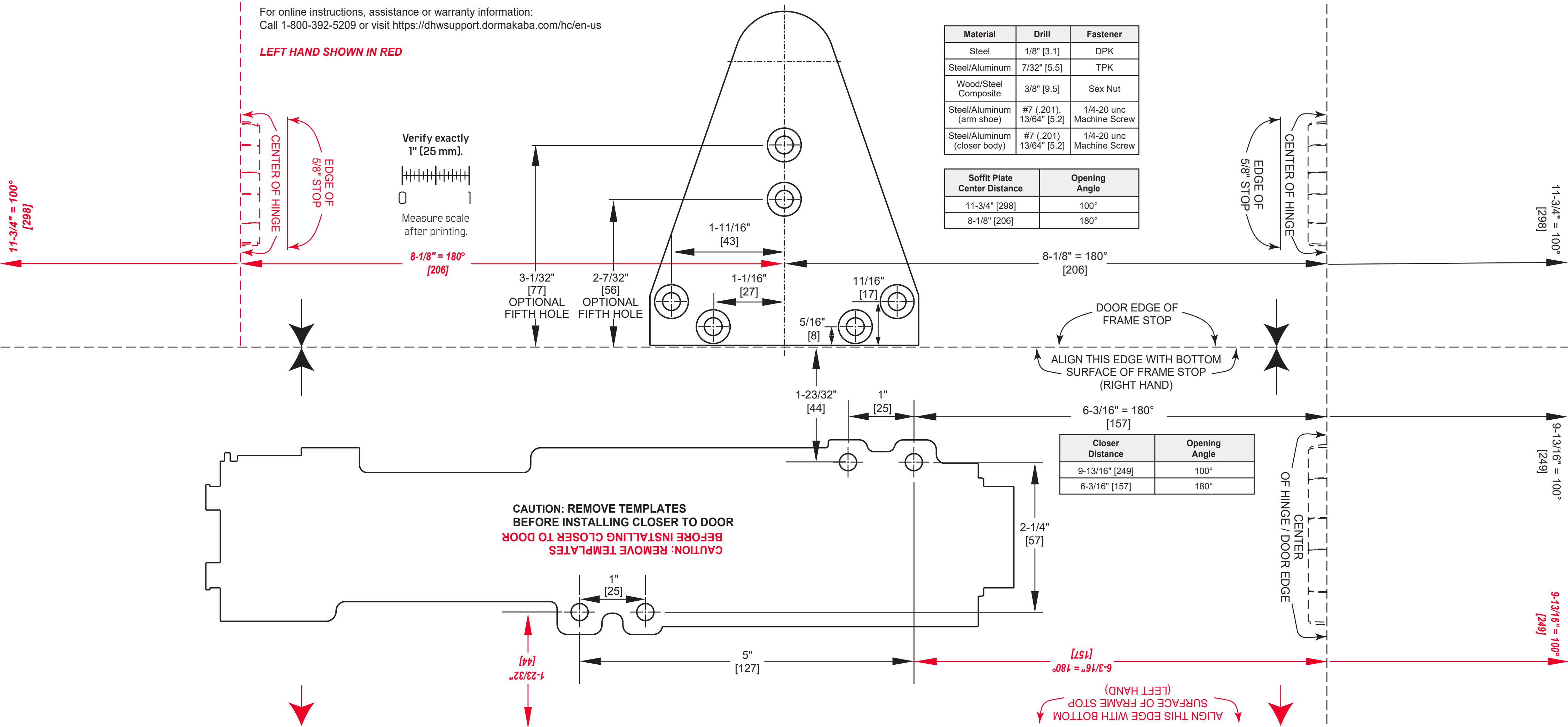


For online instructions, assistance or warranty information:
Call 1-800-392-5209 or visit <https://dhwsupport.dormakaba.com/hc/en-us>

LEFT HAND SHOWN IN RED

Material	Drill	Fastener
Steel	1/8" [3.1]	DPK
Steel/Aluminum	7/32" [5.5]	TPK
Wood/Steel Composite	3/8" [9.5]	Sex Nut
Steel/Aluminum (arm shoe)	#7 (.201), 13/64" [5.2]	1/4-20 unc Machine Screw
Steel/Aluminum (closer body)	#7 (.201), 13/64" [5.2]	1/4-20 unc Machine Screw

Soffit Plate Center Distance	Opening Angle
11-3/4" [298]	100°
8-1/8" [206]	180°



Closer Distance	Opening Angle
9-13/16" [249]	100°
6-3/16" [157]	180°

CAUTION: REMOVE TEMPLATES BEFORE INSTALLING CLOSER TO DOOR
CAUTION: REMOVE TEMPLATES BEFORE INSTALLING CLOSER TO DOOR

ALIGN THIS EDGE WITH BOTTOM SURFACE OF FRAME STOP (LEFT HAND)