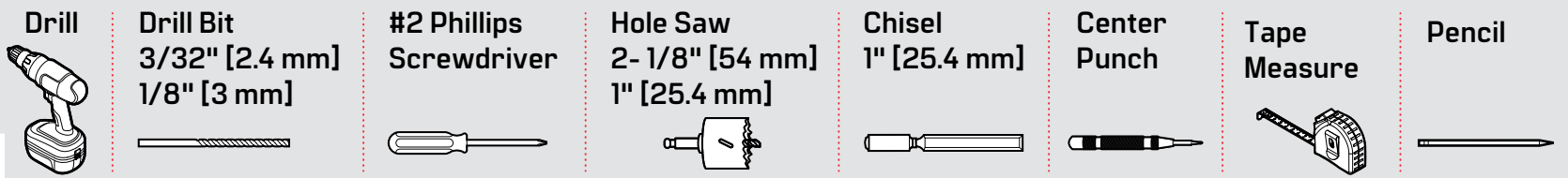
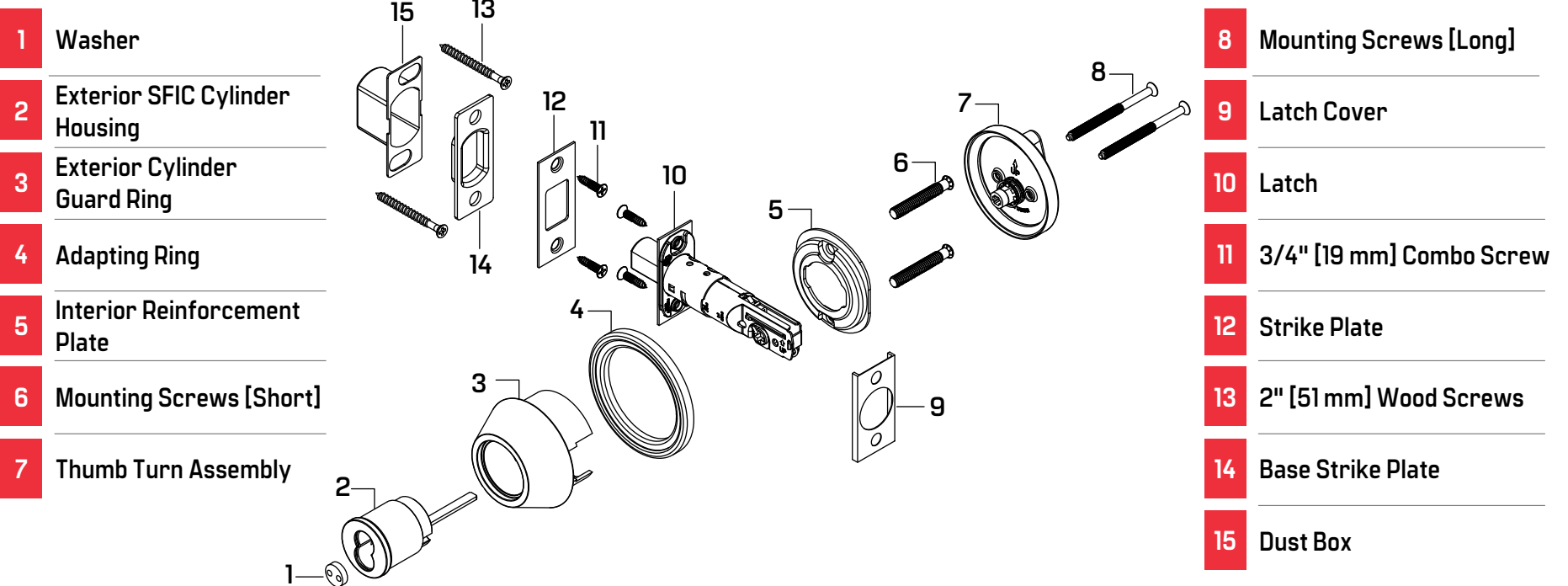


# 6T Single / Double Cylinder Deadbolt Installation Instructions

## TOOLS NEEDED



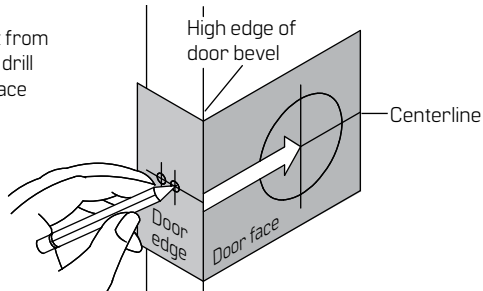
## OVERVIEW



## 6T Single / Double Cylinder Deadbolt Installation Instructions

### 1 MARK DOOR WITH TEMPLATE.

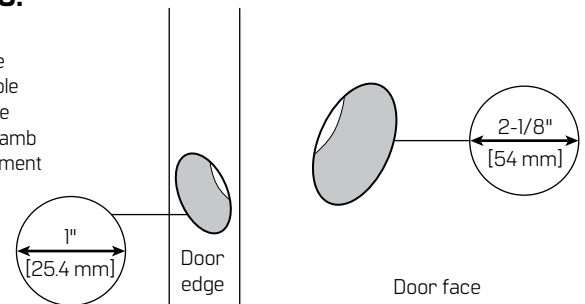
**NOTE:** The suggested height from the bottom of the door to the drill point centerline of the door face is 39-9/16" [1005 mm].



- 1 Fold the template and place it in position on the high edge of the door bevel at the desired height from the floor.
- 2 Mark the drill point for the center of the door edge.
- 3 Select a 2-3/8" [60 mm] or a 2-3/4" [70 mm] backset as desired.
- 4 Mark the drill point for the center of the door face.

### 2 DRILL HOLES.

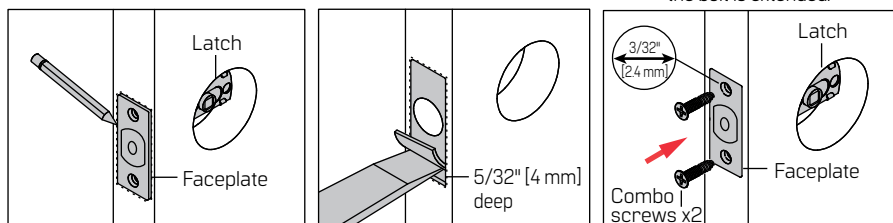
**CAUTION:** Check the center of the latch hole for alignment with the strike center on the jamb to ensure free movement of the latch bolt.



- 1 Drill a 2-1/8" [54 mm] dia. hole on the door face, from both sides to avoid wood splitting.
- 2 Drill a 1" [25.4 mm] dia. through hole on the door edge for the latch.

### 3 INSTALL LATCH.

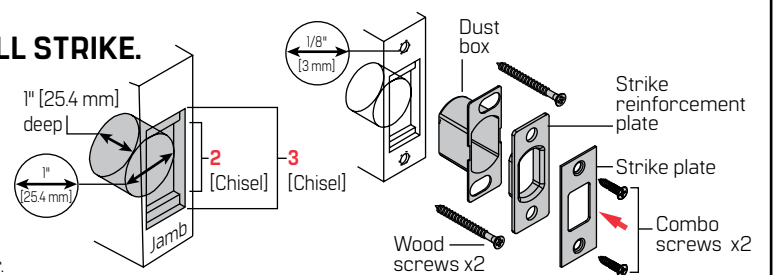
**WARNING:** Do not hammer the latch if the bolt is extended.



- 1 Insert the latch into the hole and keep it parallel to the door face.
- 2 Trace the outline of the faceplate and remove the latch.
- 3 Chisel to a depth of 5/32" [4 mm] or until the faceplate is flush with the door edge.
- 4 Insert the latch and position the faceplate on the door edge and mark the two screw holes.
- 5 Drill two 3/32" [2.4 mm] holes, 1/4" [13 mm] deep.
- 6 Insert the latch and tighten the combo screws.

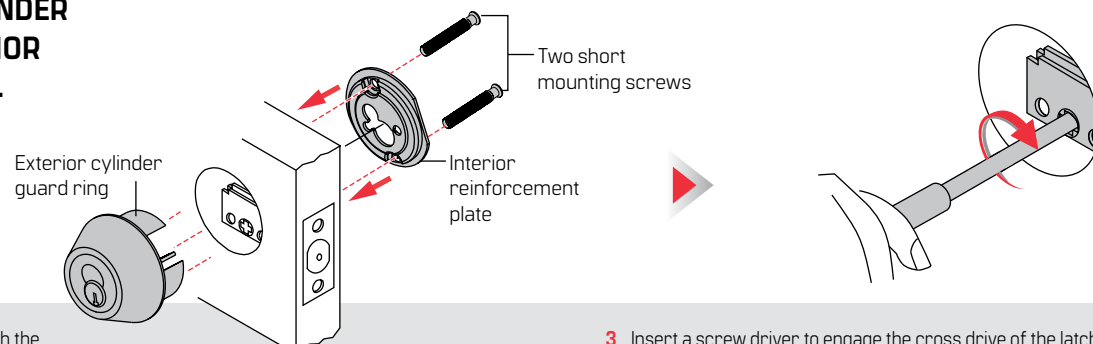
### 4 INSTALL STRIKE.

**CAUTION:** Check the center of the strike hole for alignment with the latch hole center on the door.



- 1 Drill a 1" [25.4 mm] dia. hole, a minimum of 1" [25.4 mm] deep on the jamb.
- 2 Mark the outline of the strike and chisel to a width of 1" [25.4 mm], length of 1-1/2" [38 mm] and depth of 3/8" [9.5 mm].
- 3 Cut out the jamb with a chisel to a width of 1-1/8" [29 mm], length of 2-3/4" [70 mm] and depth of 1/8" [3 mm].
- 4 Position the strike on the door jamb and mark the two screw holes.
- 5 Drill two 1/8" [3 mm] dia. holes, 1-1/2" [38 mm] deep.
- 6 Insert the dust box and position the wood screws to the right or left of the combo screws and and tighten.
- 7 Insert the strike reinforcement plate and the strike together and tighten the combo screws.

### 5 INSTALL EXTERIOR CYLINDER GUARD RING AND INTERIOR REINFORCEMENT PLATE.



- 1 Insert the two short mounting screws through the interior reinforcement plate to engage the tapped holes of the exterior cylinder guard ring.
- 2 Tighten the two short mounting screws until the lock is firm.
- 3 Insert a screw driver to engage the cross drive of the latch.
- 4 Project and retract the latch bolt and adjust the exterior and interior parts as needed to ensure the smooth operation of the latch.
- 5 Tighten the two short mounting screws firmly.

**Verify exactly 1" [25.4 mm].**

Measure scale after printing.

Fold on the dashed line and fit on the door edge.

Drill 1" [25.4 mm] hole at center of door edge.

For one-sided without cover, only drill 1-3/16" [30 mm] deep on inside.

2-3/8" [60 mm] Backset

2-3/4" [70 mm] Backset

ø 2-1/8" [54 mm]

1-3/4" [45 mm] 1-3/8" [35 mm] 1-9/16" [40 mm]

**CAUTION:**

- Do not install the locks before the doors are painted.
- Refrain from using heavy or sharp-edged tools when installing the lockset.
- To avoid oxidation or scratching the lockset's finish, avoid abrasive cleaning products, acidic or caustic cleaning products, bleach, solvents or steel wool.

**Important! Check the lock backset before drilling.**

Template to scale 1 : 1, full size.

## 6T Single / Double Cylinder Deadbolt Installation Instructions

### 6 INSTALL EXTERIOR SFIC CYLINDER HOUSING AND TUMB TURN ASSEMBLY.

**CAUTION:** Check to ensure the tailpiece goes through the latch cross drive to engage the interior rosette thumb turn slot.

- 1 Insert the exterior SFIC cylinder housing into the exterior cylinder guard ring.
- 2 Insert the two long mounting screws through the holes of the thumb turn assembly for mounting onto the interior reinforcement plate.
- 3 Tighten the longer mounting screws firmly.
- 4 Test both the key and the thumb turn and complete the necessary adjustments to ensure the smooth operation of the latch.

**COMPLETE**

### INSTRUCTIONS FOR INSTALLING DOUBLE CYLINDER DEADBOLTS

- 1 Install the exterior cylinder per point 5 for a single cylinder deadbolt.
- 2 Install the interior cylinder by engaging the interior tailpiece with the exterior tailpiece through the latch cross drive.
- 3 Press the interior cylinder against the door making certain the tailpiece is properly positioned in the latch cross drive.
- 4 Insert the two mounting machine screws through the tapped holes of the exterior cylinder and tighten.

### DEADBOLT BACKSET ADJUSTMENT

**CAUTION:** Be sure the latch cam is upright before making any backset adjustment.

- 1 This latch is set for a 2-3/8" [60 mm] backset.
- 2 Rotate 180°.
- 3 Your latch is now set for a 2-3/4" [70 mm] backset.



For online instructions visit:  
<https://dhwsupport.dormakaba.com/hc/en-us>  
 For assistance or warranty information:  
 Call 1-800-392-5209 or visit  
<https://dhwsupport.dormakaba.com/hc/en-us>

English



Para obtener instrucciones línea, visite:  
<https://dhwsupport.dormakaba.com/hc/en-us>  
 Si desea ayuda o información sobre la garantía:  
 llame al 1-800-392-5209 o visite  
<https://dhwsupport.dormakaba.com/hc/en-us>

El idioma español



Pour obtenir des directives en ligne, consultez le site :  
<https://dhwsupport.dormakaba.com/hc/en-us>  
 Pour de l'aide ou des informations sur la garantie:  
 Veuillez appeler le 1-800-392-5209 ou visiter  
<https://dhwsupport.dormakaba.com/hc/en-us>

El idioma francés

**Warning:** This Manufacturer advises that no lock can provide complete security by itself. This lock may be defeated by forcible or technical means, or evaded by entry elsewhere on the property. No lock can substitute for caution, awareness of your environment, and common sense. Builder's hardware is available in multiple performance grades to suit the application. In order to enhance security and reduce risk, you should consult a qualified locksmith or other security professional.

**Advertencia:** Este fabricante ha sabido que no hay cerraduras que puedan proporcionar seguridad completa por sí mismas. Esta cerradura puede fallar forzandola o utilizando medios técnicos o entrando por otra parte del edificio. No hay cerraduras que puedan sustituir precaución, estar al tanto de su entorno y sentido común. Este fabricante también ofrece cerraduras de diferentes grados y rendimientos para ajustarse a su aplicación. Para mejorar la seguridad y reducir riesgos, usted debe consultar con un cerrajero especializado u otro profesional de seguridad.

**Advertissement:** Le fabricant tient à vous aviser qu'aucun verrou ne peut à lui seul offrir une sécurité complète. Ce verrou peut être mis hors d'état par la force ou des moyens techniques ou être évité par l'utilisation d'une autre entrée sur la propriété. Aucun verrou ne peut remplacer la surveillance de votre environnement et le bon sens. La quincaillerie pour le constructeur est offerte selon différents grades de performance pour différentes applications. Afin d'augmenter la sécurité et de réduire le risque, vous devriez consulter un serrurier qualifié ou un autre professionnel de la sécurité.