

1 Technical specifications

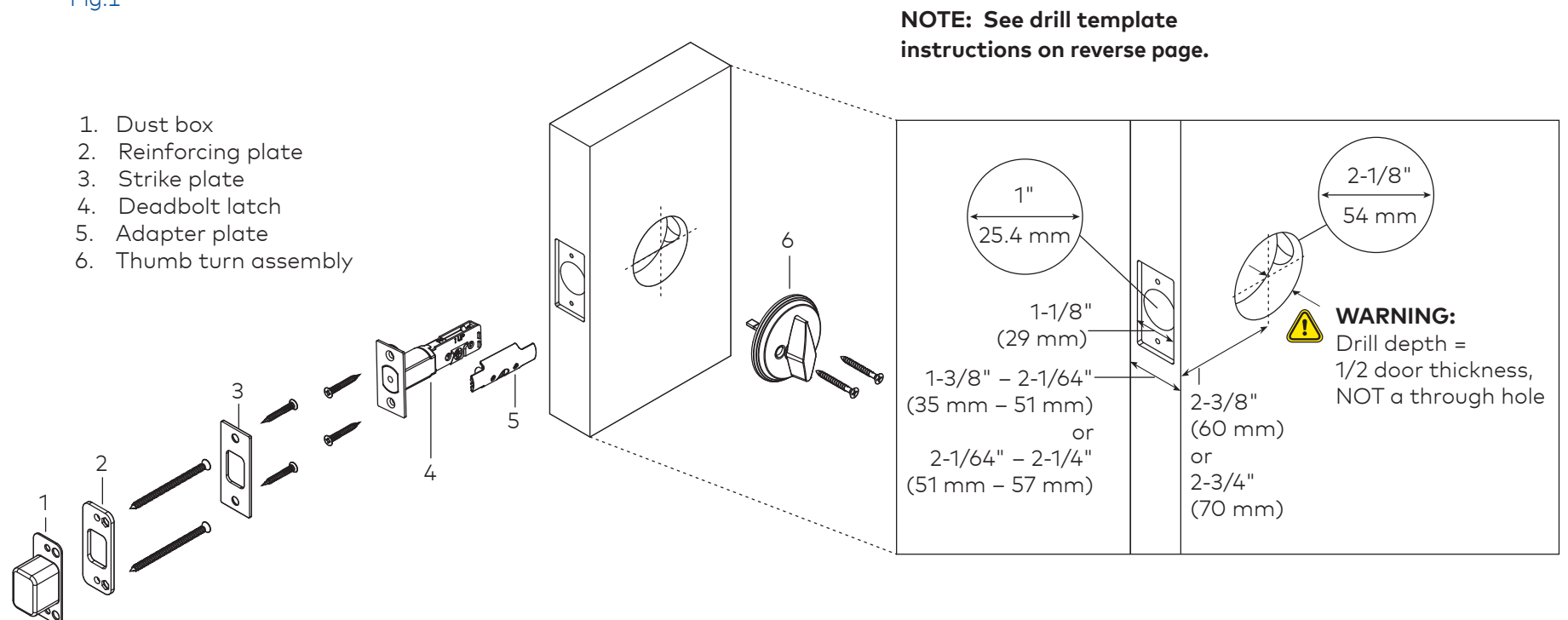
1.1 Tools recommended

Table 1

Drill	Spade bit: 1" (25.4 mm)	#2 and #3 Phillips screwdriver	Pencil
Drill bit: 3/32" (2.4 mm)	2-1/8" (54 mm) hole saw	Level	Ruler
Drill bit: 1/8" (3 mm)	1" (25.4 mm) wood chisel	Center punch	

1.2 Overview

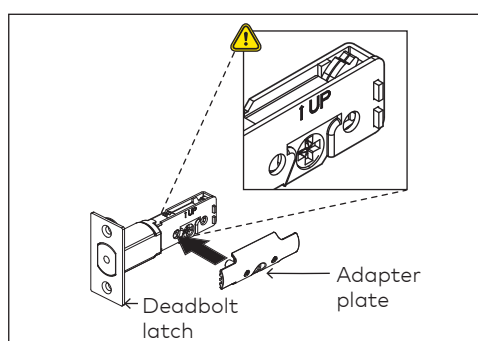
Fig.1



2 Installation instructions

2.1 Install adapter plate.

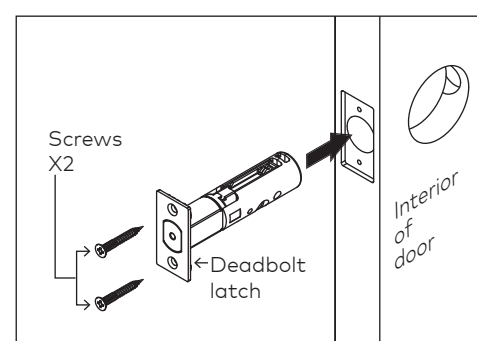
Fig.2



- 2.1.1 Orient the deadbolt latch with the word 'UP' toward the top.
- 2.1.2 Align the adapter plate with the deadbolt latch and secure.

2.2 Install deadbolt latch.

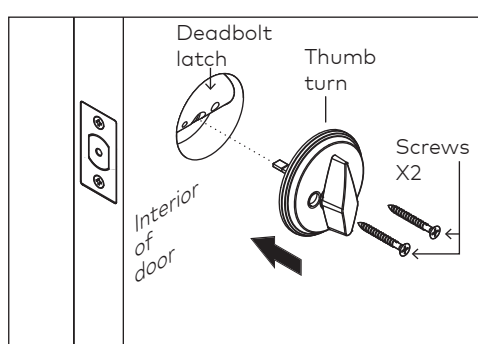
Fig.3



- 2.2.1 Insert the deadbolt latch into the hole.
- 2.2.2 Secure the deadbolt latch to the door with the screws and tighten.

2.3 Install thumb turn.

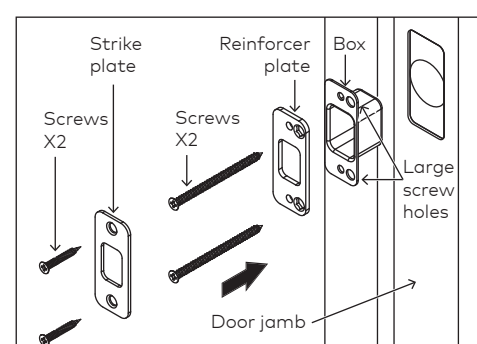
Fig.4



- 2.3.1 Mount the thumb turn assembly to the door, inserting the tail piece into the deadbolt latch crank in the horizontal position.
- 2.3.2 Secure the screws, engaging the exterior assembly and tighten.

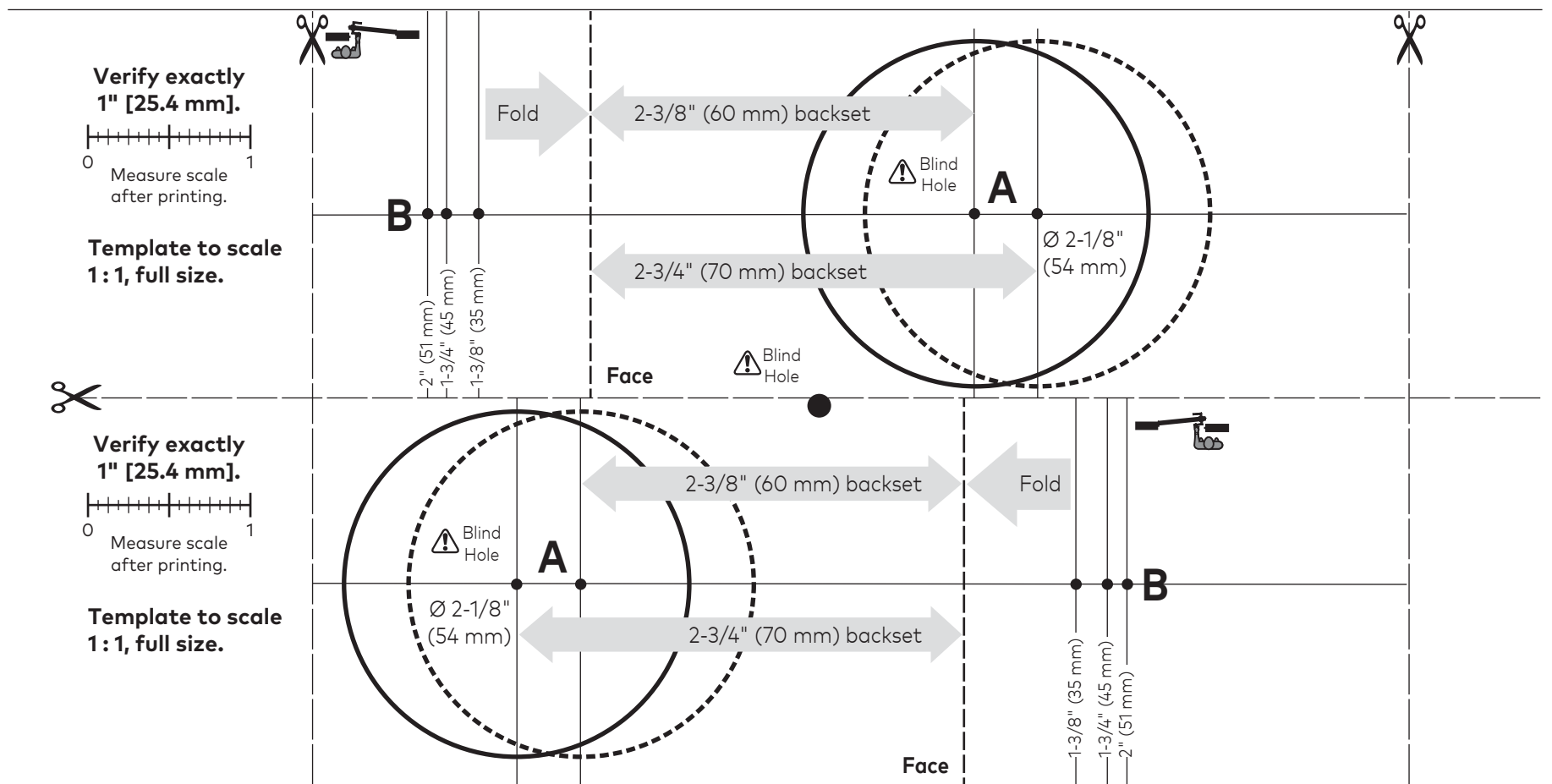
2.4 Install box, reinforcer plate and strike.

Fig.5



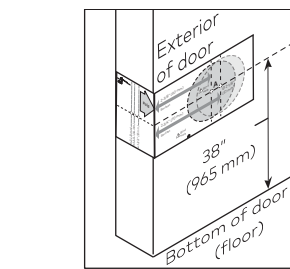
- 2.4.1 Mount the box and the reinforcer plate on the door jamb with the large screw holes oriented toward the door stop.
- 2.4.2 Secure the box and the reinforcer plate to the door jamb with the screws and tighten.
- 2.4.3 Install the strike plate using the screws and tighten.

3 Drilling template



4 Drilling and door prep instructions

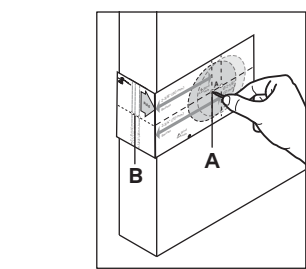
4.1 Select template.



NOTE:
Suggested height from bottom of the door to centerline of hole A is 38" (965 mm).

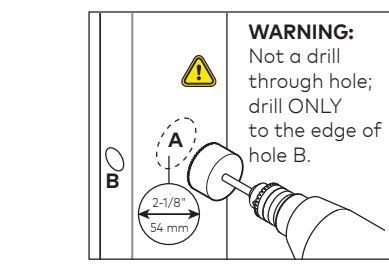
- 4.1.1 Select the appropriate template.
4.1.2 Fold the template and place it in position on the high edge of the door bevel.

4.2 Center punch holes.



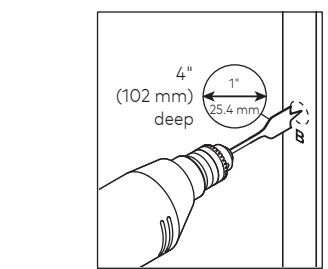
- 4.2.1 Determine the backset of the deadbolt latch and center punch hole A.
4.2.2 Determine the drill point of the center of the door edge and center punch hole B.

4.3 Drill hole A.



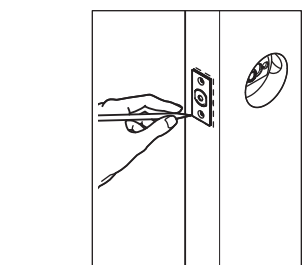
- 4.3.1 Drill a 2-1/8" (54 mm) dia. hole, 1/2" (13 mm) deep, 1/2 the thickness of the door for hole A.

4.4 Drill hole B.



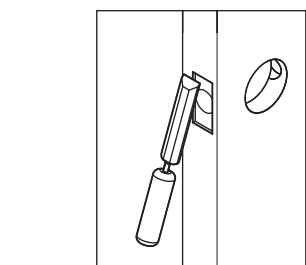
- 4.4.1 Drill a 1" (25.4 mm) dia. hole, 4" (102 mm) deep for hole B.

4.5 Trace faceplate.



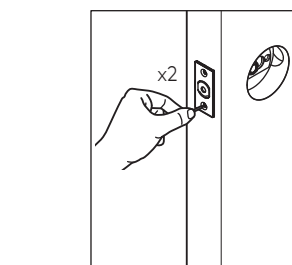
- 4.5.1 Trace the outline of the faceplate and remove the latch.

4.6 Chisel mortise area.



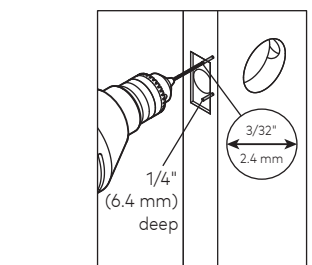
- 4.6.1 Chisel to a depth of 5/32" (4 mm) or until the faceplate is flush with the door edge.

4.7 Mark holes.



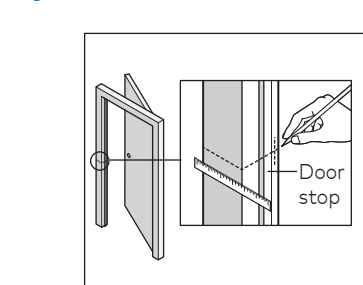
- 4.7.1 Position the faceplate on the door edge and mark the two screw holes.

4.8 Drill faceplate holes.



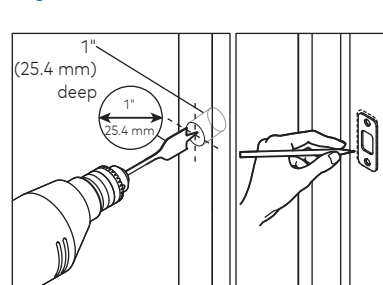
- 4.8.1 Drill two 3/32" (2.4 mm) dia. holes, 1/4" (13 mm) deep.

4.9 Mark center of strike.



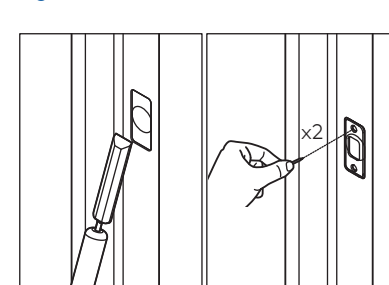
- 4.9.1 Locate and mark the center of the strike by measuring back from the door stop, 1/2 the thickness of the door.

4.10 Drill strike hole. Trace strike outline.



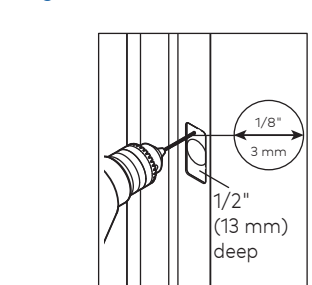
- 4.10.1 Drill a 1" (25.4 mm) dia. hole, 1" (25.4 mm) deep.
4.10.2 Trace the outline of the strike.

4.11 Chisel mortise area. Mark holes.



- 4.11.1 Chisel to a depth of 5/64" (2 mm) or until the strike is flush with the door jamb.
4.11.2 Position the strike on the door jamb and mark the two screw holes.

4.12 Drill strike holes.



- 4.12.1 Drill two 1/8" (3 mm) dia. holes, 1-1/2" (38.1 mm) deep.



For online instructions visit:
<https://dhwsupport.dormakaba.com/hc/en-us>
For assistance or warranty information:
Call 1-800-392-5209 or visit
<https://dhwsupport.dormakaba.com/hc/en-us>