

**Door Closer Models: EHD9016 Door Saver Arm [DS] [Parallel Arm Mount]  
Template/Drilling Instructions**

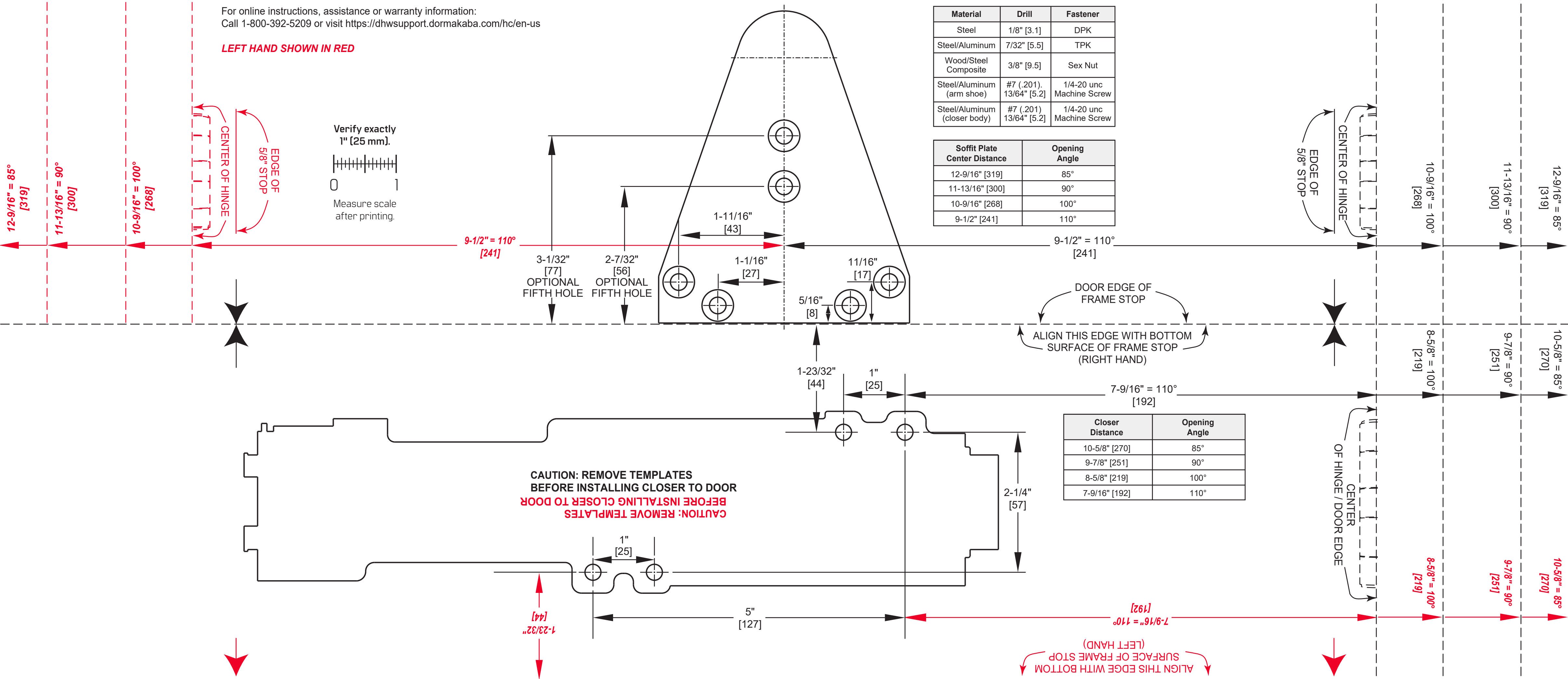


For online instructions, assistance or warranty information:  
Call 1-800-392-5209 or visit <https://dhwsupport.dormakaba.com/hc/en-us>

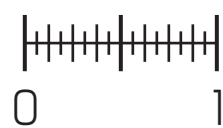
**LEFT HAND SHOWN IN RED**

Material	Drill	Fastener
Steel	1/8" [3.1]	DPK
Steel/Aluminum	7/32" [5.5]	TPK
Wood/Steel Composite	3/8" [9.5]	Sex Nut
Steel/Aluminum (arm shoe)	#7 (.201) 13/64" [5.2]	1/4-20 unc Machine Screw
Steel/Aluminum (closer body)	#7 (.201) 13/64" [5.2]	1/4-20 unc Machine Screw

Soffit Plate Center Distance	Opening Angle
12-9/16" [319]	85°
11-13/16" [300]	90°
10-9/16" [268]	100°
9-1/2" [241]	110°



Verify exactly 1" (25 mm).



Measure scale after printing.

3-1/32" [77] OPTIONAL FIFTH HOLE  
2-7/32" [56] OPTIONAL FIFTH HOLE

DOOR EDGE OF FRAME STOP  
ALIGN THIS EDGE WITH BOTTOM SURFACE OF FRAME STOP (RIGHT HAND)

**CAUTION: REMOVE TEMPLATES BEFORE INSTALLING CLOSER TO DOOR**  
**CAUTION: REMOVE TEMPLATES BEFORE INSTALLING CLOSER TO DOOR**

Closer Distance	Opening Angle
10-5/8" [270]	85°
9-7/8" [251]	90°
8-5/8" [219]	100°
7-9/16" [192]	110°

ALIGN THIS EDGE WITH BOTTOM SURFACE OF FRAME STOP (LEFT HAND)