

Door Closer Models: HD8016 and HD8056
DST Left Hand Parallel
Template/Drilling Instructions

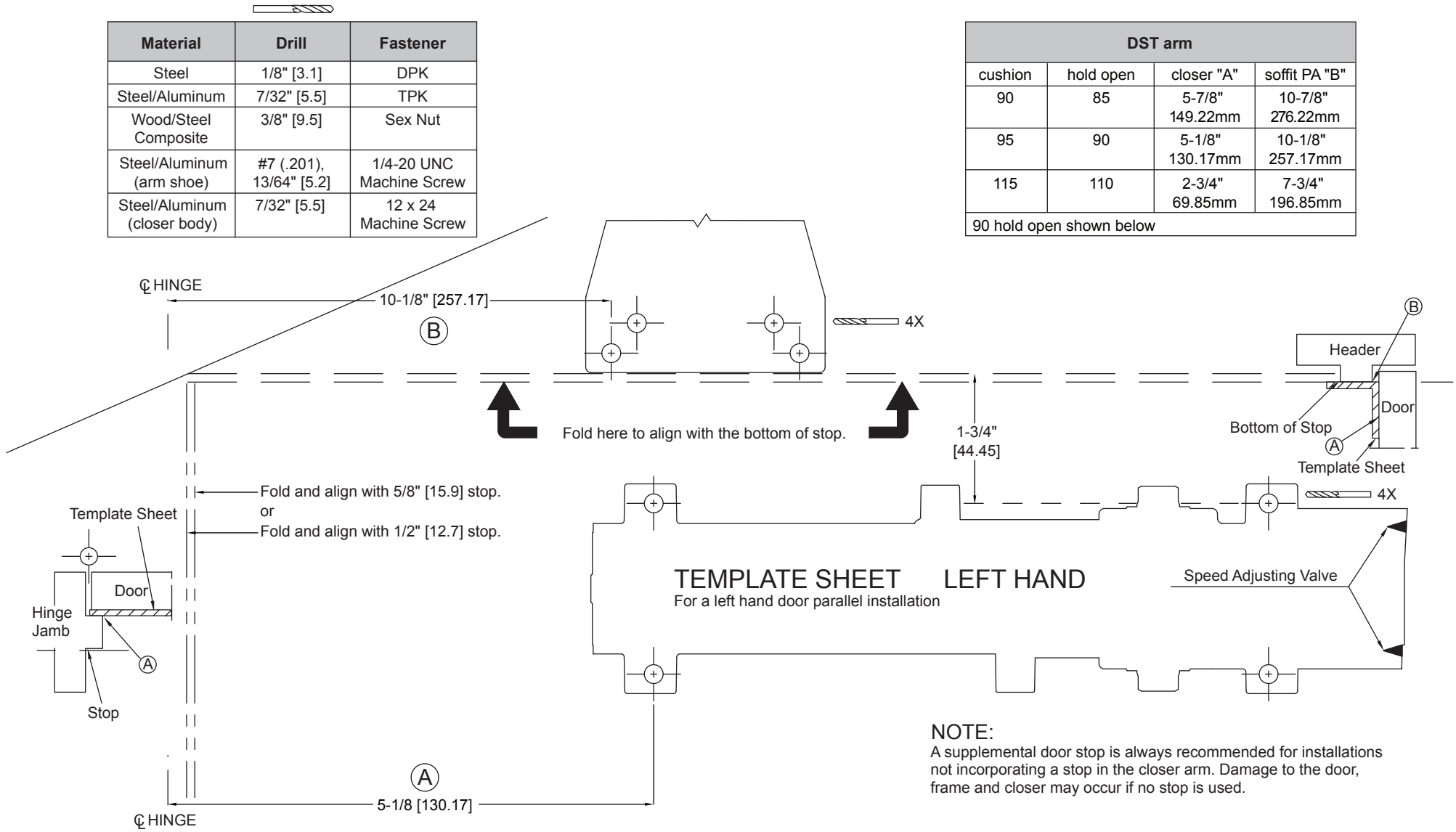
NOTE: Flip Closer, PA Bracket for RH Application

Always consult BEST's website for the latest template at <https://dhwsupport.dormakaba.com/hc/en-us> or call 1-800-392-5209.

Material	Drill	Fastener
Steel	1/8" [3.1]	DPK
Steel/Aluminum	7/32" [5.5]	TPK
Wood/Steel Composite	3/8" [9.5]	Sex Nut
Steel/Aluminum (arm shoe)	#7 (.201), 13/64" [5.2]	1/4-20 UNC Machine Screw
Steel/Aluminum (closer body)	7/32" [5.5]	12 x 24 Machine Screw

DST arm			
cushion	hold open	closer "A"	soffit PA "B"
90	85	5-7/8" 149.22mm	10-7/8" 276.22mm
95	90	5-1/8" 130.17mm	10-1/8" 257.17mm
115	110	2-3/4" 69.85mm	7-3/4" 196.85mm

90 hold open shown below



TEMPLATE SHEET LEFT HAND
 For a left hand door parallel installation

NOTE:
 A supplemental door stop is always recommended for installations not incorporating a stop in the closer arm. Damage to the door, frame and closer may occur if no stop is used.