

**Door Closer Models: HD8016 and HD8056**  
**SDS Left Hand Parallel**  
**Template/Drilling Instructions**

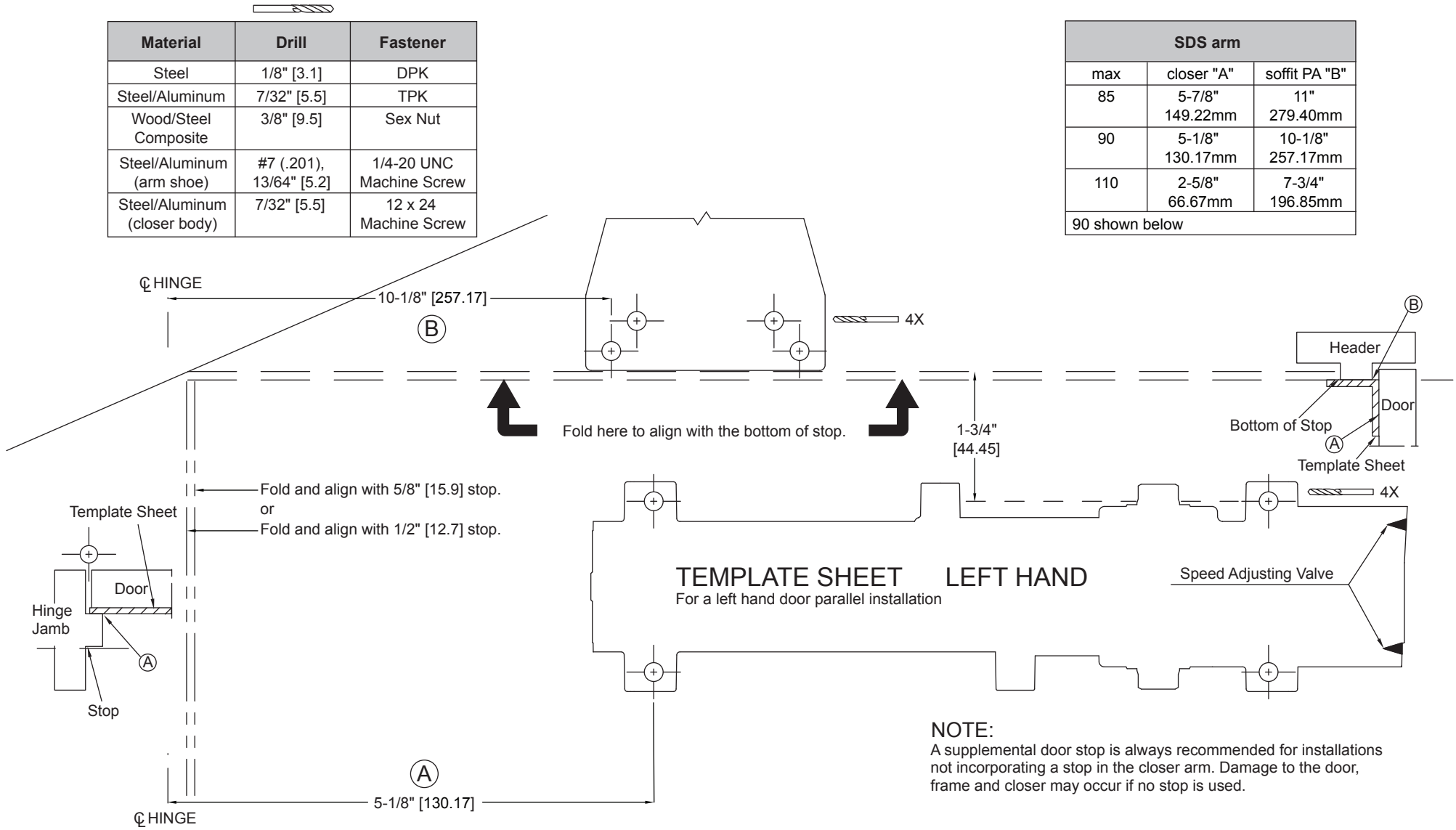
NOTE: Flip Closer, PA Bracket for RH Application

Always consult BEST's website for the latest template at  
<https://dhwsupport.dormakaba.com/hc/en-us> or call 1-800-392-5209.



Material	Drill	Fastener
Steel	1/8" [3.1]	DPK
Steel/Aluminum	7/32" [5.5]	TPK
Wood/Steel Composite	3/8" [9.5]	Sex Nut
Steel/Aluminum (arm shoe)	#7 (.201), 13/64" [5.2]	1/4-20 UNC Machine Screw
Steel/Aluminum (closer body)	7/32" [5.5]	12 x 24 Machine Screw

SDS arm		
max	closer "A"	soffit PA "B"
85	5-7/8" 149.22mm	11" 279.40mm
90	5-1/8" 130.17mm	10-1/8" 257.17mm
110	2-5/8" 66.67mm	7-3/4" 196.85mm
90 shown below		



**NOTE:**  
 A supplemental door stop is always recommended for installations not incorporating a stop in the closer arm. Damage to the door, frame and closer may occur if no stop is used.