

Door Closer Models: HD8016 and HD8056 JT Jamb Track Installation [Pull Side Mount] With Back Plate BP80 Drilling Instructions

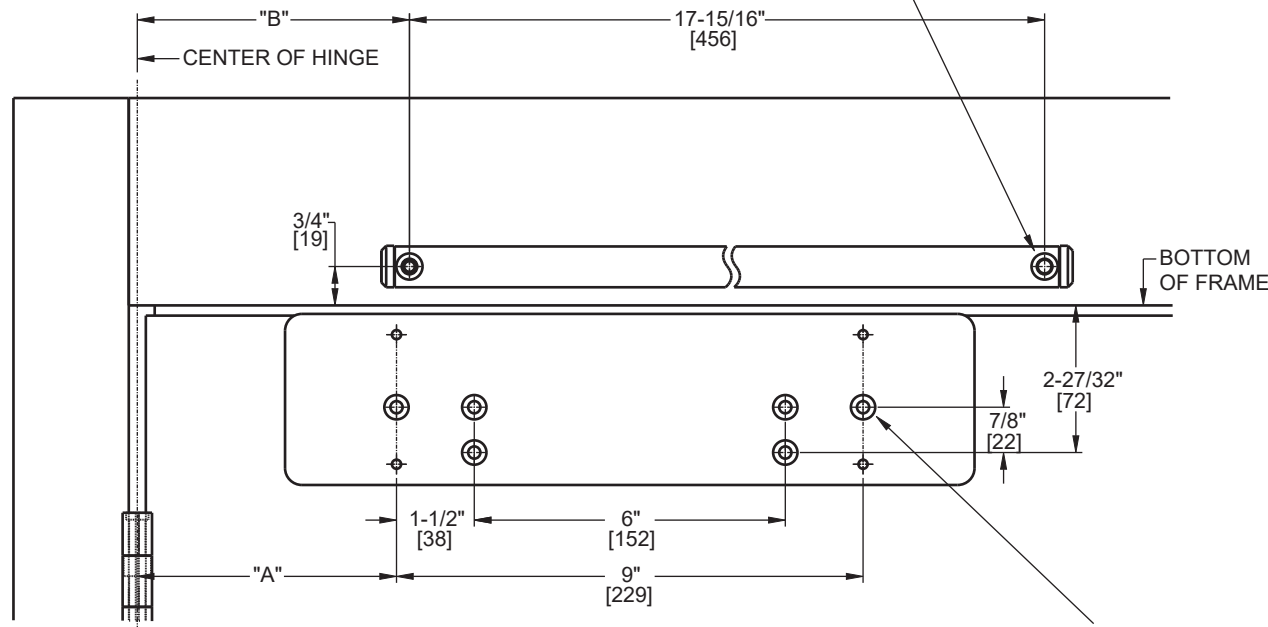
For online instructions, assistance or warranty information:
Call 1-800-392-5209 or visit <https://dhwsupport.dormakaba.com/hc/en-us>

NOTES:

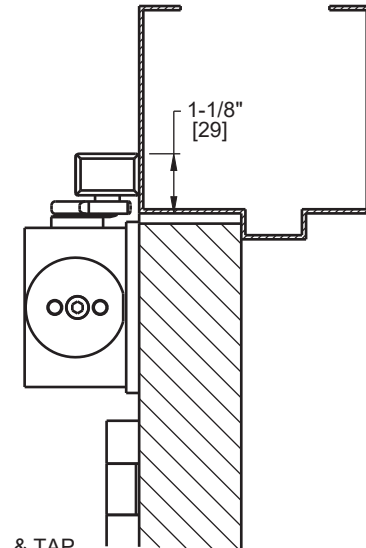
1. DRAWING IS NOT TO SCALE.
2. DIMENSIONS ARE IN INCHES / [MM].
3. RIGHT HAND DOOR SHOWN.
4. CAUTION: SEX NUTS ARE REQUIRED FOR ATTACHMENT OF COMPONENTS TO UNREINFORCED DOORS AND TO WOOD OR PLASTIC FACED COMPOSITE TYPE FIRE DOORS, UNLESS AN ALTERNATIVE METHOD IS IDENTIFIED IN THE INDIVIDUAL DOOR MANUFACTURER'S LISTINGS.
5. MAXIMUM OPENING 160°. (ALLOW CLEARANCE FOR CLOSER COVER)
6. DPK FASTENERS FOR STEEL DOOR & FRAME ONLY.

ANGLE OF MAX OPENING	DIM."A" BACK PLATE	DIM."B" TRACK
85°	6-1/8" [156]	9-3/8" [238]
90°	6-1/8" [156]	8-3/4" [222]
110°	6-1/8" [156]	6-1/2" [165]
160°	5" [127]	5-3/16" [132]

FOR 1/4-20 MACHINE SCREWS, USE 13/64" OR #7 DRILL & TAP
FOR No. 14 WOOD SCREWS, USE 5/32" DRILL
DPK FASTENERS DRILL 1/8" PILOT HOLE
TWO (2) HOLES IN FRAME FOR TRACK



FOR 12-24 MACHINE SCREWS, USE 11/64" OR #16 DRILL & TAP
FOR No. 12 WOOD SCREWS, USE 9/64" DRILL
DPK FASTENERS DRILL 1/8" PILOT HOLE
FOR SEX NUTS USE 3/8" DRILL
SIX (6) HOLES IN DOOR FOR PLATE (SHOWN)



Not to scale. Measurements are for reference only.
Not a drilling template.