

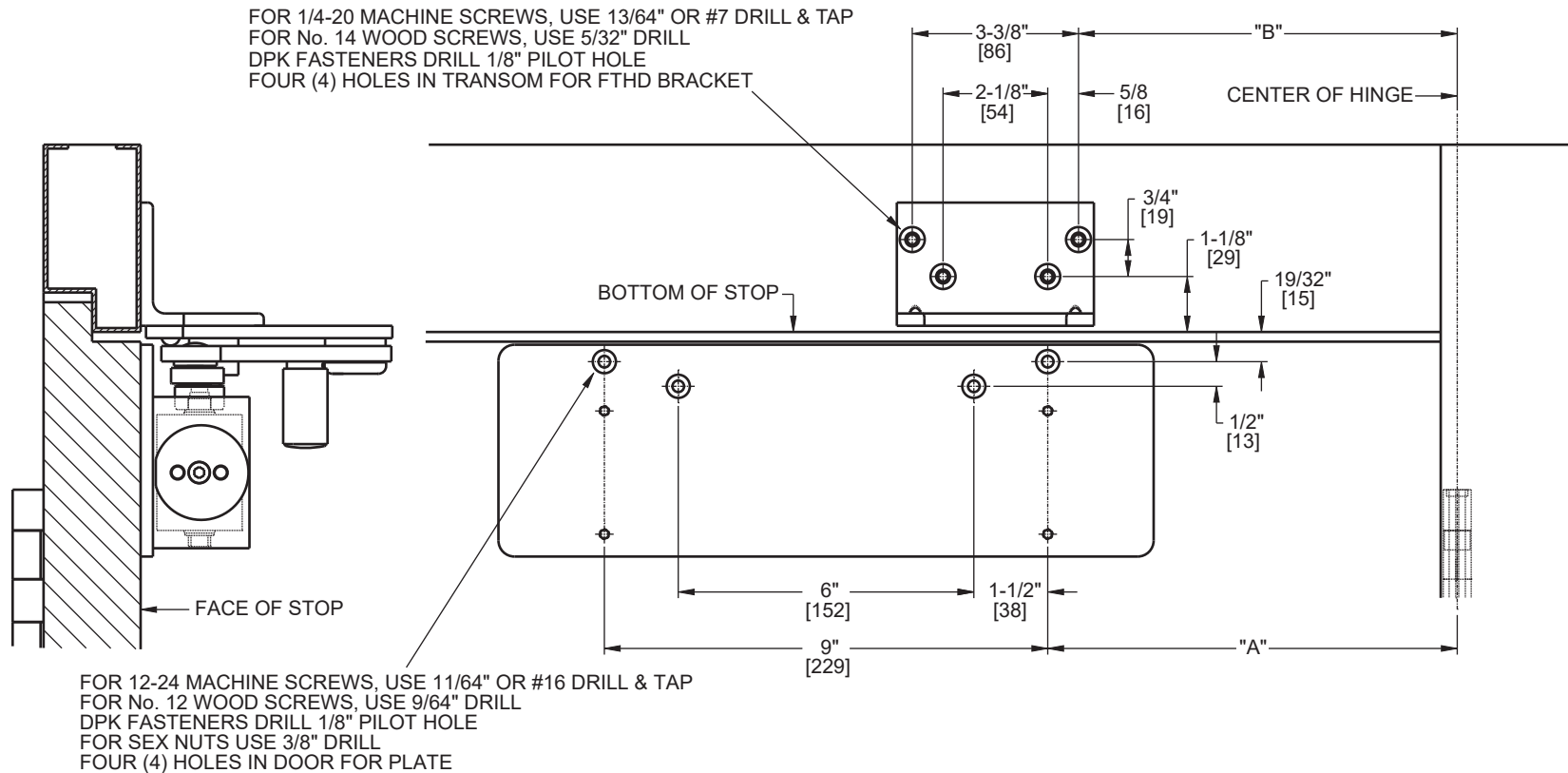
Door Closer Models: HD8016 and HD8056 DST Door Saver Arm Flush Transom Installation [Push Side Mount] With Drop Plate DP80 Drilling Instructions

For online instructions, assistance or warranty information:
Call 1-800-392-5209 or visit <https://dhwsupport.dormakaba.com/hc/en-us>

NOTES:

1. DO NOT SCALE DRAWING.
2. DIMENSIONS ARE IN INCHES/[MM].
3. RIGHT HAND DOOR SHOWN.
4. CAUTION: SEX NUTS ARE REQUIRED FOR ATTACHMENT OF COMPONENTS TO UNREINFORCED DOORS AND TO WOOD OR PLASTIC FACED COMPOSITE TYPE FIRE DOORS, UNLESS AN ALTERNATIVE METHOD IS IDENTIFIED IN THE INDIVIDUAL DOOR MANUFACTURER'S LISTINGS.
5. MINIMUM DOOR WIDTH 26".
6. TEMPLATING BASED ON 4-1/2" X 4-1/2" BUTT HINGES.
7. DPK FASTENERS FOR STEEL DOOR & FRAME ONLY.

ANGLE OF HOLD OPEN	ANGLE OF CUSHION	DIM."A" DROP PLATE	DIM "B" SOFFIT
85°	85°-86°	11-5/8" [295]	10-15/16" [278]
90°	90°-91°	10-7/8" [276]	10-3/16" [259]
100°	100°-101°	9-9/16" [243]	8-7/8" [225]
110°	110°-111°	8-7/16" [214]	7-3/4" [197]



Not to scale. Measurements are for reference only.
Not a drilling template.