

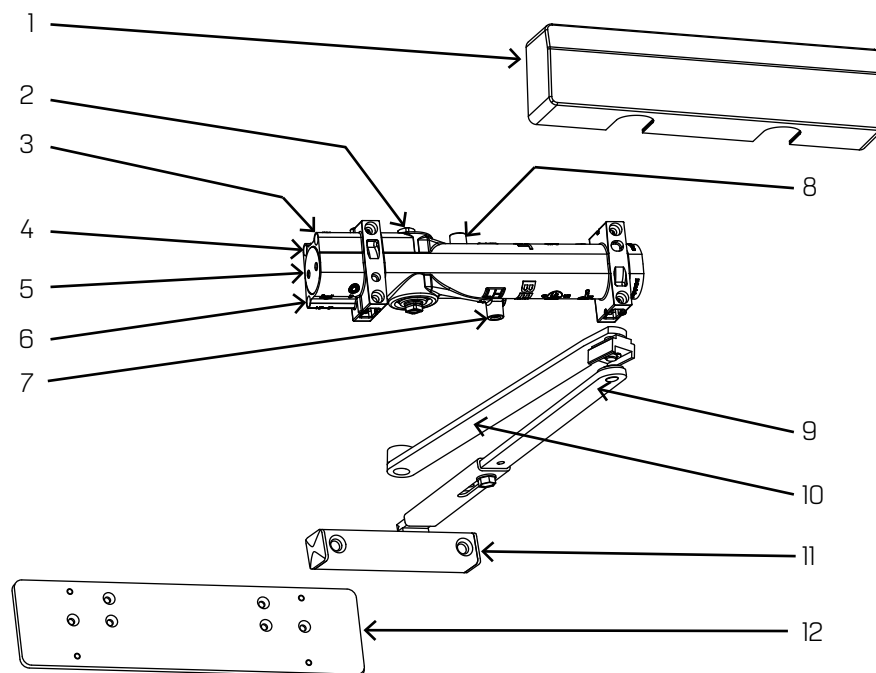
HD8000 SIS, SISJ, SISH, SISJH

Spring stop arm for regular and top jamb mount
with hold open (SISH, SISJH)

Installation Instructions

OVERVIEW

Surface closer components



1 Full cover (standard)

2 Pinion

3 Delayed action adjustment

4 Closing/sweep speed adjustment

5 Closer body

6 Latch speed adjustment

7 Backcheck adjustment

8 Advanced variable backcheck

9 Connecting arm

10 Main arm

11 Damper assembly

12 Backplate (optional)

Table of contents

1	Technical specifications	3
1.1	Overview	3
1.2	Tools recommended	3
1.3	Handing the door	3
1.4	Surface closer components	4
2	Installation - regular mount	4
2.1	Installing the surface closer	4
2.2	Securing damper assembly to door/frame	5
2.3	Securing main arm to closer	5
3	Instructions - top jamb mount	6
3.1	Mounting backplate/top plate (BP 80)	6
3.2	Installing the surface closer	6
3.3	Securing damper assembly to door/frame	7
3.4	Securing main arm to closer	7
4	Adjustments	8
4.1	Adjust closing speeds: sweep, latch, backcheck, delayed action	8
4.2	Adjust optional hold open	8
5	Install cover	9

1 Technical specifications

1.1 Overview



Caution: sex nuts are required for attachment of components to unreinforced doors and to wood or plastic faced composite type fire doors, unless an alternative method is identified in the individual door manufacturer's listings.



Maximum door opening degree is 110°.



Maximum 4 - 1/2" reveal on top jamb mounts for 110° degree openings.



Know the swing of the door which is being installed prior to installation.



Verify closer spring size prior to installation.



Make sure door efficiently operates prior to installing closer.



Do not hammer arm onto spindle. Warranty will be void.

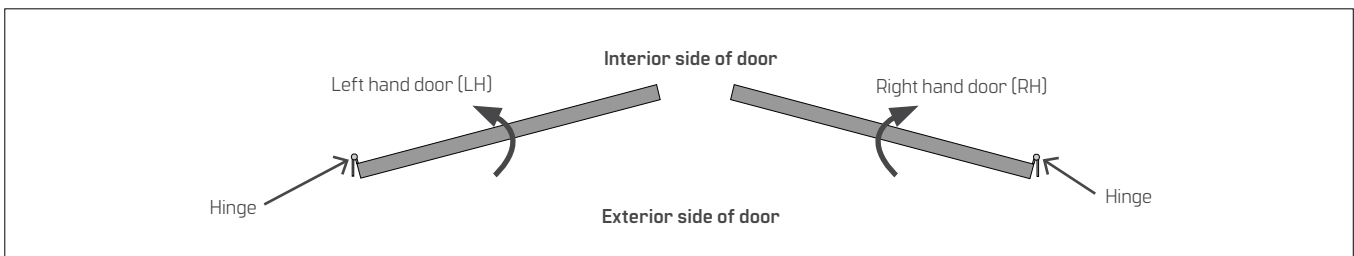
1.2 Tools recommended

Table 1

Drill bits:	#3 Phillips screwdriver
Metal: 7/32" drill bit; # 12-24 tap	1/2" or 13mm box wrench
Wood: 5/32" bit	10" adjustable wrench
DPK: 1/8"	3/16" hex key
Sex nuts: 3/8"	5mm hex key

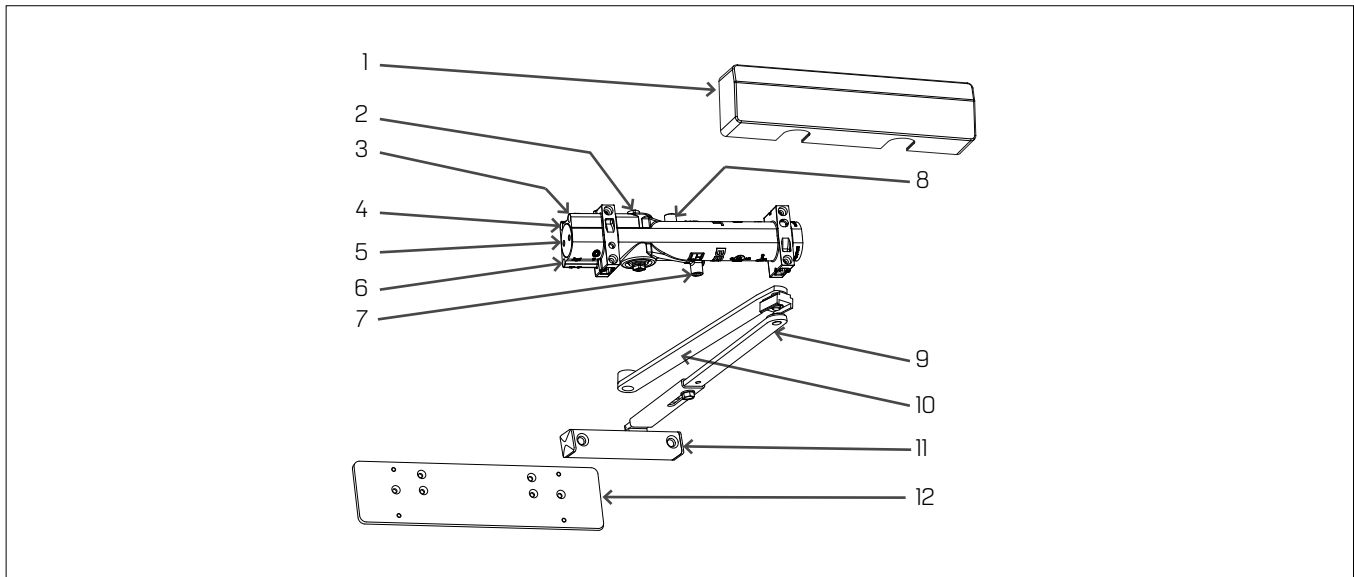
1.3 Handing the door

Fig.1



1.4 Surface closer components

Fig.2



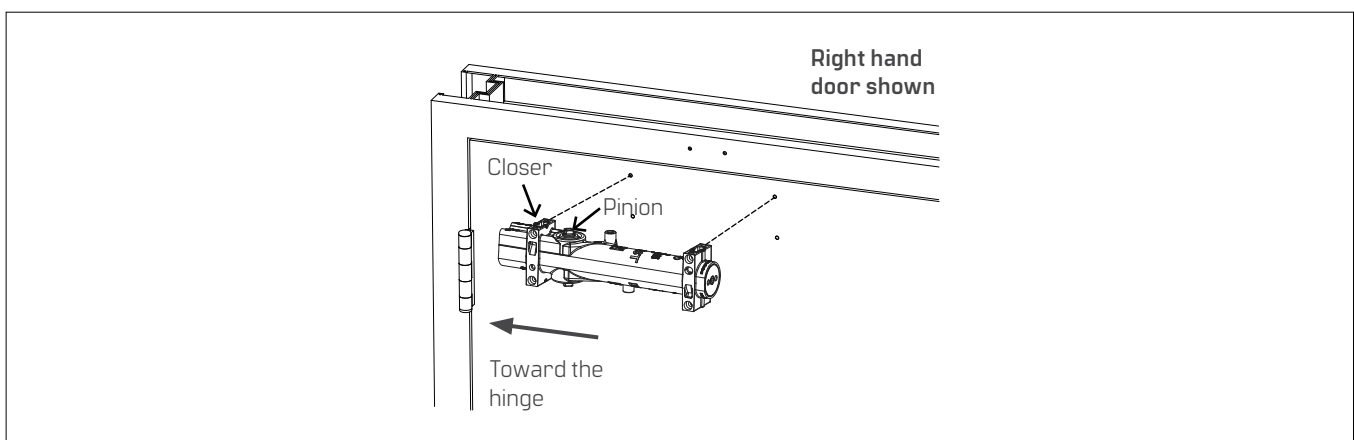
The surface closer is comprised of the following components.

- | | |
|-----------------------------------|--------------------------------|
| 1. Full cover (standard) | 7. Backcheck adjustment |
| 2. Pinion | 8. Advanced variable backcheck |
| 3. Delayed action adjustment | 9. Connecting arm |
| 4. Closing/sweep speed adjustment | 10. Main arm |
| 5. Closer body | 11. Damper assembly |
| 6. Latch speed adjustment | 12. Backplate (optional) |

2 Installation - regular mount

2.1 Installing the surface closer

Fig.3

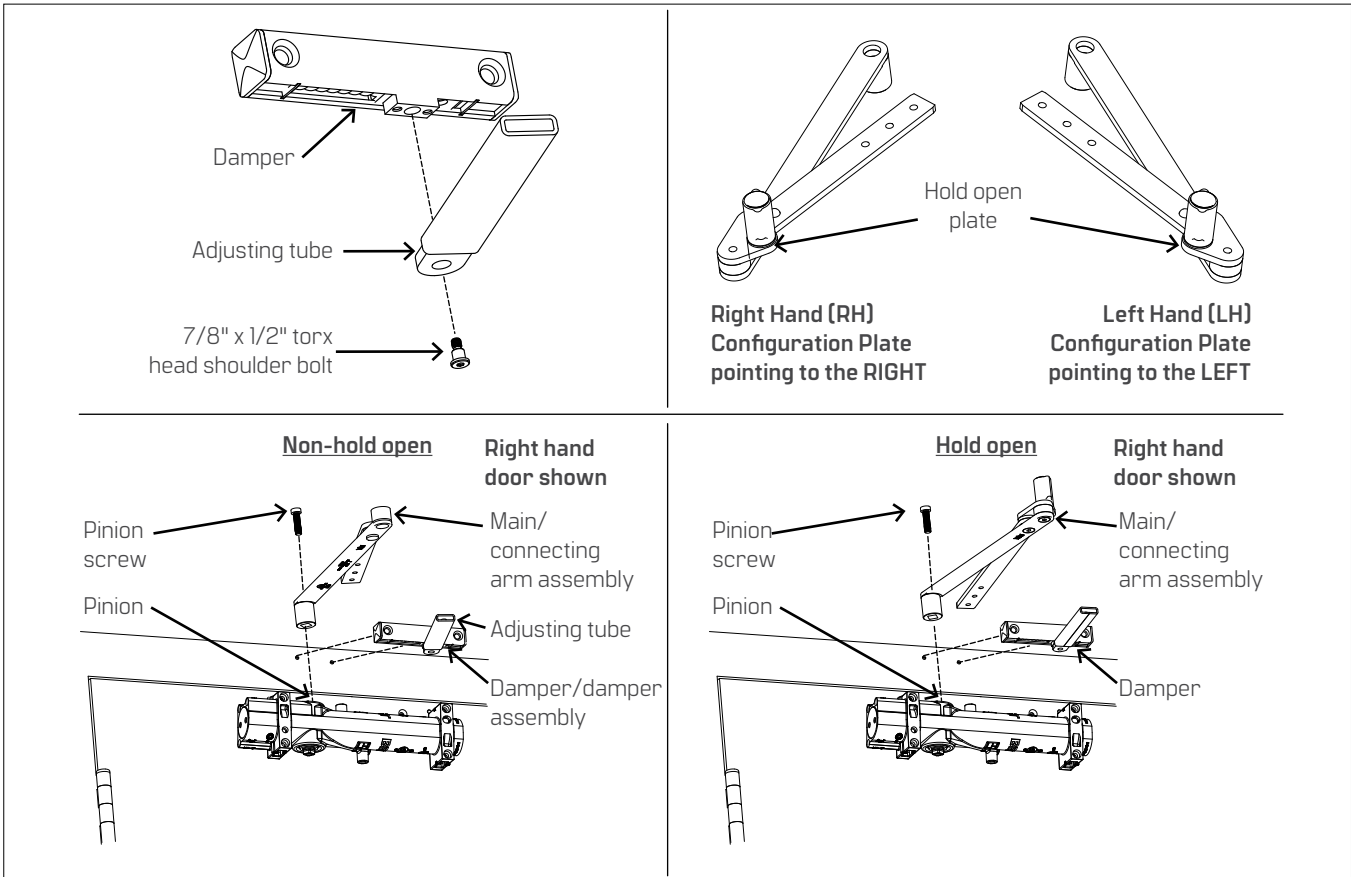


NOTE: Ensure pinion is oriented toward the hinge.

- 2.1.1 Secure closer body to door.
 - Use four # 1 2 Phillips flat head screws as required.

2.2 Securing damper assembly to frame

Fig.4



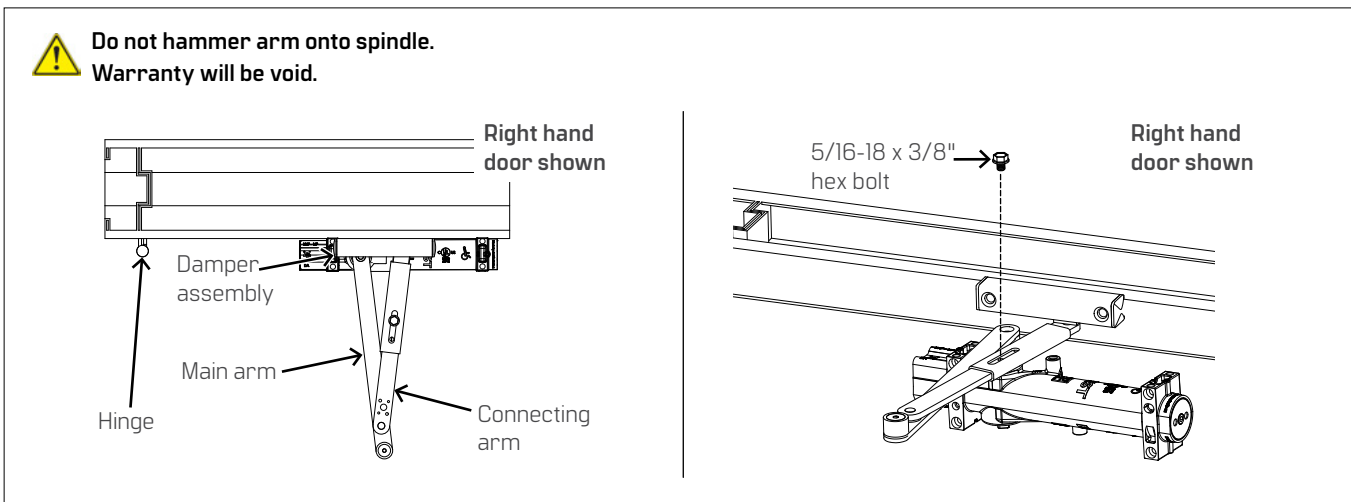
- 2.2.1 Secure adjusting tube to damper.
 - Use one 7/8" x 1/2" torx head shoulder bolt provided.
- 2.2.2 Secure damper assembly to frame.
 - Use two 5/16" x 2" flat head screws [#20 x 2" flat head wood screws] provided.
- 2.2.3 Secure main arm to operator pinion.
- 2.2.4 Use provided pinion screw [M8 x 30 socket head cap screw].

NOTE: To disassemble hold open plate:

- 2.2.5 Remove both screws from bottom of plate using a 3/16" hex key.
- 2.2.6 Keeping all washers in place, flip plate over to orient as per image above.
- 2.2.7 Re-secure plate with both screws.

2.3 Securing main arm to closer

Fig.5

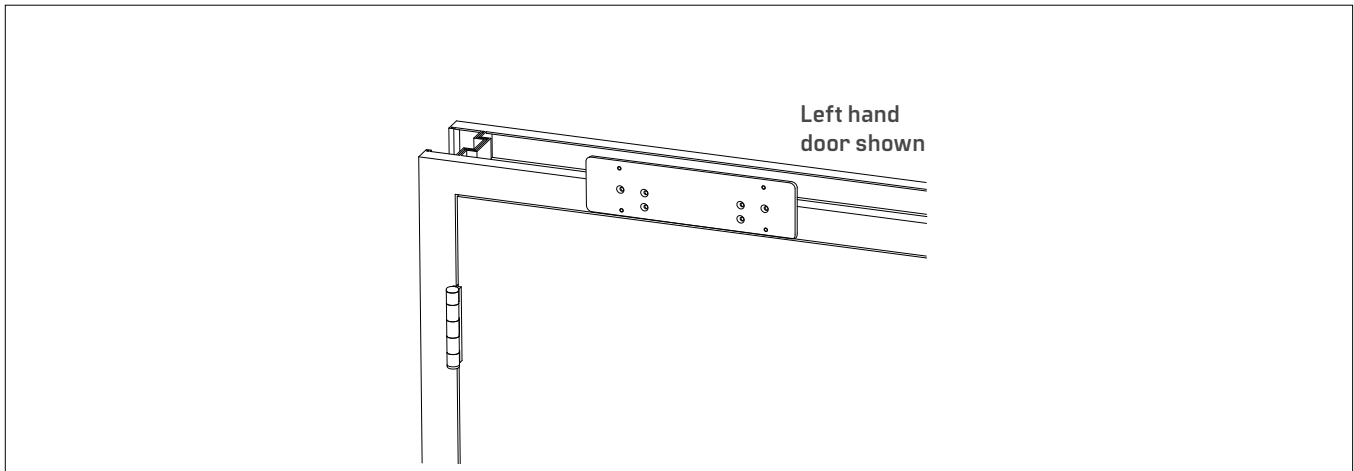


- 2.3.1 Slide end of connecting arm into end of damper assembly.
- 2.3.2 Secure connecting arm and damper assembly.
- 2.3.3 Use provided fastener [5/16-18 x 3/8" hex bolt].

3 Instructions - top jamb mount

3.1 Mounting backplate/top plate [BP 8 0]

Fig.6

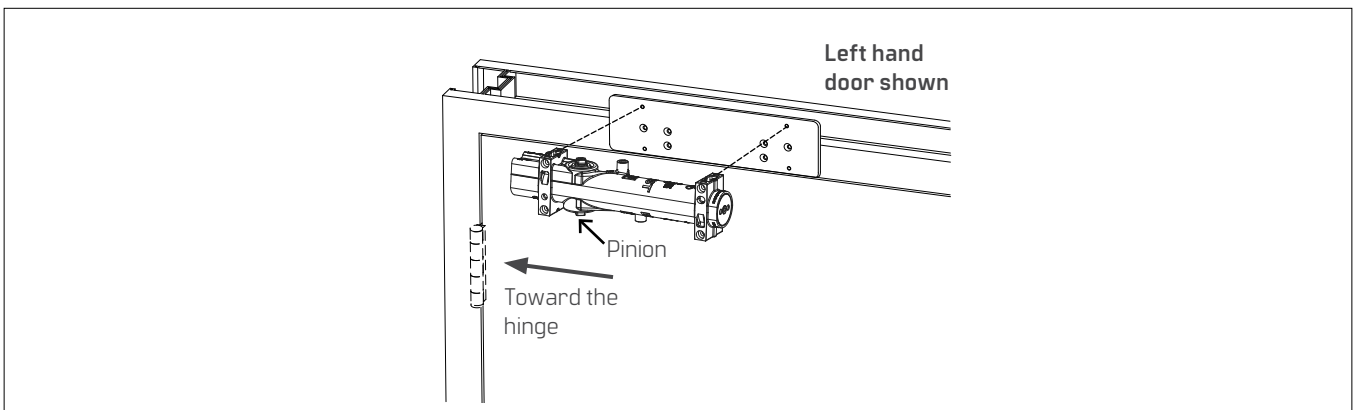


NOTE: Backplate is required for frames under 3" in height.

- 3.1.1 Secure plate to frame.
- Use four # 1 2 Phillips flat head screws as required.

3.2 Installing the surface closer

Fig.7

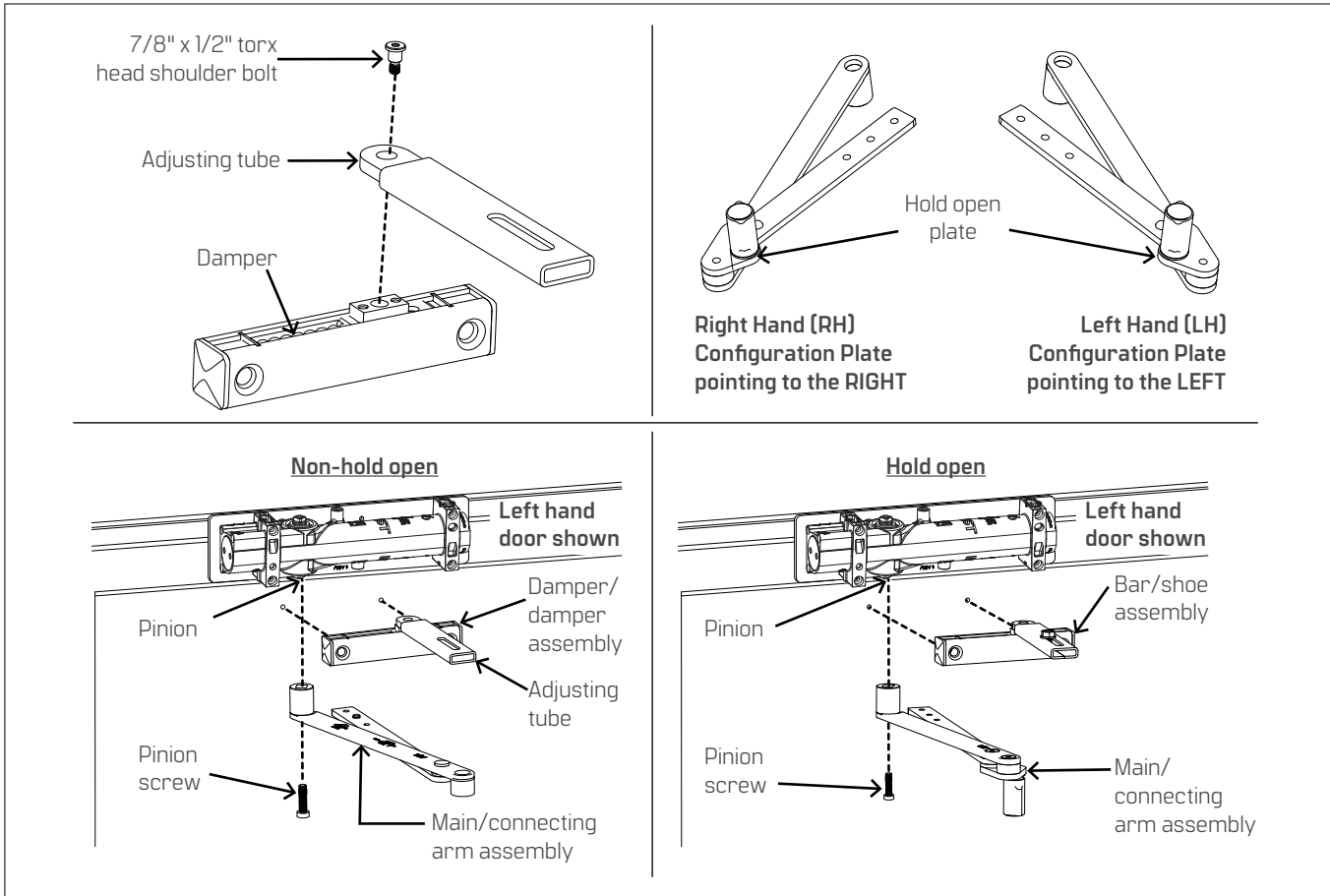


NOTE: Orient pinion toward the hinge.

- 3.2.1 Secure closer body to plate.
- Use four # 12-24 x 2" Phillips flat head screws provided with the plate itself.

3.3 Securing damper assembly to door

Fig.8



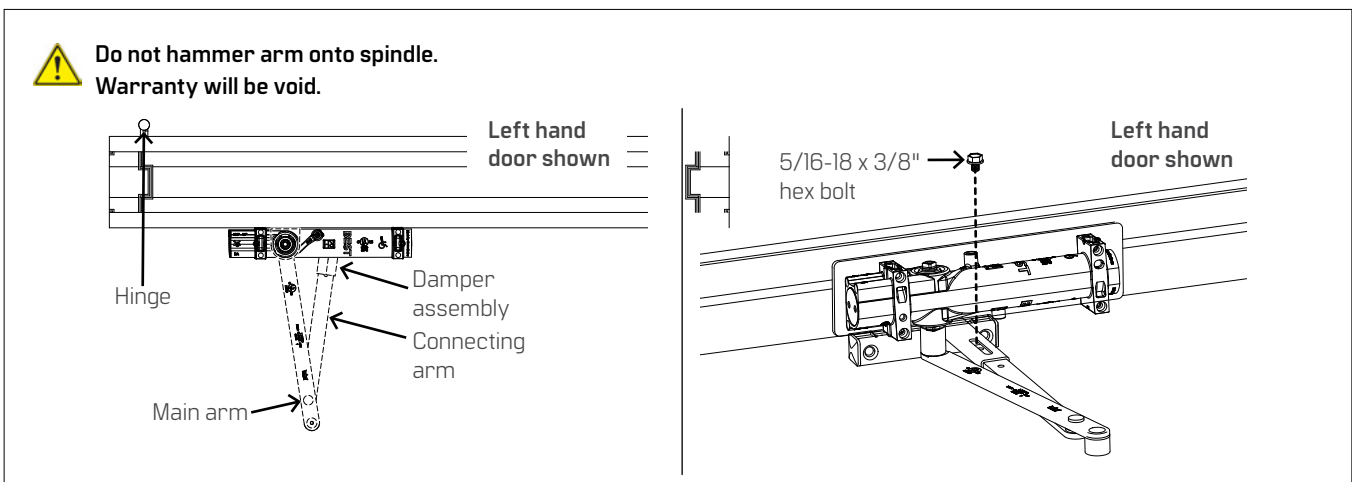
- 3.3.1 Secure adjusting tube to damper.
 - Use one 7/8" x 1/2" torx head shoulder bolt provided.
- 3.3.2 Secure damper assembly to door.
 - Use two 5/16" x 2" flat head screws [#20x2" flat head wood screws] provided.
- 3.3.3 Secure main arm to operator pinion.
 - Use the provided pinion screw [M8 x 30 socket head cap screw].

NOTE: To disassemble hold open plate:

- Remove both screws from bottom of plate using a 3/16" hex key.
- Keeping all washers in place, flip plate over to orient as per image above.
- Re-secure plate with both screws.

3.4 Securing main arm to closer



Fig.9






- 3.4.1 Slide end of connecting arm into end of damper assembly.
- 3.4.2 Secure connecting arm and bar/shoe assembly.

- 3.4.3 Use provided fastener [5/16-18x3/8" hex bolt].

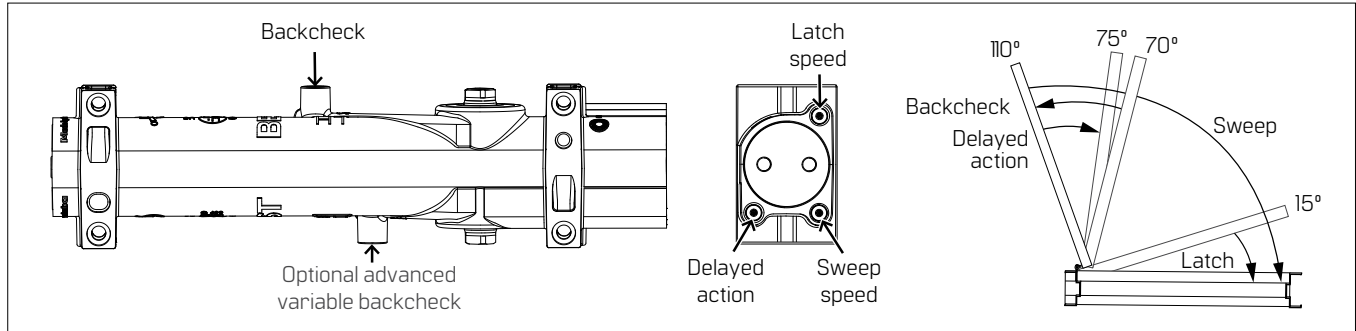
4 Adjustments

-  Confirm closer spring size prior to making any closing speed adjustments.
-  Do not back valve heads out beyond closer casting.

-  Maximum opening angle is 110°.
-  Door should close in 3 to 6 seconds from 90°.
-  Do not close valves completely.

4.1 Adjust closing speeds: sweep, latch, advanced variable backcheck, delayed action

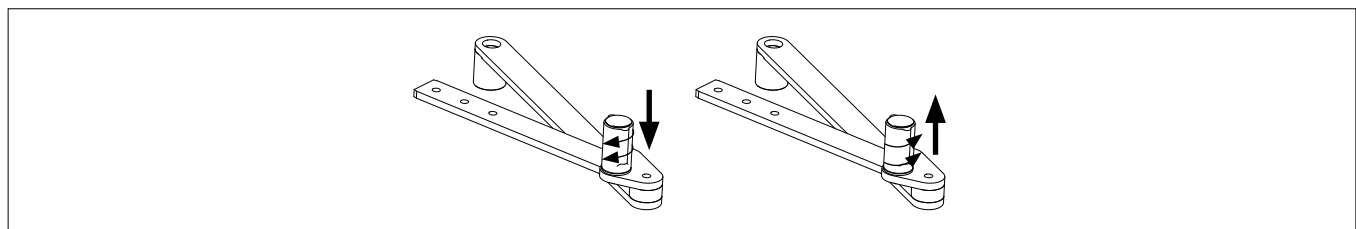
Fig. 1 0



- 4.1.1 Adjust **sweep speed** for the area from 110°-15°.
 - Increase sweep speed: Turn valve counter-clockwise.
 - Decrease sweep speed: Turn valve clockwise.
- 4.1.2 Adjust **latch speed** from 15°-0°.
 - Increase latch speed: Turn valve counter-clockwise.
 - Decrease latch speed: Turn valve clockwise.
- 4.1.3 Adjust **backcheck** for the area from 70°-110°.
 - Increase resistance: Turn valve clockwise.
 - Decrease resistance: Turn valve counter-clockwise.
- 4.1.4 Adjusting **advanced variable backcheck** will advance approximately 15° in the "ON" position. Shipped from factory fully "ON".
 - Turn OFF: Rotate counter-clockwise.
 - Turn ON: Rotate clockwise.
- 4.1.5 Adjust **delayed action** for the area from 110°-75°.
 - Increase delay: Turn valve clockwise.
 - Decrease delay: Turn valve counter-clockwise.

4.2 Adjust optional hold open

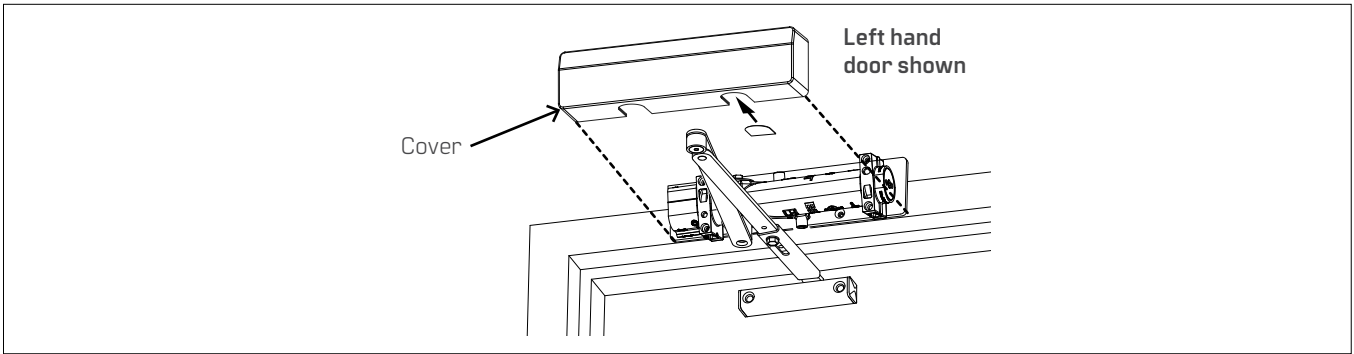
Fig. 1 1



- 4.2.1 Enabling or disabling hold open.
- 4.2.2 Twist hold open handle up or down to loosen or tighten, respectively, the hold open capacity.
- 4.2.3 Engaging or disengaging hold open.
- 4.2.4 Engaging hold open: push door open until hold open ball connects with detent in handle.
- 4.2.5 Disengaging hold open: pull door to pop hold open ball out of detent.

5 Install cover

Fig. 1 2



- 5.1.1 Place tab in cover slot, opposite main arm.
- 5.1.2 Snap cover over closer body.



For Online Instructions Visit:
<https://dhwsupport.dormakaba.com/hc/en-us>
For Assistance or Warranty Information:
Call 1-800-392-5209 or Visit
<https://dhwsupport.dormakaba.com/hc/en-us>