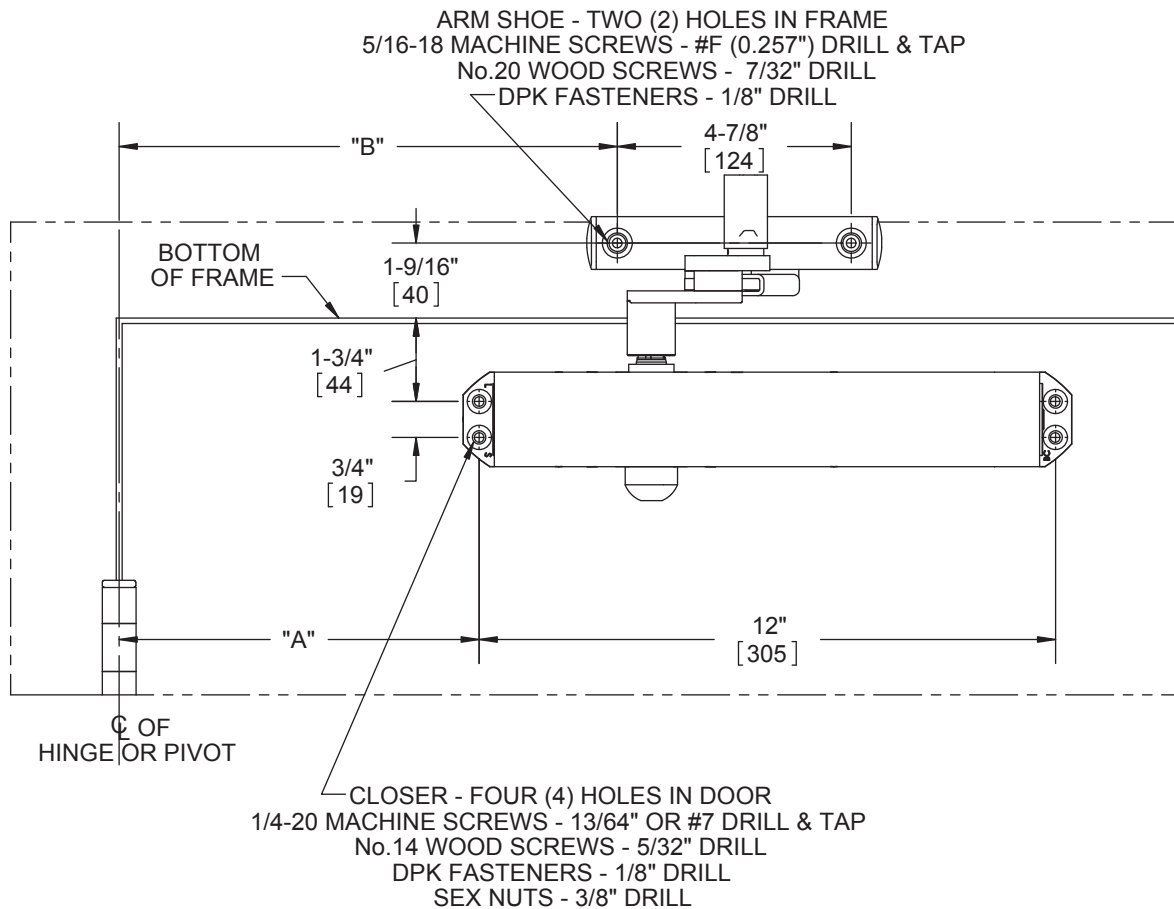


**Door Closer Models: HD7016 SISH (Spring Integra Stop)
Regular Installation Hold Open (Pull Side Mount)
Drilling Instructions**

For online instructions, assistance or warranty information:
Call 1-800-392-5209 or visit <https://dhwsupport.dormakaba.com/hc/en-us>

NOTES:

- 1) DO NOT SCALE THIS DRAWING
- 2) DIMENSIONS ARE IN INCHES / [MM]
- 3) RIGHT HAND DOOR IS SHOWN
- 4) CAUTION: SEX NUTS ARE REQUIRED FOR ATTACHMENT OF COMPONENTS TO UNREINFORCED DOORS AND TO WOOD OR PLASTIC FACE COMPOSITE TYPE FIRE DOORS, UNLESS AN ALTERNATIVE METHOD IS IDENTIFIED IN THE INDIVIDUAL DOOR MANUFACTURER'S LISTINGS.
- 5) DPK FASTENERS FOR STEEL DOOR & FRAME ONLY.



ANGLE OF HOLD OPEN	ANGLE OF CUSHION	DIMENSION "A" (CLOSER)	DIMENSION "B" (ARM SHOE)
85°	86° - 96°	$\frac{8-1/8"}{[206]}$	$\frac{11"}{[279]}$
90°	91° - 101°	$\frac{7-1/2"}{[191]}$	$\frac{10-3/8"}{[264]}$
100°	101° - 111°	$\frac{6-5/8"}{[168]}$	$\frac{9-1/2"}{[241]}$
110°	111° - 121°	$\frac{5-7/8"}{[149]}$	$\frac{8-3/4"}{[222]}$

