

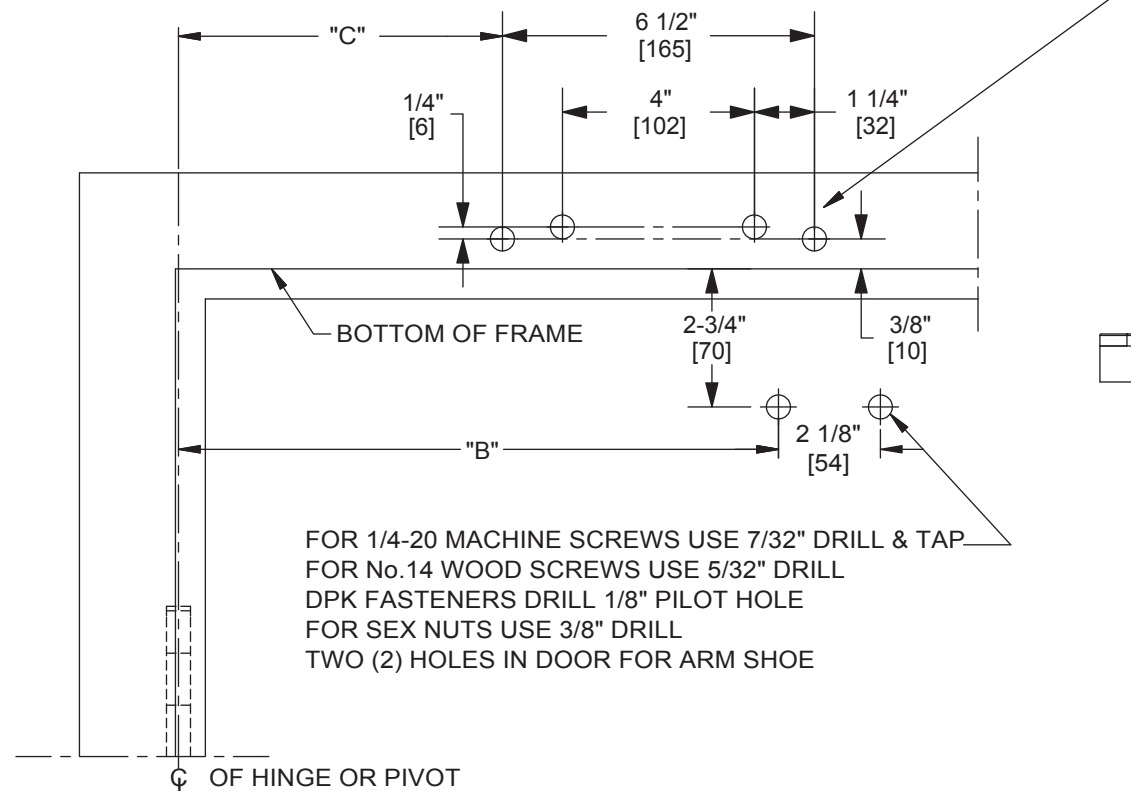
**Door Closer Models: SL6014, SL6036 ISJ, ISJH (Integra Stop Arm)
Top Jamb Installation (Push Side Mount) with Plates BP60, BP70, BP70FC
Drilling Instructions**

For online instructions, assistance or warranty information:
Call 1-800-392-5209 or visit <https://dhwsupport.dormakaba.com/hc/en-us>

NOTES:

1. DO NOT SCALE DRAWING.
2. DIMENSIONS ARE IN INCHES/(MM).
3. LEFT HAND DOOR SHOWN.
4. CAUTION: SEX NUTS ARE REQUIRED FOR ATTACHMENT OF COMPONENTS TO UNREINFORCED DOORS AND TO WOOD OR PLASTIC FACED COMPOSITE TYPE FIRE DOORS, UNLESS AN ALTERNATIVE METHOD IS IDENTIFIED IN THE INDIVIDUAL DOOR MANUFACTURER'S LISTINGS.
5. SEE CATALOG FOR REVEAL INFORMATION.
6. DPK FASTENERS FOR STEEL DOOR & FRAME ONLY.

FOR 1/4-20 MACHINE SCREWS USE 7/32" DRILL & TAP
FOR No.14 WOOD SCREWS USE 5/32" DRILL
DPK FASTENERS DRILL 1/8" PILOT HOLE
FOUR (4) HOLES IN FRAME FOR PLATE



FOR 1/4-20 MACHINE SCREWS USE 7/32" DRILL & TAP
FOR No.14 WOOD SCREWS USE 5/32" DRILL
DPK FASTENERS DRILL 1/8" PILOT HOLE
FOR SEX NUTS USE 3/8" DRILL
TWO (2) HOLES IN DOOR FOR ARM SHOE

DEGREE OF DEAD STOP	DIM. "B" ARM SHOE	DIM. "C" PLATE
85°	$\frac{12-7/8"}{(327)}$	$\frac{7-5/16"}{(186)}$
90°	$\frac{12-3/8"}{(314)}$	$\frac{6-9/16"}{(167)}$
95°	$\frac{12"}{(305)}$	$\frac{6-5/16"}{(160)}$
100°	$\frac{11-1/2"}{(292)}$	$\frac{6-1/16"}{(154)}$
105°	$\frac{11-1/4"}{(286)}$	$\frac{5-13/16"}{(148)}$
110°	$\frac{11"}{(279)}$	$\frac{5-9/16"}{(141)}$

